

Commons hit
by fire again
— see below

Chamber installs
new officers
see picture pg. 16

Buc wrestlers
defeat Bengals
— see page 13

Belleville Times

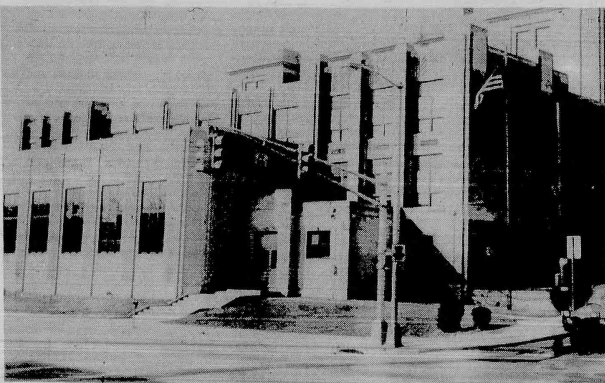
Serving Belleville Since 1909

35¢

81st Year No. 9

An Orehio Publication

Thursday, February 15, 1990



IT'S NOT BELLEVILLE JUNIOR HIGH ANYMORE - It hasn't been a junior high school since 1981. Now, the Middle School has evolved into "student oriented" curriculum to prepare the seventh and eighth graders for high school and life - another good reason to be proud of Belleville.

Middle School team teaching educates the whole child

From the outside it hasn't changed much over the years. Most people in town still call it the junior high. But don't let the exterior fool you. It may not be different on the outside, but Belleville Middle School sure is different on the inside.

For seventeen years the ancient structure at 279 Washington Ave. housed grades 7, 8 and 9. The facility was overcrowded, the faculty was overwhelmed. But in 1981, Belleville High School opened the

new wing, and the freshman class took its rightful place in a 4-year high school.

Moving out the ninth grade class opened the way for the Belleville Junior High School to become Belleville Middle School, a school with a distinctly middle school philosophy.

"As soon as the ninth graders got out, one thing was evident, there was less of a discipline problem," said B.M.S. Principal Mario DiMaggio. "The school was under the

total control of teachers and administration and provided more time to devote to teaching and working on the curriculum."

The building's student population peaked at 1525 in 1973, and was at about 1325 in 1981 before the ninth graders were moved to the high school. Presently about 570 students are enrolled at the school. The reduced student population reduced the need for teaching classes, several at a time, in the auditorium, and also freed teachers from hall duties. The free time was devoted to team teaching. Team teaching has been the biggest change in the school system since the 1981 split, DiMaggio said.

Belleville Middle School is like six schools under one roof. There are 6 teams, 3 of seventh and 3 of eighth. The seventh grade teams are comprised of 5 major subject teachers covering English, reading, social studies, math and science. The eighth grade teams are made up of only 4 majors. Reading is only given to those 8th grade students who have a need. The students are assigned to a team thereby allowing the major subject teachers to work as one unified group, educating the whole child.

The teachers meet as a team (continued on page 5)

County leader takes over Democratic Committee

By Alfred Cook

Philip Keegan may be getting up each morning the same time he always did, but his weekly schedule will be changing. By 7 a.m. he'll be having his usual breakfast in his Maplewood home while looking out at his backyard and spruce deck, and by 7:30 he will join the other commuters along Route 24 to the Garden State Parkway and Turnpike heading for Trenton where he'll be seeing office holders, political leaders, members of the financial community, consultants, researchers, field coordinators and campaign managers.

Now, approaching 48, and with all those years closely tied to the Democratic Party, Keegan may be staring at a major challenge or a ghastly nightmare. Recently Governor Jim Florio appointed Keegan as the new Chairman of the State Democratic Committee, for years awash in debt and tottering.

When Ray Durkin took over 4 years earlier the party was a half-million in debt, but now after winning the governor's race and in control of both houses, the leadership finds itself a million ahead



Philip Keegan

after paying off that debt.

"There's almost no comparison," Keegan said, "we have a sitting governor and money in the bank. You have a different perspective."

But he's got more going for him than that; he comes to Democratic

(continued on page 9)

PBA gala ball tomorrow

Detective Tony Wieners, Police Benevolent Association Local 28 President, announced that two 25-year Belleville police veterans and two private citizens will be honored at the PBA Gala Ball next month.

The private citizens to be honored with lifetime honorary silver PBA cards are Belleville Township Attorney Frank J. Cozzarelli and Yoshio Sawamura.

Captain Albert Koelsch and Joseph Oese, both 25-year veterans of

the township force will each receive lifetime honorary silver PBA cards in recognition of their service and dedication.

The gala ball will be held at Nanina's In The Park, February 16, at 7 p.m. with a cocktail hour, dinner, music and open bar. Formal attire is optional. Tickets are \$30 per person and can be obtained from Captains Salmon or Escott, or Detective Wieners.

Commissioners pass nonbinding resolution

Township commissioners were again unable to act on three resolutions transferring appropriations within the 1989 budget. Only three commissioners were present at Tuesday's meeting, four votes are necessary to pass the appropriations transfers. The commissioners set Tuesday, Feb. 20 at 7 p.m. for a special meeting to address the appropriations.

The commissioners did pass a non binding resolution establishing a policy of limiting job titles to those already existing, and to further restrict pay raises for employees to those negotiated under contract or granted through civil service increment policies.

"Actions speak louder than words," Commissioner Vincent Frantantoni said, before he voted in favor of the nonbinding resolution.

Township attorney Frank Cozzarelli explained that the board could use the resolution as policy, but they could not interfere with the hiring practices of other departments. "You are responsible to the people everyday of your political career," he said.

Cozzarelli said, the responsibility "places a burden on you as well as your power. There is no legal effect of the resolution." Each commissioner is charged under the law to make the determinations as to the best running of his department.

The commissioners approved the 1990 contract for services with the Community Mental Health Services in the amount of \$62,848.48. The commissioners had disputed the 1989 bill of \$63,436 and agreed at their December 28 meeting to pay only \$59,291.02 for the 1989 services.

An ordinance on first reading to change titles in the public works department will wait until Commissioner Angelo C. Risoli provides a written report regarding the department's present titles, salaries and overtime.

Risoli said his ordinance would cut back on titles in the Public

Works Department by combining four present titles to two, the position of assistant supervisor for water/sewer, and senior sewer/water repairer.

The Public Works Department presently has 40 employees, Risoli said. Two employees are scheduled to retire, one in March and one in April. Risoli said the department was top-heavy with titles. He said there were 30 titles in a 40 person

department. Now, with the title changes, Risoli said the department will be set up where the right people would do the right job.

Township commissioners approved a resolution to retain Joseph J. Rygliecki as Special Counsel for the Township at the rate of \$150 per hour to a maximum of \$20,000 in the case of Mary Lou Hood and Annamae O'Connell vs. the township.

Bank heist suspect holds up two more

By Karen A. Lynch

Local and federal authorities are searching for an Hispanic male who robbed Peoples Bank at 1422 Broad St., Bloomfield, late Friday afternoon, making off with some \$13,000.

Police believe the same man is responsible for a \$4,000 heist at Tri-City Peoples Bank at Bloomfield and Belmont avenues, Belleville, Jan. 23.

He also made an unsuccessful robbery attempt at Carteret Savings Bank at Bloomfield Avenue and 11th Street, Newark, Feb. 9, they said.

Bloomfield officers responded to a call at 3:55 p.m., after the suspect handed a note to teller Mildred Costa, 23, saying, "This is my identification."

The man, who was alone, then took off through the front door and fled through the supermarket parking lot across the street, police said.

No weapon was displayed during the incident, and no injuries occurred, according to reports.

Representatives from the Federal Bureau of Investigation subsequently sealed the building while they took statements from a half-dozen employees present during the robbery.

Detectives declined to disclose the contents of the note, saying they were similar to those of a written message used in the Belleville robbery.



State Police composite drawing of robbery suspect

An article about that incident in a Belleville weekly newspaper reported the suspect's note implied he had a gun.

The FBI took the note used in Friday's incident and film from the bank's half-dozen security cameras, police said.

The suspect is further described as 20 to 30 years old, of medium build and 5 feet 10 to 11 inches tall. He had a thick black moustache and was "scruffy," needing a shave, police said.

He was wearing a blue waist-length windbreaker and a red and yellow baseball hat. Neither article of clothing was decorated with writing, according to reports.



BURNED TWICE — A midnight fire roared through vacant condominiums which were in the early stages of renovation needed because of a fire last June.

Thursday, February 15, 1990

An Orechio Publication

Belleville POLICE BEAT

Two private citizens used their mobile phones to help catch purse snatchers on Linden Ave. Feb. 12. A witness in a car saw an elderly woman walking along Greylock Parkway near Floyd St. have her purse stolen. The witness used a mobile phone to notify police, then began a foot chase of the suspect. The witness lost the suspect, but another witness saw the suspect jump into a 1981 beige Chevy where an accomplice was waiting. The second witness followed the suspects until he could block their car on Linden Ave. Police arrested a 17-year-old juvenile, and John Gerena, 24, both of Newark, and charged them both with robbery. Bail for Gerena was set at \$30,000.

Two Belleville men were arrested and charged with drinking in public Feb. 8 on the railroad tracks near Little St. Keith Anderson, 38 and William Faulkner, 29, were told by police officers that they

Dejessie a Marine

Marine Pfc. Jeffrey A. Dejessie, son of Carol A. Nucci of Mt. Prospect Ave., has been meritoriously promoted to his present rank upon graduation from recruit training at Marine Corps Recruit Depot, Parris Island, S.C.

Dejessie received the early promotion for his superior performance during all phases of the 13-week training cycle, which emphasized physical conditioning, self-discipline and teamwork.

He is a 1989 graduate of Belleville High School.

could not drink in public. The two then became abusive to the officers, who then arrested the pair.

A 1986 Honda Acorad was reported stolen from Watchung Ave. Feb. 8.

A Little St. resident reported Feb. 8 that his company van which was parked in his driveway was broken into during the night and about \$1300 worth of tools were taken.

A business reported a break-in on Main St. Feb. 7. The victim reported that a door which connected two buildings had been removed and that the site may have been used as a hangout. The victim reported that nothing appeared to have been taken.

A 1983 Chevy Cavalier was reported stolen from in front of the house on Mt. Prospect Ave. Feb. 7 from Mt. Prospect residents.

Two Newark residents were charged with shoplifting Feb. 7 at a Washington Ave. supermarket. Venus Hannah, 26 and Cordesa Adams, 33, reportedly tried to steal \$42.61 worth of cigarettes. Hannah was also charged with giving a false name to police.

A 1980 Pontiac Trans Am was reported stolen from Malone Ave. Feb. 5.

A 1983 GMC straight truck was reported stolen from the Grand Union shopping plaza while the driver was making a delivery Feb. 6. The truck reportedly contained about 150 cases of assorted cookies. Neither the vehicle nor the cookies have been recovered.

Gregory Crawford, 18, of Lyndhurst, was charged with burglary of a Washington Ave. business Feb. 5. An employee who found a door had been forced open turned over to police a black down jacket, 2 packs of cigarettes and a lighter believed to have been left behind by the burglar. Crawford was arrested following an investigation by Belleville police.



SURPRISE, WE'LL MISS YOU—Ann Mattern, retiring after thirteen years in the tax office, Mattern (second from right) with family members, was the center of attention at her surprise retirement party attended by 43 town hall workers.

Town Hall employees bid Mattern farewell

After thirteen years as the patient friendly woman who explains tax assessments on the phone and in person, Ann Mattern is retiring to Orlando, Fla. to be with her two daughters and twin granddaughters.

Mattern said she has enjoyed working in the tax assessor's office. "The decision to go down (to Orlando) was hard," she said, "because I liked the job and meeting people."

It became obvious to Mattern how well she was liked when her 43 co-workers from Town Hall threw

her a surprise retirement party Feb. 7. "I was so thrilled, I felt touched," she said.

Mattern has lived in Belleville for 37 years. She raised her three children, Joseph, Rosemary and Helen Ann, here in town, and they are all BHS graduates.

"I grew up in the Forest Hill section of North Newark, it was beautiful," Mattern said. "After all this time, I felt like I was just visiting Belleville."

Belleville is better off for Ann Mattern's visit. Come back and visit us again, Ann, we'll all miss you.

Golden Comments

By Jim Golden

We respectfully refer our Belleville School Board trustees to the front page article of the January 25, 1990 issue of the Nutley Sun by Alfred Cook captioned Asbestos Removal Problems: Scientists see problems in needless removal. We also refer to the Time magazine Jan. 29th (page 65) issue "An Overblown Asbestos Scare? The dangers are minimal in most buildings, says a new study."

In view of Belleville taxpayer's great concern over the Board of Education mounting budgets and the projected anticipated planned costs of asbestos removal in our local schools, we strongly urge that serious study be given this matter since it reflects possible solution to a most perplexing and expensive matter.

According to the five European and American authors the growing number of asbestos removing firms following "must be reduced because of these and other reasons... Using analytical techniques that involve electronic microscopes, researchers have found that in schools and other buildings containing asbestos, concentrations of that substance, "are comparable to levels in outdoor air."

In the Jan. 19 issue of the Journal Science, the asbestos "crisis" is grossly exaggerated, and the public would do well to save its dread and its dollars. Says Brooke Mossman, a cell biologist at the University of Vermont College of Medicine and the lead author of the report: "Low-level exposure is not a threat to human health. The scare is unprecedented, and the amount spent on asbestos removal is ridiculous." In fact, says Mossman and her co-authors, removal often puts more asbestos into the air than was there in the first place.

As for the general public, says Mossman, the level of exposure even in buildings with flaking asbestos is no more than 1% of the level deemed safe for workers. The researchers note that some sorts of asbestos are far more dangerous than others and that the safest type is used almost exclusively in U.S. buildings.

The risk of dying from smoking, drowning, airplane crashes or even playing high school football is 100 to 1,000 times as great as the risk of dying from asbestos exposure in buildings. "We have known this for two years," complains Mossman, "yet I still pick up a newspaper that says it's a problem."

The public's fears have been fueled in part by the Environmental Protection Agency (EPA) regulations that require school officials to inspect buildings for flaking asbestos every six months, notifying parents if it is found and make every effort to contain or remove the material. "The law implies that they must do something about it, and that is not always right," says Mossman.

Government officials acknowledge that the scientists have a point. Says Charles Elkins, director of the EPA's office of toxic substances: "I would agree that in many cases removal is the wrong thing to do. It is a mistake for people to overreact. But it is also a mistake to say that asbestos is not a problem." In some situations, he says, simply blocking off an area or coating the damaged material with chemical sealants may do the trick.

The SCIENCE authors do not oppose all asbestos removal, but they contend that it should be done only when the level and type of airborne particles are clearly hazardous. Given the cost of asbestos removal — \$20 or more per sq. ft., or 100 times the price of installing it — that argument should be a weighty one for policymakers.

With scientists seeing risks in needless asbestos removal and the Science report that unlike the amphibole form of asbestos, the chrysotile type is less dangerous because its fibers are curly and ball up so they are more easily rejected by the lungs and that most of the asbestos found in the Nutley schools is the chrysotile type, which the report concludes that all available data says is "not a health risk"...we strongly urge that our Belleville school trustees carefully study and review this development, before any firm commitment is made regarding further asbestos removal in our local schools.

Fire Dept. Doo Wopp March 3

The Belleville Fire Dept. F.M.B.A. 29 will be hosting "The East Coast Doo Wopp Spectacular" March 3 at the South Mountain Arena in West Orange.

Appearing at this show will be The Dugrees, Larry Chance & The Earls, Lee Andrews & The Hearts, The Tokens, The Chimes, The Crystals, The Regents, The Cleftons, Earl Lewis & The Channels, Frankie Lyndon's Teenagers, Jimmy Miller & Illusions and an acapella feature starring Magic Moments. The proceeds from this event will be donated to the St. Barnabas Hospital Pediatric Burn Unit.

Tickets are \$22.50 for general admission and \$25 for reserve seating. For tickets call U.S.A. Productions, Inc. at (201) 686-6030 or call TicketMasters at (201) 507-8900.

It's time for an insurance check-up
Are you comfortable with your current coverage?

- Homeowner's Insurance
- Auto Protection
- Condo Insurance
- Life Insurance
- Renter's Insurance

TROISE INSURANCE AGENCY
"WHERE QUALITY COVERAGE COUNTS"
172 Washington Avenue, Belleville
Mon. - Fri. 9 A.M. - 5:30 P.M. • Sat. 9 A.M. - 12:30 P.M.
759-4100

Member Belleville Chapter of Consumers

WATNY PUBLIC

IRA tax-deferred growth — still a great way to secure your future.

LIMITED TIME ONLY—3 YEAR CD
8.35%
ANNUAL YIELD
8.02%
ANNUAL RATE

ROLL-OVER TO PROVIDENT

Now—
more investment choices for faster growth.

Annual contributions to your IRA for 1989 are acceptable until April 15th. Rolling over your IRA into a Provident high yield investment can be done at any time. Remember—early contributions or rollover increase your tax-deferred earnings.

Come in or call toll-free in New Jersey 1-800-624-2806

Our 151st Year

THE PROVIDENT
SAVINGS BANK
Offices throughout New Jersey • Member FDIC

...to simplify your financial life.

Rockport Headquarters.

Come in now and try on a pair of Rockports, the original walking shoe. We've got a wide selection of styles (for women with the unique comfort and support features that have made Rockports the most popular walking shoes in America.

Rockport

PRESIDENTS' SALE
February 14th to 19th

\$10.00 OFF reg. price **All Rockports** (in stock)

Plaza Bootery
"Where Fit Is Always Guaranteed"
483 Franklin Avenue • Nutley, N.J. • 667-8964
SHOE REPAIR DONE ON PREMISES
FREE PARKING — MAJOR CREDIT CARDS HONORED

Pharmacy Footnotes

GOING FOR THE BURN
Heartburn is characterized by burning chest pain that can mimic the pain of heart disease. Usually a result of overeating, heartburn occurs when the ring-shaped muscle (esophageal sphincter) at the entrance of the stomach relaxes inappropriately or is simply weak. As a result, stomach acid backs up into the esophagus (food tube) and causes the burning sensation. These attacks may be prevented by cutting back on the consumption of tea, coffee, chocolate, alcohol, and cigarettes, all of which relax the esophageal sphincter. When medicine does strike, over-the-counter antacids will help by neutralizing stomach acid. A chronic condition may require prescription medications which suppress acid secretion.

We maintain a full selection of old standbys, as well as newly approved medications. For all your prescription needs come to ROSSMORE PHARMACY, 338 Washington Ave., 759-1968, 759-1956. We have a full selection of greeting cards, cosmetics, toiletries, gifts and Russell Stover candies for Valentine's Day and other occasions. Open: 9am - 10pm daily, 9am - 9pm Sundays.

HINT: The USFDA recently approved the prescription drug omeprazole for severe acid-related disorders, which shuts down stomach acid production.

Scholarship for Parmenter

Marc Parmenter of Belleville has been awarded \$4,800 by the Berkeley Alumni Association



Marc Parmenter

Scholarship Committee to offset tuition costs to pursue a 18-month business administration program. Parmenter is presently enrolled in the Cooperative Marketing program and was recently awarded a medal for placing 15th in the Food Marketing event at the Northern Regional DECA conference held at Bergen Community College on Jan. 18.

"Our congratulations go to Marc, for this outstanding accomplishment and we wish him much success in the future," said Mr. Musmano, supervisor of the business department at Belleville High School.

Belleville High School News

Pedalino in all-state band

By Mark Tonelli

Julienne Pedalino, a senior at Belleville High School, has auditioned for and been selected to perform with the New Jersey All-State Symphonic Band.

Out of approximately 100 clarinetists auditioning, Julienne was placed as twelfth in the state. She has accomplished this goal



Julienne Pedalino

after just recently performing in her fifth North Jersey Regional Symphonic Band concert, in which she previously has been concert mistress and primary soloist.

Under the direction of Jill Van Syckle of Morristown High School, the band performed, among other pieces, selections from Andrew Lloyd Weber's "Phantom of the Opera," and "Rifle Regiment March" by John Philip Sousa. The concert was held at West Essex High School in North Caldwell on Jan. 28.

Julienne has been playing clarinet for 10 years and has been studying privately for four years with the well-known clarinetist William Shadel. She has performed in the musicals "Chicago" and "Oliver" and the Stevens Institute of Technology and at Hackensack High School, and was selected to attend the New Jersey Governor's

club. Steve, who is looking forward to studying voice privately with William Semper of Verona, is also interested in the industrial arts program at the high school, especially auto mechanics and wood shop.

Some of the choral selections on the program of this year's Region I Chorus were Undine Moore's arrangement of the lively negro spiritual "Daniel, Daniel, Servant of the Lord," also a beautiful arrangement of the American folksong "Shenandoah," Randall Thompson's choral setting of Robert Frost's poem "The Road Not Taken," and a group of five of Alice Wilder's lighthearted "Lullabies and Nightongs," arranged by Donald Lang.

The chorus shared the program with the Region I Orchestra and joined forces in Handel's magnificent coronation anthem, "Zadok the Priest."

The three students are grateful to their choral director, Dr. Thomas Finetti, for the extra time and hard work in preparing them for their auditions and performance. It was through his participation in the New Jersey School Music Association and the Music Educators National Conference that made the student's auditions possible.

Three sing in state chorus

Three Belleville High School students sang with 260 other selected students from the North Jersey Region I Chorus in a concert last Sunday at Morris Knolls High School in Denville. The three students, who auditioned for and were selected to perform with the North Jersey Region I Chorus, are seniors Janice Galang and Mark Tonelli, and junior Steve Malato.

A member of the National Honor Society, Janice Galang is a very active music student who plays clarinet in the high school's symphonic band, tenor saxophone in the jazz band, is captain of the color guard, and sings alto in the mixed chorus and show choir. She plans to attend the University of Tampa.

A talented guitarist, Mark Tonelli participates in the high school marching band, jazz band, mixed chorus, show choir, and the glee club. He has been actively involved in sports programs for the past four years as a member of the soccer, track, and tennis teams. Mark plans to major in guitar and jazz studies and has applied to several colleges in the metropolitan area.

Steve Malato's enjoyment of singing is apparent in his dedication to the high school's choral program as a member of the mixed chorus, show choir, and the glee

Concern for foreign language students

Linda Albanese and Jules Palmieri of Belleville High School's Foreign Language Department spent Jan. 8 at the RCSU-C. The RCSU-C stands for the Central Jersey Regional Curriculum Services Unit. The purpose of Albanese and Palmieri's visit to the unit was to participate in a six-hour training program which leads to certification as an assessor of foreign language speakers striving to obtain a high school diploma.

New Jersey now is home to over 40,000 students whose primary language is other than English. Foreign language students entering New Jersey schools in the 11th and 12th grades would find it almost impossible to pass the State's HSPT or High School Proficiency Test.

New Jersey, being sensitive to the needs of its minorities and newly arrived residents provides for the SRA or Special Review Asses-

ment in the native language.

The SRA permits school districts to evaluate students on skills in their native tongue. While students who are struggling to learn English may prove their right to a high school diploma by means of the SRA, these students must still pass the rigorous Maculatis test which assesses their knowledge of English.

New Jersey is unique in the nation in its desire and capability of providing assessment alternatives to students with limited English proficiency. The State's example will soon be followed by other states who understand the validity of the SRA in the foreign language.

Albanese and Palmieri are proud to have participated in the training program and of their ability to join the ranks of New Jersey's other 270 qualified assessors of students with limited English proficiency.



Foreign Language Teachers — Linda Albanese and Jules Palmieri, who attended the SRA workshop, will now be able to assess foreign language students for placement.



GOVERNOR'S TEACHER RECOGNITION PROGRAM WINNERS - Here are three of the nine teachers from Belleville selected by their peers for the governor's program: MaryLou Mele of School 4, Frank Ciccone of the Middle School, and Linda Fochesato of School 8.

Winter Clearance Sale

Starting February 15th

20-40% OFF

Jackets, Shirts, Thermals, Vests
Gloves, Sweaters, Quilted Flannels

(All Sizes Available)

CLOSEOUT

Lee - Levi Jeans \$7.50
(Broken Sizes) Pair

Atlantic Uniform Co.

444 Washington Ave.

Belleville • 751-1242

Open 9 am - 5:30 pm

Mon. & Fri. 9 am - 7:30 pm

Quit smoking.

American Heart Association

N.J.'s Premier Oldies Dance Club & Restaurant

Every Wednesday

"Ladies Nite"

- Free Admission ★ 1 Drinks
- Free Gifts & Prizes All Night

TONIGHT

Thursday, Feb. 15

Live Entertainment by

Remember When

Every Friday

Dance Party

Come Hooola Hoop, Twist

& Limbo to the Sounds of

D.J. Sal Boy and our

Professional Hop Dancers

Saturday, Feb. 17

Live Entertainment by

The Marvellettes

Tuesday, Feb. 20

Acappella Night

Featuring the Sounds of

The Delmonicos

Thursday, Feb. 22

Live Entertainment by

The Thunderbirds

Coming Attractions

Saturday, Feb. 24

Larry Chance

& The Earls

Thursday, March 1

The Happenings

Saturday, March 3

Vito Balsamo's Group

(formerly of the Salutations)

Essex County's Best "Afterwork Happy Hour"

COMP. BUFFET

Tues.-Fri.
4-7 P.M.

NO COVER
ALL DRINKS \$1⁰⁰ OFF

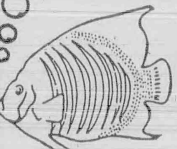
Call Our Entertainment Hotline 429-0076

Private Parties Available • Visit Our Oldies Giftshop

Open Tues. - Fri. 4 pm - 2 am • Sat. 7 pm - 2 am

6-12 Willow St., Bloomfield • 748-1331

nutley
pet
center



406 MAIN ST., BELLEVILLE
(ACROSS FROM K-MART) 751-1221

PRESIDENT'S DAY

GIANT 1 FISH SALE

BUY 1ST FISH AT REGULAR PRICE, GET

Second Fish For Only 1¢

(Selected Fish Only)

SALE FRI • SAT • SUN • MON FEBRUARY 16-17-18-19



SALE!
BABY PARAKEETS



FANCY
REG. \$19.99

BLUE
REG. \$17.99

GREEN
REG. \$16.99

NOW \$14.99

NOW \$12.99

NOW \$12.99

OUR OPINION

Yes, for sludge incineration

One of the hefty increases in the municipal operations budget in 1990 will be mandated by an outside agency, Passaic Valley Sewerage Commission (PVSC).

PVSC serves as a disposal agency for the sludge generated by 35 municipalities in Essex, Bergen, Hudson and Passaic Counties. That is a lot of manure management, so to speak.

As with the disposal of trash from garbage cans, so as with the disposal of solid waste from the sewers: stringent governmental regulations have made it increasingly more difficult to get rid of the stuff at a reasonable cost.

PVSC plans to build a sludge incinerator on its Newark property. The state-of-the-art incinerator would present no health risk, and it would be cheaper by far than alternative proposals.

Already, activist environmentalist groups are attempting to slow down and perhaps delay the PVSC building, beyond the March 17, 1991, cutoff date for ocean dumping — the traditional method of unloading the treated solid waste.

PVSC should proceed in its building plans as quickly as possible, as incineration of solid waste will be cheaper for taxpayers. As for environmentalist suggestions to use the sludge for compost, they have that option now in composting their solid waste, on a smaller scale of course and with proper permits from the local health department and with the forbearance of the neighbors.

For those who expect to be around in 2015

In the year 2015, when many in the baby boom generations begin to retire, pay-as-you-go financing of Social Security benefits will require high taxes on employees and employers.

In 1983, in an effort to head off this heavy taxation on the younger generations in and about 2015, a special federal commission proposed increasing the payroll tax immediately, thereby forcing future retirees of the baby boom generation to finance their benefits in advance.

This concept seemed fair. Unfortunately, the heavy Social Security taxes now have not been placed into a surplus for circa 2015 use by retirees. Rather, the Reagan Administration and the Bush Administration have been applying the sizeable (multibillions) in Social Security surplus accounts to cover over a portion of the annual federal deficit — the federal deficit that has been caused by too much spending by Congress (often with the reluctant approval of Reagan and Bush).

Along comes Senator Daniel Patrick Moynihan, who used to be a courageous voice for new thinking among liberals, with a proposal to slash the Social Security payroll tax from 7.65 percent to 6.55 percent. Senator Moynihan wants to stop his colleagues from applying — that is to say, misapplying — the Social Security surplus to the cover-up of the federal deficit.

Naturally, we prefer the Moynihan tax cut approach. We support his reduction of the Social Security payroll tax rate. But we urge the New York senator to propose one other piece of legislation: that as the Social Security surplus is removed as a cover-up for the federal deficit, Congress starts to slash spending on social programs dollar-for-dollar.

Then we shall be able to determine whether Senator Moynihan is sincere in his proposed tax reduction — or that he would simply steal from Peter's left pocket to put it back in his right pocket. Cutting Social Security payroll tax rates and then raising other kinds of taxes is, to pardon the expression, just so much blarney.

Finally, we still believe that Social Security, for those under 30 years of age, should be voluntary. The money contributed to Social Security, if contributed to IRAs or other kinds of longterm investments, would offer higher dividends and probably more security in 2015 and thereafter.

Clarification

The Belleville Alliance for Substance Education presentation by pharmacist Bill Lynch and Sgt. Joe Rotonda of Belleville's Narcotics Squad is scheduled for March 28, 7:30 p.m. at the high school library. The incorrect meeting date was listed in last week's editorial. Lynch and Rotonda will address substance abuse education. The meeting is open to all residents interested in learning more about the substance abuse menace knocking at our door.

Letters Welcome

The Belleville Times welcomes letters, preferably 300 words or less, from readers. To be considered for publication, letters must be typed or legibly handwritten and must include the writer's address and daytime telephone number. Unsigned letters will not be published and names will not be withheld, unless publication would jeopardize the writer's personal or job security. We reserve the right to edit for length and clarity.

YOUR OPINION

Pledges clean campaign

To the editor:

This May 8th, I intend to run for a seat on the newly mandated-Belleville Council. There will be many challenges facing our next group of township leaders, including the difficult task of making the transition from commission to council government. As a current commissioner, I believe I have the experience to make the transition a smooth one. As a future councilman, I will work hard to make the new Belleville Council productive and responsive to the people.

I have always said that it's not the type of government, but the people who are governing. In my three years as Commissioner of Public Works, I've done the most with the resources of my department, without ever exceeding my allotted budget. That's the kind of responsibility I pledge to bring with me to the Belleville Council.

I also pledge to run a clean campaign, without the mudslinging and catcalling that has cheapened so many Belleville elections in the past. Hopefully, we'll be able to focus on the issues this time around, like keeping taxes down, fighting crime, improving our township's roads and making sure we're getting every dime we've got coming from county, state and federal sources. To me, these things are more important than attacking someone's character with dirty politics.

In the weeks leading up to Election Day, I'll be writing a few more letters to this newspaper, outlining some of my ideas and positions for making Belleville a better place to live. I ask only that you consider what I have to say, and that you VOTE on Election Day.

It has been a great honor for me to serve on the Belleville Board of Commissioners. I look forward to continuing my service to the township as a member of the new Belleville Council.

Angelo C. Risoli

Good riddance!

To the editor:

I, for one, will always remember the year 1989 as the year we, the long-suffering, boobtube viewers witnessed the Joyful demise of the two most irritating pieces of TV programming in the history of television.

They were the "Crazy Eddie" commercial and the "Morton Downey Jr. Show." May they both forever "Rest in Peace."

Chet Dobkowski

Look at sheriff's resume

To the editor:

The democratic politicians, with the approval of our new Governor, Jim Florio, are busy wheeling and dealing to "saddle" us with a county executive they will be better able to manipulate. The "power brokers" have discovered to their chagrin our current County Executive, Nicholas Amato has a mind of his own. While this may have been bad business for them, the taxpayers of Essex County have enjoyed a no-tax-increase during his term of office, thanks to his administrative ability.

When the time comes to elect our county executive, we should take a hard look at Sheriff D'Alessio's resume, to evaluate HIS executive administrative ability.

After all, we will be hiring a manager to run Essex County, not merely electing a politician in a position to hand out favors.

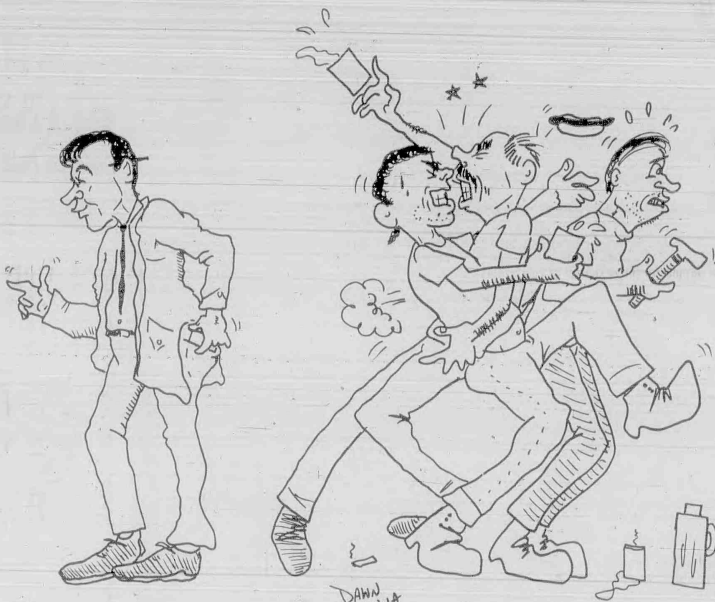
Cornelis P. Vander Zwan

Thanks for condolence

To the editor:

The family of the late Julia Wells wishes to thank each and everyone for the private and personal expressions of sympathy which has served to lighten our burdens of sorrow.

The family of Julia Wells



"Guess I better get to work on that editorial."

"We'd better get to work!!!"

Along the Passaic

Plastic bags are not answers

By Joseph W. Walsh
Environmental Specialist,
Passaic River Coalition

In the decade of the eighties, we've witnessed the development of a number of significant environmental trends. Among these were greater solid waste self-sufficiency, increasing participation in recycling programs, better management of our hazardous waste sites and more control over the development of wetlands. For most of us, these events have increased our awareness of the environment and have led us to change our daily habits with an eye toward reducing our individual impact on the environment.

Responding to these changes, American business has come to understand that being a "good environmentalist" is also good for business. (Just ask Exxon Corporation about the cost of being a "bad environmentalist"). In fact, there is money to be made in developing products which are marketed as being environmentally sensitive.

In this regard, one of today's most popular trends are the new biodegradable trash bags. All of the major trash bag

companies have a degradable bag on the market. You can't miss them at the grocery store — they have some sort of natural scene on the box, be it a bird or a tree or some such ecological symbol, all to convince us that their product helps the environment.

A good idea? Why not! Few things could be easier and be good for the environment at the same time.

Now we are learning that these new bags are either bad for the environment or they just plain don't work. Several national environmental groups are telling us to stop buying degradable bags. Their goal is total ban on these products. But why all the concern now?

The majority of these degradable trash bags contain some element which causes the plastic to break-down when it is exposed to the sun, wind and rain. But what exactly is it breaking-down into? Some studies have suggested that the final products of this break-down are actually worse than the bag itself. This could lead to greater water contamination of ground water supplies. There have also been reports that these bags decompose into hundreds of small pieces of plastic. Instead of one big plastic bag,

we will have to contend with all of these little pieces of plastic. This would have dire consequences for marine animals which mistakenly eat plastics thinking they are a source of food.

Finally, there is evidence that they just don't decompose like their manufacturers claim they do. Our landfills are great time capsules of our recent society. You can dig up a landfill and still read the newspaper on papers from thirty years ago! This is because our garbage, once buried, is not exposed to the sun, wind and rain which help it to break-down. Therefore, these degradable bags will not be exposed to these elements, decreasing their chances of working like they are supposed to.

Are we being subjected to some sort of environmental fraud by the trash bag companies? Probably not. At this point, this is not a question of what is good vs. what is bad. We won't be able to determine that until more detailed studies are done. In the meantime, we at the Passaic River Coalition have decided to stop using these bags until we know more. The saying "better safe than sorry" is best used in this situation by all of us.

Belleville Times

Serving Belleville Since 1909

(USPS 049-220)

Publisher: Frank A. Orechio

Editor: Anthony Buccino

Assistant to the Publisher:

Jaye Tarantino

Social Editor: Helen Maguire

Sports Editor: Michael Lamberti

Published Every Thursday

At 155A Washington Ave.

Belleville, N.J. 07109

Advertising Mgr: Lillyana Montanez

Art Director: Diane Lombardy

Art departments call:

759-3200

Annual Subscription \$14.00

Senior Citizens \$ 7.00

Second-Class Postage Paid

At Newark, N.J.

Postmaster: Send address changes

to: The Belleville Times

155A Washington Ave., Belleville, N.J. 07109

Middle School team teaching educates the whole child

(continued from page 1)

once a day. This allows for an exchange of ideas, a sharing of information and a co-ordinating of work between subjects. As an example, the science teacher may assign a research paper, the reading teacher handles the library skills, and the English teacher—covers form and grammatical structure. This total approach gives each student the maximum benefit of every lesson taught.

Add to the major subjects a wide choice of electives and you begin to see the B.M.S. concept. Students are offered such interesting subjects as basic guitar, electronic music, wood shop, cooking, art, typing and computers. The students also get physical education and health. Eighth grade students may take a foreign language, and all students are given drug education. The music department offers band, orchestra and chorus to those students who are interested. The choices seem endless, but there is sure to be something of interest to everyone.

DiMaggio and Vice Principal Frank Catrambone are veterans of the system. Both were there in the "old days" when the school was on the receiving end of bad jokes. It used to be called "the zoo" because everyone, students and teachers

alike, was crowded in. "It's no longer the zoo," DiMaggio said.

"I can only say I have a very good staff," DiMaggio said, "the staff really, really made the difference. The people of Belleville should realize the kinds of teaching that goes on not only in the Middle School, in all the Belleville schools.

"Don't forget the County Superintendent Dr. Ellen Scambio said in her report to the district in 1988, she called Belleville's schools 'the best kept secret'." DiMaggio said.

Both men will be quick to point out that a school is only as good as its faculty. This highly skilled group of professionals must not only work with the students, but must basically work with each other to keep the school running at peak levels. They must take "babies" from a safe elementary environment, and in two short years create well-rounded young adults ready to face the challenge of high school.

Thinking being a teacher is easy? Visualize your favorite adolescent.

Now multiply that precocious child times a class. Then multiply that class times five per day. (Remember that grades 7 and 8 is about the time when hormones kick in.) Yet these dedicated people make a life's work out of working with young people.

DiMaggio said, "We see the child as a whole child. The team teachers take into account how the child is doing academically, socially and physically."

"We still have retained some characteristics of the Junior High School. Our teachers are Secondary certified," DiMaggio said. "There is no Middle School certification. Our job was to, sort of, get a marriage with the elementary and the secondary styles of teaching."

The Middle School curriculum, until recently, worked around thematic units which included You & The Family. Lately the curriculum has been focused on improving test scores.

"We had to prioritize," DiMaggio said. We're "doing our job, the scores are improving, but things that make us a middle school, things like thematic units had to go to the sidelines for a time."

"They keep coming up with these tests," DiMaggio continued. "Next year the 8th grade students will be taking the High School Proficiency Test. Last year there was the report card. There's a continual pressure being placed on the schools. We're being compared, and we have to do our best to keep on top."

Through the use of computers, last year's 8th grade tests will be compared nationally. Again, we will be compared with schools in all fifty states."

Although the curriculum has changed to meet the needs of the 10-13 year olds from the subject oriented curriculum to a student oriented curriculum, DiMaggio said the

learning process is just as important as the way the child learns mentally and physically.

The middle school in 1982 had one resource room for special education students. Presently five rooms are designated for special education students who had previously gone out of district for their education, or were not identified as having a need for special education. There are 2 resource rooms, 1 room for neurologically impaired, and one room for the perceptually impaired. The resource rooms are used for special education, English as a Second Language, ESL, and Basic Skills.

The middle school day doesn't end when the bell rings. B.M.S. has a very active Student Council and a Builder's Club which promote public service, community activi-

ties and treats such as dances. Assisted by a terrific Home & School, headed by Mrs. Joyce Talbot, the B.M.S. students are offered enough extras to keep life interesting.

Belleville Middle School has a faculty staff numbering 54 and 2 full time guidance counselors. Many of these staff members are themselves products of the Belleville school system.

The original structure was built in 1915 and included what is now the girls' gym, auditorium and the offices. Inside the building, the original exterior windows in the auditorium and the girls' gym are still partially visible.

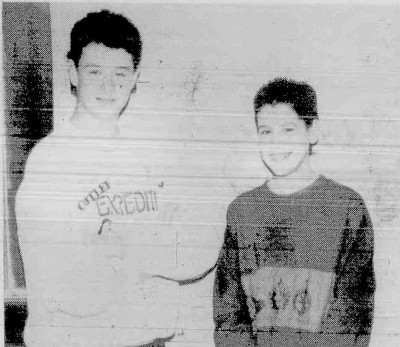
In 1920, two wings were added to make the building's shape change from a T to a square. At that time, 18 classrooms were added.

In 1936, Works Project Adminis-

tration funds were used to add on to the front of the building what is now the boys' gym, and science rooms. Looking at the building from Washington Ave., two Belleville High School designations are visible and delineate the architecture. The building was used as the high school until 1964 when the new high school on Passaic Ave. was opened.

During the past ten years, improvements have been made to the building including asbestos removal, new fire doors in the stairwells, new wiring and new lighting. Additionally, the ceilings were lowered in the hallways to conserve energy.

So, the next time you're driving along Washington Ave. and see that familiar structure, remember, it's Belleville Middle School - another good reason to be proud of Belleville.



G BEE — Keith Dovicic (left) and Danny Brunello of the Belleville Middle School listen prior to writing down the three final answers of the state-run geography bee. Brunello went on to win the bee and will now advance to the next level of competition.

ADVERTISEMENT

60 days to rollover

Funds withdrawn prematurely from a retirement plan may be fully taxable in the year of distribution and may be subject to a 10 percent penalty. You can, however, deposit the proceeds in an IRA within 60 days of receiving the funds. You will have "rolled it over" and neither tax nor penalty will apply. The IRS has ruled that the 60 day limit cannot be extended for any reason, so make sure you complete your rollover as soon as you receive the funds.

If you have any questions, please contact Bert Tobia, District Manager at H & R Block, at 365-0999.

Formerly "Legends"

Grand Opening
February 16



"Come to Crooks and you won't get robbed"

College Night
TUESDAY
\$5 TAP BEER
All You Can Drink
8 p.m. till closing

Ladies' Night
WEDNESDAY
ALL LADIES' DRINKS
1/2 PRICE
6 p.m. till closing — D.J.

Jello Night
THURSDAY
JELLO SHOTS and
Funky Cold Medinas
(Specialty Drinks)

Party Time
FRIDAY
D.J. & DANCING
Top 40 Mix — All Types
Music - Drinks 1/2 Price
4:00 - 9:00 P.M.

Date Night
SATURDAY
Ladies Drinks 1/2 Price
till 11 P.M.
D.J. Plays Top Hits
50's, 60's, 70's, 80's.

Oldies Night
SUNDAY
9 - 2; Open at Noon

KITCHEN OPEN
11 A.M. - 1 A.M.
Monday through Friday
1 P.M. - 12 P.M.
Saturday & Sunday
PARTIES WELCOME!
CATERING AVAILABLE

Two Large T.V.'s
Sports Channel
C.D. Juke Box

SENIOR CITIZENS
Daily Food Discounts
20% OFF

153 Belleville Ave., Belleville, N.J.

Major credit cards accepted

759-7706

We Deliver!
Open 7 Days

GINO'S PIZZA
545 Washington Avenue
BELLEVILLE

TUESDAY SPECIAL
Extra Large Pizza
\$3.95 @ 11 PM

CATERING
We Will Beat Any Price!

751-5848

Paul Goldman, CPA
is pleased to announce the
relocation of his accounting practice
to offices at

163 Washington Avenue
Belleville, New Jersey 07109

201-759-7791
CALL FOR APPOINTMENT

Income Taxes Prepared
Corporate Accounts Welcome
— Professional Courteous Service —

Member — Belleville Chamber of Commerce

PRIDE IN THE PAST, CONFIDENCE IN THE FUTURE: NUTLEY SAVINGS BANK TODAY.

For more than one hundred years Nutley Savings Bank has been making history by helping residents to build homes and businesses and by taking an active role in community affairs.

From a single service passbook association in 1886, Nutley Savings has grown into a modern, full-service, financial institution.

Today, Nutley Savings Bank serves more than 25,000 customers with assets of more than \$220 million. As one of New Jersey's largest savings banks, we are proud of our winning combination of financial expertise and community involvement.

Our directors and staff eagerly look forward to an even brighter future.

So if you have plans for the future, plan on contacting us. We're always striving to be better. Write our president, John Kelly, at 371 Franklin Ave., Nutley, N.J. 07110.

NUTLEY SAVINGS BANK

MAIN OFFICE: 371 Franklin Avenue, Nutley, N.J. 07110 • Phone: 661-3300
BRANCH OFFICE: 221 Washington Street, Newark, N.J. 07102 • Phone: 623-7090 • S.I.A.

1886-1990

1ST NATIONWIDE NETWORK



OBITUARIES

William (Willie) LaMorte, 86, was boxing champ

William (Willie) LaMorte, 86, of Belleville, who had been the world flyweight boxing champion and was elected to the National Boxing Hall of Fame, died Feb. 6 in the Clara Maass Medical Center, Belleville.

A Mass was offered Feb. 9 in Holy Family Church, Nutley, following the funeral from the Zarrow Funeral Home, Bloomfield.

Mr. LaMorte was crowned the flyweight boxing champion on Aug. 22, 1929, when he outpointed Cpl. Izzy Schwartz in a 15-round match in Newark. He successfully finished his title with a seventh-round knockout over Frisco Grande three months later. He was

outpointed in a title bout on May 16, 1930, by Midget Walgast and retired in 1931.

Mr. LaMorte was inducted into the Boxing Hall of Fame in 1967. He was the past president of Ring 25 of Essex, Union and Morris Counties.

Born in New York City, Mr. LaMorte lived in Newark's First Ward before moving to Belleville in 1955.

Surviving are three sons, Anthony P., Patrick W. and Salvatore F.; three sisters, Rose, Mrs. Elizabeth LaCapra and Mrs. Concetta DeFilippis; seven grandchildren and eight great-grandchildren.

Mrs. Desiderio, 60

Mrs. Patricia Desiderio, 60, of Middletown died Feb. 7 in the Riverview Medical Center, Red Bank.

A Mass was offered Feb. 10 in the Holy Family Church, Nutley, following the funeral from the Megaro Memorial Home, Belleville.

Mrs. Desiderio had been a senior library assistant at the main branch of the Newark Public Library,

where she worked for 11 years, retiring 10 years ago.

Born in Brooklyn, she lived in Belleville before moving to Middletown 10 years ago.

Surviving are her husband, John; a son, John; a daughter, Mrs. Nancy DeMarinis; a brother, Charles Surry; a sister, Mrs. Alena Ordman, and five grandchildren.

Andrew Napolitano, 63

A Mass for Andrew Napolitano, 63, of Belleville was offered Feb. 3 in St. Lucy's Church, Newark. Arrangements were by Cremation Funerals of New Jersey, Orange.

Mr. Napolitano died Jan. 31 in Mountainside Hospital, Glen Ridge.

He was a chauffeur for the

hard Industries in Iselin for the past 24 years.

Born in Newark, he moved to Belleville 25 years ago.

Surviving are his wife, Louise; a son, Robert; three daughters, Mrs. Valerie Miccheli and Andrea and Joan; a sister, Mrs. Mildred Aulisi, and three grandchildren.

Mrs. Sullivan, 89

Mrs. Wilhelmina Sullivan, 89, of Belleville, who served in the Navy during World War I, died Feb. 5 in the Clara Maass Medical Center, Belleville.

A Mass was offered Feb. 6 in St. Mary's Church, Nutley, after the

funeral from the Kiernan Funeral Home, Belleville.

Born in Newport News, Va., Mrs. Sullivan lived in Newark before moving to Belleville 42 years ago.

She is survived by two daughters, Willa T. and Anne B.; a brother, Thomas McCauley; and a sister Clara McCauley.

John Roller, 83

John Roller, 83, of Belleville died Feb. 9 in the Clara Maass Medical Center, Belleville.

Mr. Roller was a printer for more than 40 years with the Newark News before it closed in 1972. He was a member of the Newark Typographical Union for over 60 years and a member of the McGreevey Association.

Born in Newark, he lived in Belleville for most of his life. Surviving are six grandchildren and 18 great-grandchildren.

Roberta Hart, 83

A Memorial Service for Roberta Hart, 83, of Lakewood was held Feb. 4 in the Weatherhead-Young Funeral Home, Brick.

Mrs. Hart died Feb. 3 in the St. Barnabas Hospital, Livingston.

She was a member of the Leisure Village East Chapter of Deborah and had been president of Eastern Star of Lakewood. Mrs. Hart was also a member of the Episcopal Guild and Republican Club, both of Lakewood.

Born in the Netherlands, she lived in Lyndhurst, Belleville and Verona before moving to Lakewood 19 years ago.

Surviving are her son, Victor; daughter, Mrs. Barbara Hewitson; two brothers, Jake and Richard Groenendyke; a sister, Geri Groenendyke, and five grandchildren.

Catharin Flynn, 67

Mrs. Catharin Flynn, 67, of Belleville died Feb. 9 in the Clara Maass Medical Center, Belleville.

Services were held Feb. 12 from the Kiernan Funeral Home, Belleville.

Surviving are her husband, How-

ard; two sons, Howard Jr. and Leo; a daughter, Mrs. Kathleen Donnelly; three sisters, Mrs. Margot Froats, Mrs. Genevieve Detwiler and Mrs. Elizabeth Barker; eight grandchildren and four great-grandchildren.

Joseph Mazzetta, 77

A Mass for Joseph Mazzetta, 77, of Fairfield, formerly of Belleville, was offered Feb. 5 in St. Anthony's Church, Belleville, following the funeral from the Zarrow Funeral Home, Bloomfield.

Mr. Mazzetta died Jan. 31 in the Lincoln Park Nursing Home.

He was a forklift mechanic with Modern Handling in Hasbrouck Heights for 17 years before retir-

ing in 1977. Born in Italy, he lived in Belleville before moving to Fairfield three years ago.

Surviving are his son, Frank; a daughter, Mrs. Roseann Capozzi; a brother, Frank; four sisters, Mrs. Frances, Pascher, Mrs. Santa Fecko, Mrs. Antoinette Ferrara and Mrs. Patricia Castellano, and six grandchildren.

W. McAloon, 81

Wilfred J. McAloon, 81, of Clifton died Feb. 4 in St. Mary's Hospital, Passaic.

A Mass was offered Feb. 7 in St. Andrew's Church, Clifton, following the funeral from the Shook Funeral Home, Clifton.

Mr. McAloon had been a salesman with the Getty Oil Co. in Newark for 22 years before retiring 22 years ago. Born in New Britain, Conn.,

he lived in Belleville, Nutley and Wood-Ridge before moving to Clifton in 1964.

Surviving are his wife, Harriet; two daughters, Mrs. Margaret Bartel and Mrs. Judith Piccirilli; three sons, Robert, Wilfred and John; two brothers, Clarence and Charles; 15 grandchildren and three great-grandchildren.

F. Annechiarico, 82

Frank Annechiarico, 82, of Belleville died Feb. 5 in the Irvington General Hospital.

Private services were under the direction of the Megaro Memorial Home, Belleville.

Mr. Annechiarico had been a machinist with the Western Electric Corp. in Kearny for many years, retiring 15 years ago. Mr.

Annechiarico was an amateur lightweight boxer in the late 1920s.

Born in Newark, he lived in Belleville for many years.

Surviving are his wife, Mary; a daughter, Mrs. Angela Mary; a son, Frank Anico; two sisters, Mrs. Jay Malle and Mrs. Ann DeJannet, and six grandchildren.

A. Luciano Sr., 60

Anthony B. Luciano Sr., 60, of Bonton died Feb. 6 in the Morristown Memorial Hospital.

A Mass was offered Feb. 9 in St. Pius X Church, Montville, after the funeral from the Lewis & Carey Funeral Home, Bonton.

Mr. Luciano was an operating engineer for the Operating Engineers Union Local 825, Newark for

many years. He served in the Navy during the Korean Conflict.

Born in Belleville, he lived in Newark before moving to Bonton 34 years ago.

Surviving are his wife, Henrietta; a son, Anthony Jr.; a daughter, Karen, and his mother, Mrs. Mary Luciano.

J. Nisiovocia, 90

James Nisiovocia, 90, a lifelong resident of Belleville, and a Navy veteran of World War I, died Feb. 7 in the Clara Maass Medical Center, Belleville.

Services were held Feb. 9 in the Kiernan Funeral Home, Belleville. Mr. Nisiovocia had been an inspector of quality control for the

DuPont Co., Kearny, for over 50 years before retiring. He was a member of the Belleville Senior Citizens.

He is survived by a son, Thomas; two daughters, Mrs. Grace Brasser and Mrs. Michela Godino; 14 grandchildren and seven great-grandchildren.

Anna Mari, 93

A Mass for Mrs. Anna Mari, 93, of Belleville, a founder of Nanna's In The Park, will be offered Friday in St. Lucy's Church, Newark, after the funeral from the Megaro Memorial Home, Belleville.

Mrs. Mari died Feb. 11 in her home.

During the 1920s, she and her late husband, Joseph Mari, founded Nanna's Restaurant, a fish store located on Cutler Street in Newark's Old First Ward. Later, after success led them to relocate to

larger facilities in Belleville, Mrs. Mari founded "Nanna's In The Park," a popular New Jersey Italian restaurant, which has been in existence for the past 36 years and now is managed by her daughter, Mrs. Etta Gaeta and two grandchildren, Mrs. Lyn Agresti, banquet manager, and Alan Gaeta, chef.

Born in Naples, Italy, she lived in Newark before moving to Belleville many years ago. Mrs. Mari is also survived by two great-grandchildren.

For Complete and Reliable Tax Preparation at Reasonable Rates Call

FEDE INSURANCE AGENCY AND TAX SERVICE
429-8192
(Call for appointment or walk in)

Complete Year-Round Tax & Accounting Service
31 Franklin St. Bloomfield

RELIGIOUS VIEWPOINT

Gerald Fortunato, Pastor
Silver Lake Baptist Church

Dare to Be Different!

D.L. Moody once said, "Most people talk cream and live skim milk." Jesus said, "This people draweth nigh unto me with their mouth, and honor me with their lips; but their heart is far from me" (Matt. 15:8). And this is true today when we see Christian young people who have been redeemed by the previous blood of Jesus, living in sin, ugliness, and worldliness!

Young person, dare to be different! Be willing to live a clean, wholesome, separated life for Jesus. Oh, I know what the gang will say. They'll call you a "Holy Joe," "Psalm Singer," or "Religious Fanatic." But who cares what they call you. Live for Jesus! Dare to be different. Listen...we need young people today, like Daniel of old, who "would not defile himself with the portion of the king's meat" (Daniel 1:8). And like Moses "Choosing rather to suffer affliction with the people of God, than to enjoy the pleasures of sin for a season" (Hebrews 12:25). The Bible says, "Thou wilt show me the path of life: in Thy presence is fulness of joy; at thy right hand there are pleasures for evermore" (Psalm 16:11).

No doubt in your daily Christian life you are confronted with real decisions. You've asked yourself many times, "Should I do this?" or "should I go there?" And you've often let the desires of your heart influence your decision.

You see it is not what we think or what we want, that makes it pleasing in God's sight, but what does the Word of God say! Ask yourself the following questions:

1. Does it violate any particular part of Scripture?
2. Does it take the keenness out of my spirituality?
3. Can I ask God's blessing on it?
4. Will it be a stumbling block to someone?
5. Is it expedient?
6. Would I want to see the Lord Jesus doing it?
7. Does it bring glory to the name of Jesus?
8. Would I want to be doing that thing when Jesus comes?

May all of us surrender our lives completely to Jesus. Crown Him Lord of our lives! Let us dare to be different!

Candidates' Events

The Friends of Joseph T. Fornatto is sponsoring a fund raising buffet and dance at 7:30 p.m. Saturday, Feb. 17 at the Chandelier, 338 Franklin Ave.

A reelection rally for Board of Education incumbent Patricia Pisano will be held at 7:30 p.m. Sunday, Feb. 18 at the Knights of Columbus, 98 Bridge Street.

The Committee to Elect Kevin G. Kennedy to Belleville's 3rd Ward Council seat will hold a kickoff breakfast at 10:30 a.m. Sunday, March 11 at Bella Casa, Acme St.

March 17, A New Beginning, sponsored by Citizens for a Better Belleville, at 7:30 p.m. at the Chandelier.

Knights of Columbus honor Joseph Wolf

Belleville Knights of Columbus Council 835 honored Past Grand Knight Joseph Wolf Jan. 20.

More than one hundred people were on hand to honor Wolf who served as the council's Grand Knight from 1987-1989.

Emcee Past Grand Knight Ken Murray introduced Frank Corbo, the event's chairman, and six other Past Grand Knights who attended, James Kiernan, Tom Dillon, Robert Cusick, Robert Nebeling, Ken Murray and Ralph Wendler.

It seems like only Yesterday

By Eric Quinones

Board of ed election

25 Years Ago

February 11, 1965...Incumbents Dr. Frank DiRuggiero and Norma McCool were reelected and Pasco Saletta was named to his first term by Belleville voters in the board of education election.

Dr. DiRuggiero paced the 10-candidate field with 2,401 votes. Saletta was second with 2,065. McCool finished with 1,626, just 188 votes more than fourth-place finisher Evelyn Hannon.

Voters also turned down the proposed school budget, 1,548-1,409 (current expenses) and 1,538-1,206 (capital outlay).

The budget defeat meant the present members of the board had to meet to go over the figures and make a suitable proposal to the voters.

Municipal budget approved

A 1965 municipal budget of \$3,308,188.10 was introduced at a special meeting of the town council by a 3-2 vote. The budget was opposed by Councilmen James R. Golden and William H. Cullen on the grounds that the anticipated revenues were too high.

The budget listed a total of \$2,163,619 to be raised by taxes, an

increase of \$186,040 from 1964. While the entire municipal budget was up, only an increase of \$11,921.96 was charged directly to the town's operating budget. The major shares were in the amount of reserves of uncollectable taxes from the school and county budgets.

Bellboys lose game, Rush

The Belleville High School basketball team suffered a pair of devastating losses — a 51-45 defeat at the hands of West Orange and an ankle injury to leading scorer Bill Rush.

West Orange scored eight straight points in overtime to down the Bellboys, who fell to 10-7. The loss dropped Belleville into fifth place in the Big Ten Conference.

Rush came down hard on his ankle after sinking a jumpshot before halftime. Eventually, he was taken out in the third quarter. Rush finished with 14 points, while teammate Rick Pucciarello added 11.

THE MARKET BASKET

Roast beef...\$1.99 per lb.
Hot ham...\$1.39 per lb.
Yogurt...10¢
Pretzels...25¢
Pecan rolls...25¢
Grapefruit...39¢ for 5.

NOW OPEN

ELECTROLYSIS STUDIO By Lisa

Former Electrolysis Instructor of Kree Institute of New York offers
SAFE AND PERMANENT HAIR REMOVAL
(DISPOSABLE NEEDLES)

INTRODUCTORY OFFER

\$10 for 15 Minute Treatment

Call 450-4480 Weekdays after 3 p.m.

567 FRANKLIN AVENUE, BELLEVILLE

Offices of Dr. Paul Stefaneli, Chiropractor Open Saturdays and Evenings

IRVINE
Cozzarelli
Memorial Home
IN YOUR TIME OF NEED
"A Family Name You Can Trust"



James J. Cozzarelli, Jr.
Owner/Manager

276 Washington Avenue
Belleville
759-1114

Why wait for your federal income tax refund?



- receive your refund anticipation loan in a matter of days
- no cash needed — all fees can be withheld from your check
- available whether we prepare your return or not

H&R BLOCK®

125 WASHINGTON AVE., BELLEVILLE • 751-3836

155 FRANKLIN AVE., NUTLEY • 235-1000

40 BROAD ST., BLOOMFIELD • 743-0898

OPEN 9 AM - 9 PM Weekdays • 9 - 5 Sat. & Sun.

APPOINTMENTS AVAILABLE

Master Card, Visa, Discover & American Express Accepted

Speakers for your club or civic group available free of charge.

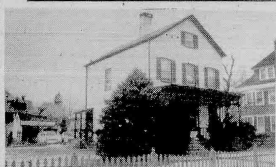
Call any office for information.

Century 21

Each office is independently owned and operated.

WAYNE K. THOMAS

Bloomfield 429-7400 Realtor



BLOOMFIELD How do you spell VALUE?
This 3-Bedroom Colonial spells it with numbers...
\$179,900. For a home with lots of land 75 x 175. Call
Joan at 226-3007.



BLOOMFIELD
4-family dwelling. Investment property, over \$35,000 in-
come, large parking lot, sep. utilities. Eves. call 338-8869.



BLOOMFIELD 2-FAMILY
3 & 5 room apartments, 2-car garage. Asking \$168,000.
Eves. call Neil at 759-1447.



BLOOMFIELD
Ideal for a large family. Feat. 6 bedrooms, 2 car garage
and much more. Asking in the low \$160's. Eves. call Roy
at 743-6997.

TOO NEW FOR PICTURE

BLOOMFIELD
ONLY \$138,500.

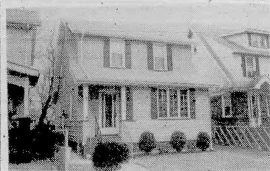
2-Family, Estate Sale.
Priced to sell immediately.
Evenings call Roy
at 743-6997.



BLOOMFIELD \$120's
Don't put off till tomorrow what you can buy today!
House priced to sell. Eves. call Mike at 743-1551 or
Diana at 485-5077.

AWARD AGENCY

Nutley 661-3808 Realtor



NUTLEY \$195,000
It's all been done in this 3-Bedroom Colonial. New kit-
chen with oak cabinets and tiled floor, new ceramic tiled
bath, new windows, roof, and siding. Move right in!



NUTLEY \$198,000
One of a kind. Ultra modern contemporary Colonial with
euro-kitchen, extraordinary family room, king size bed-
rooms. This jewel is maintenance free. Call 661-3808.



BELLEVILLE \$189,900
A honey for the money. This sunny bright 3 Bedroom Col-
onial with fireplace and family room is in tip top condition.
Call 661-3808.



BELLEVILLE \$217,000
Look no further. Style, quality & charm describe this
gracious 4 Bedroom, 3 bath colonial. Feats. family room &
den. Get ready to entertain in banquet size dining room.

CONDOS/TOWNHOUSES

BELLEVILLE — 26 Clinton St.	\$78,900
NUTLEY — 25 River Rd.	109,900
NUTLEY — 101 River Rd.	113,900
BLOOMFIELD — 159 Franklin St.	119,000
NUTLEY — 105 River Rd.	121,900
NUTLEY — 25 River Rd.	144,900
NUTLEY — 113 River Rd.	148,900

Call 661-3808 Now For Details!
Become a Homeowner in 1990!

ATTENTION!

All Licensed Real Estate Agents.
Join the winning team in 1990.
Receive complete training and support from
the experienced professionals.
FOR DETAILS CALL NOW
661-3808
ASK FOR ANGELA IL GRANDE

STANFORD AGENCY

Nutley 235-9000 Realtor



THE MONEY'S UPSTAIRS
Live on the first floor, rent the second when you invest in
this recently remodeled 2-Family with 2 bedroom apart-
ments and separate utilities. Great rents!
BELLEVILLE \$185,000



WHERE'S THAT CROWD HEADED?
To the busy location of this commercial property. Three
stores and two apartments. Owner will finance with
\$75,000 down to qualified buyer.
BELLEVILLE \$325,000



ESCAPING THE RENT MONSTER
Get rescued in this easy to own colonial with 1½ baths,
finished basement and more! Call for more details and an
appointment to view.
NUTLEY MAKE OFFERS



A BRIDGE TOO FAR?
Crossing over to home ownership seems impossible? Not
once you see this adorable 3-bedroom colonial with many
extras in desirable area.
NUTLEY \$169,900

TOO NEW FOR PICTURE

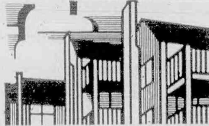
Free Home! Of course not!
But the next best thing.
This lovely Belleville expanded Cape offers
3 Bedrooms, dining room, family room and
more. In a great family neighborhood.
Hurry!

BELLEVILLE \$159,000

A CV REAL ESTATE

Clifton 365-2122 Realtor

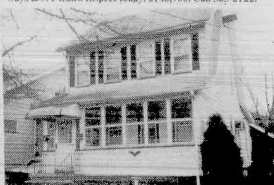
Condominiums



CLIFTON EASTWOOD GARDENS
Large Allwood Condo, end unit, offers 2 BR's, mod kit w/
dining area, lovely window treatmt. & w/c carpet. 1 Year
Warranty to Buyer provided. Super locat., near maj. high-
ways & NY trans. Inspect today! \$148,900. Call 365-2122.



CLIFTON EXTREMELY IMPRESSIVE
Very charming Rosemar Colonial offers 3 BR's, den &
jalousied porch, tile, lin. hnt w/bar & p.w.d. rm. Large
property w/patio & 2 car gar. Also 1 Year Warranty to
Buyer. Asking \$259,000. Call 365-2122.



CLIFTON LAKEVIEW TWO FAMILY
Great starter or income producer, well maintained 4 & 1
room apt's, w/g. driveway, patio & semi-fin. hnt, plus
enclosed porch. Priced to sell at \$185,000. Call 365-2122.



CLIFTON SINGLES/NEWLYWEDS
Come inspect this lovely Athena starter Ranch in great
neighborhood. Features 2 BR's, 1 car garage, encl. porch
plus new heating syst. Negot. at \$169,000. Call 365-2122.



CLIFTON YOUNG DUPLEX
Duplex style Two Family, all modern, w/2 BR's ea. side
plus lg deck, parking for 6 cars & grade level basement w/
professional potential. Call for details. Asking \$273,000.
Call 365-2122.



CLIFTON PRESENT YOUR OFFER
Lovely 3 BR home, great location, offers fin bsmt w/M.D.
patent, sunken LR, 1½ & ½ baths, plus 1 Year Warranty
to Buyer. See & make offer. Only \$169,500. Call 365-2122.

Celebrate Books

The February segment of "Celebrate Books from the Belleville Public Library and Information Center," in conjunction with the Essex-Hudson Regional Library Cooperative and Libraries in Focus, features book discussions by assistant library director, Adrea Cohen, on Black History Month, and books by Cindy LaRue on American History Month. The program was produced by Marilyn McCabe, Media Specialist, Belleville High School. The staff of WBHS who assisted Ms. McCabe in the program included Joseph Mauriello, director, Rui Andre, audio, Christopher Krisocki, video switcher; Rich Mathews, Kim Frane, and Derek Chulanadana, camera; Gerald Tucci, manager, and Rob Halpin, VCR.

The program can be viewed on Suburban, Channel 34, and reaches 150,000 people in Belleville, Bloomfield, Glen Ridge, and the Oranges.

Best sellers at the library

Paperback best sellers at the Belleville Public Library and Information Center, includes "Web of Dreams," by V.C. Andrews, "The Drawing of the Three," by Stephen King, "Mutation," by Robin Cook, "The Sands of Time," by Sidney Sheldon, "The Long Dark Tea Time of the Soul," by Douglas Adams, "A Thief of Time," by Tony Hillerman, "Spy Hook," by Len Deighton, "French Kiss," by Eric Lustbader, "The Shell Seekers," by Rosamunde Pilcher, "The Fortune," by Michael Korda, and "The Gunslinger," by Stephen King.

If the book is not on the shelf, the Circulation Desk will be glad to put the book on reserve for you for 25 cents per title.

How To's

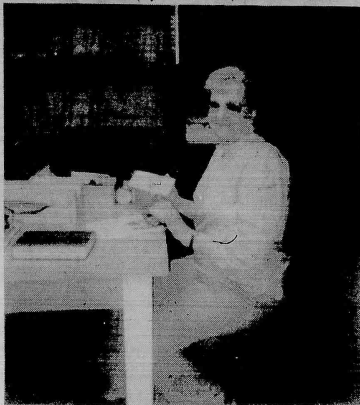
Do you want to learn how to burglar proof your home, cheerlead, provide craft and gift ideas, cut hair, provide adequate home security, write a winning resume, learn to dance in minutes, execute photographic design? The Belleville Public Library and Information Center has these how to videos, as well as many others.

To take out videocassettes, one should have a Belleville library card. The fee is \$1 per night and \$2 on weekends and holidays.

The monies are used to buy new releases in children's and adult video.

BOOKMARKS

By Adrea Cohen



Evelyn Lawrence helps process books at the Belleville Public Library and Information Center, getting them ready for the public.

New health acquisitions

New books on health that have been added to the Belleville Public Library and Information Center may offer helpful hints on improving your health. Among the titles that have been added are "Better Health and the Reverse Effect," by Walter A. Heiby, "Cholesterol Cure Made Easy," by Sylvan Lewis, "Feeding the Brain: How Foods Affect Children," by G. Keith Conners, Ph.D., "The Eight Week Cholesterol Cure," by Robert E. Kowalski, "Protect Yourself From Lyme Disease," by Diana Benzaia, "Prescription Drugs," by the Editors of Consumer Guide, and "Walk Don't Die," by Fred A. Stutman, M.D.

The books are located in the 600's of the New Books Section of the Belleville Public Library and Information Center. If the book is not on the shelf, the Circulation Staff will be happy to put the book on reserve for 25 cents per reserve.

There's magic in your smile

The month of February 1990 marks the 41st observance of National Children's Dental Health Month with the theme "Smile America: There's magic in your smile!" In honor of this observance, the Belleville Public Library and Information Center will have as its featured speaker on Feb. 20 and 22, Dr. Robert Ramer, Nutley dentist, who will speak to the preschool mothers and others who wish to attend on "Proper Dental Care," at 10:30 a.m.

Dr. Ramer attended Rutgers University and Seton Hall Dental School, now the New Jersey College of Medicine and Dentistry, receiving his D.D.S. degree in 1962. He served in the U.S. Dental Corps as a Captain and was stationed at Fort Knox, Kentucky, from 1962-1964. He has spoken widely to schools and libraries.

Residents on Dean's List

Damaris Rivera of Belleville is among the 46 Montclair State College students listed in this year's edition of Who's Who Among Students in American Universities and Colleges.

The annual directory lists students who have been selected on the basis of academic achievement, service to the community, leadership in extracurricular activities and potential for continued success. They are selected from more than 1,400 institutions of higher learning in all 50 states, the District of Columbia and several foreign nations.

Students have been honored in the annual directory since it was first published in 1934.

Susan Aschauer of Van Keyper Place, has been named to the Bucknell University dean's list. Aschauer, the daughter of Joseph and Gertrude Aschauer earned a grade point average of 3.5 or higher to receive dean's list recognition.

Michele Suchomel, a 1986 graduate of Belleville High School, has been named to the Fall 1989 semester dean's list at Hunter College in New York City.

Edward J. Oldak, the son of Mr. and Mrs. Edward Oldak of Belleville has been named to the dean's list at William Paterson College's School of the Arts and Communication.

ADVERTISEMENT

Paul Goldman has been practicing accounting since 1975, working for both large and small CPA firms. In August 1987 he began his own firm specializing in emerging businesses. Paul understands the problems and the pitfalls awaiting the small business owner and is available to assist you in a way different than most accountants.

Paul Goldman, CPA, is affiliated with the Small Business Development Centers at Pace University in Manhattan and Rutgers University in Newark. Through these associations, Paul has been responsible for a number of possibilities becoming realities. One phase of the service rendered includes the preparation of a three-year cash flow and income projection. These tools can be invaluable to any emerging or growth oriented company.

Paul's current clients include companies and individuals in retail sales, real estate, law, chiropractic, psychotherapy, travel, consulting, public relations, advertising, wholesale manufacturing and sales, employment, and heating, ventilating and air conditioning. Previous to beginning his own firm, Paul Goldman specialized in all phases of Garment Center clients, ranging from fabric brokers to manufacturers to commission sales and in the real estate field. He is also available to prepare personal income tax returns and offers consultations on investments, tax and estate planning and financial budgeting.

In speaking with large numbers of business people, he has discovered that many are unhappy with their present accountant because the accountant is often unavailable to speak to them, lacks a real caring for their business or does not speak to them on a level that they can understand. His commitment is to provide services to support your business with warmth, integrity and the highest quality of communication.

Paul and his wife Jeanette are residents of Belleville and are expecting their first child in May. His office is located at 163 Washington Avenue, Belleville, telephone 201-759-7791.

Popular videos added

The following popular videocassettes have been added to the collection of the Belleville Public Library and Information Center: "Dead Bang," "Death Before Dishonor," "For the Love of It," "Ghost Busters II," "Indiana Jones and the Last Crusade," "Lean On Me," "License to Kill," "Scrooged," "See No Evil, Hear No Evil," "Star Trek V," and "That's Black Entertainment."

What's on display

In the library's main display case is an exhibit of handpainted boxes and miniature art by Mariella Franco. Also on display is a Proclamation for American History Month by Mayor Pizzi of Belleville in conjunction with an exhibit on Philadelphia for American History Month, provided by the Yantacaw Chapter of the DAR and arranged by Lenora Keeney of the DAR and assistant library director Adrea Cohen.

Ask a lawyer

The "Ask a Lawyer" series returns to the Belleville Public Library and Information Center on March 5, at 7:30 p.m. with a lecture on "Buying A Home." An attorney will take you from contract to closing, with a discussion of the entire process of buying a home. Call the library at 450-3434 to register for the lecture.

Future lectures will be "Going Into Business" on March 12, "Family Law" on March 19, and "Trusts and Estates" on March 26. All lectures will start at 7:30 p.m. The series is a public service of the Essex County Bar Foundation and features volunteer speakers from the Essex County Bar Association.

Historian to speak

Belleville historian Bob McFadyen will speak at the Friends of the Library February program on Feb. 15, at 7:30 p.m. on "The History of Belleville." This is a special Friends' program in honor of American History Month. The public is invited to attend.

Calendar of Events

Feb. 20 — Toddler, Preschool Story Hour begins. Preregistration required. 9:30, 10:30 a.m. in the James J. Cozzarelli Jr. Children's Room.

The film, "George Washington in New Jersey" will be shown from 1:15 to 2 p.m. at the Shafter Branch, 30 Magnolia Street.

Dr. Robert Ramer, Nutley dentist, will speak on proper dental care at 10:30 a.m. at the Main Library, 221 Washington Avenue.

Crocheting Class for Beginners and Intermediates at the Belleville Public Library and Information Center with Anna Rosa Mazur from 1 to 3 p.m.

Feb. 21 — "To Be Young, Gifted, and Black," a video presentation in honor of Black History Month, at 1 p.m. at the Belleville Public Library and Information Center, 221 Washington Avenue. The public is invited to attend.

Feb. 22 — Toddler, Preschool Story Hour begins. Preregistration required. 9:30, 10:30 a.m. in the James J. Cozzarelli Jr. Children's Room.

Dr. Robert Ramer, Nutley dentist, will speak on proper dental care at 10:30 a.m. at the Main Library, 221 Washington Avenue.

Feb. 24 — Secret Movie at 10:30 a.m. in the James Cozzarelli Jr. Children's Room.

Feb. 27 — Craft Workshop with Adrea Cohen at 10:30 a.m.

"Making Burlap Wall Hangings. Call the library at 450-3434 to register.

New references for business

"Training Managers To Train: A Practical Guide to Improving Employee Performance" and "New Employee Orientation," are two new business books added to the Belleville Public Library and Information Center's Collection. They are located in the New Books' Section of the Library, 331.2, if you wish to take them out.

Saint Peter Elementary School
152 William Street
Belleville, New Jersey 07109

Basic Curriculum: Daily — Religion, Mathematics, Social Studies, Science
Language Arts Program:

Reading, Grammar
Composition, Spelling
Phonics, Penmanship
Weekly — Art, Health Education, Library,
Music, Physical Education,
Human Sexuality
Gr. 3 - 4 Computer Literacy;
Gr. 5 - 8 Computer Lab

Advanced Programs: Mathematics Gr. 1-8; Reading Gr. 1-8
Honors Program: Grade 8; Algebra I, Physical Science,
Literature

Basic Skills: Individualization in Math, Reading,
Language Arts for students in need of remediation. Provided by Essex County Commission and Belleville Board of Education.

Plus Factors: Monthly liturgies, paraliturgies, field trips,
Christmas and Spring Musical and Drama Plays.

Student Activities: STUDENT COUNCIL, Assembly Programs,
Intramurals, relay races, contests, in-school club program.

Sports: Gymnastics PK-8, Track PK-8, Indoor soccer PK-5,
Volleyball 6-8, Basketball Boys 4-8 and Girls 5-8, Softball 5-8, Baseball 6-8,
Cheerleading 1-8.

Physical Plant: Gym, Computer Lab, Science Lab,
Library, Resource Areas, Cafeteria (hot lunch), Outdoor facilities for track, Nature walks, Park within walking distance.

Faculty: Composed of seven Sisters of Charity and 11 Lay Teachers, who are degreed and certified, a nurse and auxiliary staff providing support instruction in Mathematics, Language Arts, Reading, Basic Skills, ESL, and Speech. A Child Study Team is also provided by the Belleville Board of Education.

Student Body: PreK - 4 : 9:00 a.m. - 2:00 p.m.
FULL DAY Kindergarten
Grades 1 - 8
After School Program 3:00 - 6:00 PreK and up
Before School Program 7:00 - 9:00 PreK
7:00 - 8:00 K and up

Graduates: Yearly at least 92% of our graduates and their parents choose one of the following Catholic Schools for their secondary education:

Seton Hall Prep, St. Peter's Prep,
Essex Catholic, St. Benedict's Prep,
Mount St. Dominic, Marylawn of the Oranges, Benedictine Academy,
Lacordaire, Immaculate - Montclair,
Queen of Peace - North Arlington,
St. Vincent Academy, Good
Counsel, St. Mary's - Rutherford.

Since 1982

- ★ at least one graduate a year has received a high school scholarship
- ★ 56 graduates have been involved in high school sports programs
- ★ 300 students have graduated and 200 of them have been involved in honors programs or courses in both Catholic and Public high schools (such as model UN, Ambassador at large, Peer Minister)
- Ten have been placed in special education programs

Tuition Facts: Available upon request. Call 759-3143
Registration: March 1, 1990
for 10:00 a.m. - 1:00 p.m. School Library
1990 - 1991 Grades PK - 5, 8
Enrollment 6, 7 closed.

The Catholic School Advantage
Education plus
JOIN US!



Andrea Lyn Cammarato.

named to the Caldwell College fall semester Dean's List. Both students are juniors at the school.

Cancer phone line

The American Cancer Society has a toll-free Answer Line.

The service provides information for patients, families and the general public on all aspects related to cancer, including causes, prevention, detection, treatment, and patient services.

To reach this service, call 800-ACS-2299 a.m. to 5 p.m., Monday through Friday.

MARK D. MARYANSKI
ATTORNEY AT LAW

Real Estate Closing FEES:

Purchase\$475.00

Sale\$375.00

Refinance\$375.00

• Automobile Accidents

• Fall Damages

• Workers Compensation

• Variances and Subdivisions

• Bankruptcy

• Wills

FREE INITIAL CONSULTATION

(201) 680-9800

372-B Broad Street

Bloomfield, N.J. 07003

(Entrance on Pitt Street)

KITCHENS by Versa



Beautiful, Practical and Affordable!

VISIT OUR SHOWROOM OR CALL

FOR A FREE IN-HOME ESTIMATE

Dinner For Two At Our Expense With The

Purchase Of A Kitchen In Excess Of \$1000.00

VERSA SUPPLY COMPANY

30 West Ave., Newark, N.J.

Tel: 589-3355

Serving the Homeowner Since 1968

Keegan appointment

(continued from page 1)

politics the way old craftsmen came to their trades, as a birthright handed down from father to son.

In fact, his father was Francis (Pinky) Keegan, the Democratic Deputy Mayor of Newark under Mayor Leo Carlin.

Still, that Democratic Party was different than the one existing today.

"They were the kind of days when you had neighborhoods, associations, Elks Clubs," Keegan said. "You didn't have this tremendous media."

But even with the media you have to get out there and talk to people, so besides going to Trenton, he will be crisscrossing the state working to build up Democratic control of municipal and county governments, he said, and hopefully by doing that a larger base for the legislative contests in 1991.

Before he gets to that though, he will be trying to find a permanent address for the state committee so he will have a place to meet the workers and faithful trooping to Trenton to see him about campaign funds, committee appointments, legislation and the various other things that go with heading up the party in power. As things stand they have less than 40 days before they have to leave their West Lafayette Street address.

When that order of business is taken care of, Keegan said he can begin positioning the party for 1991. Most observers feel that while that task may be easier now there is a major problem in that the Republicans, as of 1988, controlled the executive positions in 16 of the state's 21 counties.

But Keegan brings an impressive political background to the chores he confronts. In 1966 he was selected as one of the Ten Young Democrats in the United States by the National Democratic Committee. In 1972 he became a member of the bi-partisan American Council of Young Political Leaders, Washington, D.C. and in the early 1970s served on the Essex County Board of Chosen Freeholders and as a state Assemblyman in 1974 and 1975. In 1985 he joined the state Democratic Committee, the group he now chairs.

Keegan is also president of PMK, Ferris and Perricone, Inc., an environmental engineering firm, was a board member of the New Jersey Concrete Institute from 1970 to 1975, serves with the American Society for Testing Materials, is on the Advisory Board of the National Westminster Bank and is on the Board of Trustees of the New Jersey Institute of Technology.



LIKE FATHER, LIKE DAUGHTER - John Byrne and his 18-month-old daughter Christine enjoy the spring-like weather at the Recreation House playground. (Photo by Anthony Buccini)

Orechio bill advances to promote role of local fire inspectors

A Senate committee Monday approved a bill sponsored by Senator Carmen A. Orechio, D-Essex, to clarify that inspections of local government and school facilities are the primary responsibility of local, not state, fire inspectors.

"It was never the intention of the revised state fire code to have local inspectors replaced by state inspectors," Senator Orechio said.

"This bill restores and makes certain the intent of the Uniform Fire Safety Act of 1983."

The bill, S-1944, was approved 4

to 0 by the Senate County and Municipal Government Committee, which Orechio chairs.

Senator Orechio noted state inspectors from the Department of Community Affairs are responsible for inspection of state-owned facilities.

The measure awaits action in the Assembly.

The bill was approved without objection by the Senate during the previous legislative session, but was never posted for a vote in the Assembly.

Essex agency seeking volunteers for the elderly

The Friend Advocate Program is seeking volunteers to work with frail, needy seniors in Essex County. Volunteers aged 18 plus will be trained to use their skills in providing friendship and advocacy for independent seniors living in the community. Help a nearby senior obtain entitlements, pay bills, shop,

read mail, organize insurance matters or arrange other support services 1-2 hours a week.

Training will be held Feb. 26 from 6:30 to 8:30 p.m. at the Community Health Lab Project, 7 Glenwood Avenue, East Orange. Interested persons should contact Julie Caruso at 672-6073.

EIGHT CICCOLINI BROS. PRESENTS:



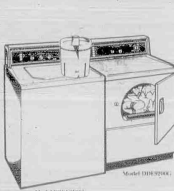
Buy ANY GE Appliance

Feb. 15 through Feb. 25, 1990...

150 days same as cash.

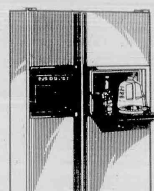
NO PAYMENTS REQUIRED!
For qualified applicants financing under the GE/C.C. Revolving Charge Plan. No finance charges will be assessed if purchase amount paid within 150 days, or monthly payments can be made after 150 days, with finance charges of 11.99% APR (All conditions not included.)

Most Advanced GE Appliances—VALUE PRICED!



Model 17X1700
OUR EXTRA LARGE CAPACITY 3-IN-1 WASHER AND AUTOMATIC DRYER MAKE WASH DAY A BREEZE!

You can't find a more versatile washer than our SPYTRON 3-IN-1 WASHER— with extra large capacity tub for family size loads, a mini basket for smaller loads and delicate, and our Spentrol™ System that gets out tough stains without pre-soaking or scrubbing by hand. And you will love this 6 cycle dryer with 4 drying preferences—it was designed with today's fabrics in mind.



Model 17X271
OUR SPACEMAKER 27 IS THE LARGEST SIDE-BY-SIDE REFRIGERATOR MADE! YET IT'S LESS THAN 30" WIDE!

It has a huge 35.7 cubic feet inside. More space than any other side by side. Its door holds gallon jugs of milk, 3 liter bottles and 8 packs. It makes ice and delivers crushed ice, cubes, or cold water through the door. It even has a Refrigerator Control door that lets you get your favorite sodas and snacks from the inside without opening the refrigerator door.



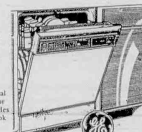
Model 17X271 (Gas)
Model 17X271 (Electric)

GOOD LOOKIN' GREAT COOKIN' OVEN RANGES IN GAS OR ELECTRIC—AND THEY CLEAN UP AFTER THEMSELVES! Self-cleaning oven ranges that make cooking easy, with black glass cook tops and electronic digital clocks, automatic oven timers, fluorescent cooktop lights, and wash-high, in-oven burners.



Model JE1465
1.4 cu. ft. oven cavity. Electronic digital display with clock. Touch to open door latch. Most Promising Display provides programming instructions. Fast Cook 1 & 2, Temp Cook Hold, Auto Cook, Auto Defrost, Auto Reheat and Auto Reheat, Shift.

Deluxe Microwave Oven



Model GSD2800
11 performance monitoring programs. Inverter full warranty on Permanent Insulation and door liner for details. Temperature Sensor System. Delayed start option.

Potscrubber Cycle Dishwasher

COME IN FOR LOW, LOW HOLIDAY PRICES!

GE REFRIGERATOR SPECTACULAR



GE 17.4 CU. FT. NO-FROST FOODSAVER REFRIGERATOR

4.4 cu. ft. freezer equipped for optional automatic icemaker. 2 full-width door shelves, one holds six-packs. Glass shelves. 2 vegetable/fruit pans.

SPECIAL HOLIDAY PRICES!



Model 17X271
GE 18.5 CU. FT. NO-FROST FOODSAVER REFRIGERATOR

1.5 cu. ft. freezer with 2-position compartment shelf. Equipped for optional automatic icemaker. 2 covered dairy compartments. 3 door shelves—one holds 2-liter bottles. Adjustable shelves.



Model 17X271
GE 21 CU. FT. NO-FROST FOODSAVER REFRIGERATOR

1.5 cu. ft. freezer with 2-position compartment shelf. 4 adjustable wire shelves. Equipped for optional automatic icemaker. 3 door shelves—one holds six-packs and 2-liter bottles.



Model 17X271
GE 21 CU. FT. NO-FROST FOODSAVER REFRIGERATOR

1.5 cu. ft. freezer with 2-position compartment shelf. 4 adjustable wire shelves. Equipped for optional automatic icemaker. 3 door shelves—one holds six-packs and 2-liter bottles.



Model 17X271
GE 21 CU. FT. NO-FROST FOODSAVER REFRIGERATOR

1.5 cu. ft. freezer with 2-position compartment shelf. 4 adjustable wire shelves. Equipped for optional automatic icemaker. 3 door shelves—one holds six-packs and 2-liter bottles.

the eight ciccolini bros. inc.
537 Franklin Avenue • Nutley
201-661-2100

A-1 NUTRITION STORE

377 Centre Street, Nutley, N.J.

February 12, 1990

You are cordially invited to join in the opening celebration of A-1 NUTRITION. We're feeling happy and excited about this new endeavor and we want to share it with you.

For the past 13 years we have owned and operated a health food store on Main Avenue in Passaic Park. Coming to Nutley is like coming home.

My husband, Don and I have lived in Nutley for almost 50 years and have raised our family here, and over 50 years ago, my parents, Vincent and Mary LoCurcio came to Nutley and opened the Park Food Market on Franklin Avenue. Opening a health food store here follows a tradition we're proud of and we are privileged to serve a community we care about.

We are grateful to all who have helped us reach our achievements and we promise to help you in achieving a Better Way of Life. (This just happens to be the title of Og Mandino's new book). This is a commitment we take seriously and we accept the responsibility happily.

B WELL

Gloria

P.S. Join the fun. Come and meet manager, Nancy, our No. 1 child and Sue, her assistant—both capable and caring. Free samples, tastings, literature and sales, sales galore.

DRINKS ON THE HOUSE!!!

Enter our drawings for free gift certificates. Free Radon Detection Kit with \$50.00 Purchase.

EVENTS IN THE AREA

Fairs, flea markets, rummage...

Flea market, crafts, baseball cards, 9 a.m. to 5 p.m. Feb. 18, Sacred Heart Social Center, 655 Valleybrook Ave., Lyndhurst. A school fundraiser. 100 tables.

Rummage sale, sponsored by Ladies Aid Society, 3 to 8 p.m. Feb. 22, 9:30 a.m. to 2 p.m. Feb. 23, Belleville Reformed Church, Main and Rutgers streets.

Craft show, flea market, 9 a.m. to 4 p.m. March 3, 4, St. Clare's Parish Center, 69 Allwood Road, Clifton. For information, call 777-7588 or 779-7545.

Fundraisers...

Hawaiian luau, sponsored by St. Peter's PTG, 7:30 p.m. Feb. 17, school auditorium. Buffet, beer, soda, music, complimentary lei. \$20. Call Kathy at 351-8000 days; Marianne at 751-6857 evenings or Pat at 484-2977 anytime.

Valentine dinner dance, 7 p.m. Feb. 17, American Legion Post 70, 45 Franklin Ave., Nutley. \$12. Entertainment by Jolo Russell. For tickets, call 235-9663 after 8 p.m., Lenny Nick at 235-1433, June at 251-5752 after noon.

Spaghetti and meatball dinner, sponsored by Nutley Chapter 121, Order of Eastern Star, 4 to 7:30 p.m. Feb. 17, Mason Temple, Chestnut St. Adults, \$4, children under 12, \$2.50. Tickets may be purchased at the door.

Annual pancake and sausage breakfast, sponsored by ladies auxiliary, 9 a.m. to noon, Feb. 18, Nutley Elks, Chestnut St. Adults, \$5; children 8 and under, \$3. For tickets, call Lucille Mulligan at 667-0890 or Dolores Postlewhite at 696-3072.

Matinee Bunco, 2:30 p.m. Feb. 18, Essex County American Legion Auxiliary, 45 Franklin Ave. Coffee and dessert, \$4. For reservations, call Betty Doeffinger at 759-7254 or Joan McCarthy at 751-4180.

Card party, 8 p.m. Feb. 22, Nutley Woman's Club, 216 Chestnut St. \$4. For tickets, call 661-2920 or 284-0831.

Fish and chips dinner, Feb. 23, Grace Episcopal Church, 200 Highfield Lane, Nutley. Catered by Argyle of Kearny. Table service, \$5 to 7:30 p.m.; takeout available 5 to 6 p.m. Adults, \$8; children under 12, \$5. For information and tickets, call the church office at 235-1177 or Marilyn Peters at 661-5219. All welcome.

Chinese auction, sponsored by Clifton Woman's Club, 7 p.m. Feb. 23, Nutley Italian-American Club, 642 Franklin Ave. \$5. Dessert and coffee. Proceeds to Eye Institute, Newark. For more information, call 758-5536.

Annual Carnevale night, sponsored by women's auxiliary, Nutley Italian-American Association, 7 p.m. Feb. 24, 642 Franklin Ave. \$20. Hot and cold buffet, refreshments. For tickets or information, call Mary Romagnoli at 667-1473.

"The Wizard of Oz," 8 p.m. Feb. 24, 3 p.m. Feb. 25, Sacred Heart School auditorium, 683 Bloomfield Ave., Bloomfield. \$5 for adults, \$3 for children when accompanied by adult. Tickets available at Sacred Heart Rectory, 76 Broad St.

Mayor's Charity Ball, 6 p.m. Feb. 25, Wayne Manor, Route 23, Wayne. Open bar, hors d'oeuvres, prime rib dinner. Black tie optional. / For more information, call the mayor's office at 680-4077.

Gala Carnavale, Feb. 26, Biase's Restaurant, Park Avenue, Newark. \$30. Dan and Sarah Andrews of Bloomfield will be crowned king and queen. For tickets, call Paul Alongi at 428-8080 or Dan Andrews at 743-4314.

Fish and chip dinner, sponsored by Rosary Society, March 2, St. Mary's Church, 17 Msgr. Owens Place, Nutley. \$7.50. Takeout available. Catered by Argyle of Kearny. For tickets, call 667-7034, 667-8698 or 667-6268. No tickets sold at the door.

Fashion show, sponsored by Elks ladies auxiliary, 7:30 p.m. March 2, Elks Lodge, 242 Chestnut St. \$7. Fashions by Patti's Fashion Corner of Bloomfield. For reservations, call Gilda Mascolo at 235-1069 or Antoinette Frese at 661-1542. Proceeds to charity.

Chinese auction, 7:30 p.m. March 9, Franklin School, 85 Curtis St., Bloomfield. \$8. Doors open at 7 p.m. For tickets, call Derna Gianetta at 743-3094 or Judy Cervone at 748-2579.

Murder Mystery night, sponsored by Radcliffe School PTA, 7:30 p.m. March 9, Nutley Elks, Chestnut St. \$30 includes dinner. For more information, call Joyce Giglio at 667-4957.

St. Patrick's Night dance, sponsored by Clifton Irish American Association, 8 p.m. March 10, St. Clare Parish Center, 69 Allwood Road, Clifton. \$20 includes corned beef dinner. BYOB. Music by Maura Fogarty Band. For information, call 365-1739, 779-2106, 340-2613 or 340-9026.

Fish and chip dinner, sponsored by Louise Palagano and friends, 6 to 7:30 p.m. March 23, Bloomfield Civic Center, 84 Broad St., Bloomfield. \$8. For tickets, call Celeste Roppolo at 748-0297 after 5 p.m.

2nd annual pasta night, sponsored by Bloomfield Kiwanis Club, 5 to 8 p.m. March 31, Bloomfield Middle School, 60 Huck Road. \$8.50. Members have tickets. Proceeds to charity.

Volunteers needed to work at Chinese auction to raise funds for Nutley Public Library furnishings. To volunteer, call Mrs. Eugene DePanici at 667-2553.

6th Annual Champagne Brunch, sponsored by Historic Restoration Trust, 11:30 a.m. to 1:30 p.m. March 4, the Palace, Kings Court, Lyndhurst. \$22 for adults, \$16 for children under 12. Proceeds to restoration of Kingsland Manor. Checks payable to Historic Restoration Trust should be sent to D.J. Eisenfelder, 51 Enclosure, Nutley, 07110.

ENTERTAINMENT '90 BOOKS for sale now. St. Mary's School, Nutley, Debbie Mowad at 667-5081 or the school at 667-0801; Men's Club of Congregation Ahavath Achim, Belleville, 759-9394; Court Gratia 751, Mary Joyce at 661-2753; Boy Scout Troop 301, Belleville, Jay Meglio at 759-3590 after 5 p.m.; Bloomfield High School Future Business Leaders of America, 680-8507; Holy Name Society, Sacred Heart Church, 748-0655 or at Brookside Garden Center, Bloomfield.

Other events...

Free health screenings, Montclair Community Hospital, 120 Harrison Ave., Montclair. Feb. 17: breast, hernia, Dr. Stanley Fieber; Feb. 24: eye problems, Dr. Anthony Origieri; Feb. 15: knees, Dr. Cornelius Nicoll. To make an appointment, call 744-7300, ext. 4296, 10 a.m. to 2 p.m. daily.

Nutley Adult School registration, 7 to 9 p.m. Feb. 15, Nutley High School, 300 Franklin Ave. Classes start March 5. Seventy four courses offered.

Friend Advocate program volunteer training session, 6:30 to 8:30 p.m. Feb. 26, Community Health Law Project, 7 Glenwood Ave., East Orange. To work with frail, needy seniors in Essex County, call Julie Caruso at 672-6073.

Arthritis fitness program, eight week course beginning March 6, Montclair Community Hospital, 120 Harrison Ave., Montclair. \$20. Pre-registration required. Call 744-7300, ext. 4312.

Babysitting course, sponsored by Clara Maass Medical Center and Tri-Town BPW, 10 to 11:30 a.m. four consecutive Saturdays, beginning March 10, Greifinger Lecture Hall, medical center. Free. Pre-registration required by Feb. 19, 13 and over. For application, call 450-2150 or 450-2091.

Police volunteer training course, 6:30 to 8:30 p.m. March 12 and following nine Mondays. For information, call Honi Weiss at 783-7879.

Retirement dinner for Mr. Gallobarbo, 2 p.m. March 16, Chanticleer, Belleville. \$30. For tickets, call Jackie DeBenedetto at 759-6872 or Annette DeRiggi at 751-8504.

Country music bus tour to Tennessee, sponsored by Bloomfield Knights of Columbus and Columbiettes, April 22 to 30. \$525 per person double occupancy. Cost includes bus, eight nights lodging, some attractions including Graceland tour, four hour cruise, night at Grand Ole Opry. For reservations, call Rose Ruffalo at 743-8668. Limited seats available.

Vietnam Veterans of America forming a chapter in West Essex/Morris County. To join, you must have served in the military from 1964 through 1975. Call Richard Ventola at 228-5024 evenings or Tony Dellanno at 403-1974.

Tour of Ireland, sponsored by Nutley Irish American Assoc., July 10 to July 20, 1990. First class hotels (twin occupancy), full Irish breakfast each day, six dinners plus medieval banquet. Land package is \$789 per person plus \$499 approximate air fare if booked before Feb. 28. For more information, call Cheryl at 661-3200, ext. 225; Ed Cavanagh at 667-4519 or Tom Cusick at 667-2907.

Support groups...

New Jersey Chapter of NAAFA, (National Association to Advance Fat Acceptance), 7 to 10 p.m. Feb. 15, Rutherford House, Rt. 17, East Rutherford. For more information, call 667-2957 or write P.O. Box 110203, Nutley, 07110.

GLADD Kids (Guiding and Loving Attention Deficit Disorder Kids) Parent/Professional Support and Information Network, free workshop, "The Impact of ADD on the Marital Relationship," 7:30 p.m. Feb. 15, Vincent United Methodist Church, 100 Vincent Place, Nutley. For more information, call 235-0942.

Alzheimer's Disease Family Support Group, 7:30 p.m. Feb. 22, Park Manor Nursing Home, 23 Park Ave., Bloomfield. For more information, call Kathleen Little at 743-7772.

Essex County Home Schoolers, a support group for parents educating their children at home or considering doing so. For more information, call 284-1641.

Overeaters Anonymous, self-help group for compulsive overeaters or people with eating disorders, 8 p.m. Tuesdays, Bethany Lutheran Church, New and Joralemon streets, Belleville. For more information, call 759-0770; 8 p.m. Wednesdays, Christ Church, Park and Bloomfield avenues (opposite Grand Union), Bloomfield. For more information, call 746-4658.

Living with Cancer, for cancer patients and their families, 7 to 8:30 p.m. second Wednesdays, Mountainside Hospital, Montclair. 429-6140 or 429-6128.

Recovery Inc., a community mental health self-help group for persons who suffer from nervous symptoms and fears, 7:30 p.m. Wednesdays, Parks Dept., 44 Park Ave., Nutley. For free literature, call 766-7466.

Make Today Count, a support group for patients and families dealing with cancer and other life-threatening illnesses, 7 p.m. Mondays, Clara Maass Medical Center, Belleville. 450-2230.

UNHOOKED, for drug and alcohol abuse. Call 643-5050 noon to 7 p.m. Monday through Friday for New Jersey treatment referrals and substance abuse information. Confidential.

New Jersey POISON INFORMATION Education System hotline: 1-800-962-1253. NJPIES is equipped with a computer system that contains information on drugs and chemicals involved in poisoning incidents and can give immediate instructions on what to do. If necessary, you will be referred to an emergency room or private physician.

SOCIAL SECURITY 24-hour toll free number, 1-800-2345-SSA (1-800-234-5772). Live operators on duty 7 a.m. to 7 p.m., Monday through Friday. After 7 p.m., before 7 a.m., weekends or holidays, leave your name and number and someone will call you back.

Cancer Response System, a toll-free answer line providing information on all aspects of cancer. 1-800-ACS-2345, 9 a.m. to 5 p.m. Monday through Friday.

New Jersey Eating Disorders Hotline, for anyone suffering with anorexia nervosa, bulimia or compulsive eating problems, 1-800-624-2268.

Parents Anonymous support group, 10 a.m. to noon, Wednesdays, F.O.C.U.S., 443 Broad St., Newark. Bilingual child care available. For more information, call 1-800-843-5437.

Bereavement support groups for adults, sponsored by Hospice Inc., 34 Label St., Montclair, Wednesday evenings, Jan. 24 through March 28. Call 783-7879 to sign-up. Also available, on-going children's art therapy groups and newly formed teen group for ages 12 to 17. For more information, call the above number. Conducted by professionals. No charge.

KIDS, 7:15 p.m. Monday and Friday, KIDS Center for treatment of adolescents and young adults with compulsive behavior problems. Call 342-KIDS for information.

Alzheimer's Family Support Group. For more information, call group leader Kathleen Little at 743-7772.

Families Anonymous, for relatives and friends concerned about the use of drugs or related behavioral problems, 7 p.m. Wednesdays, Episcopal Church of the Holy Spirit, 36 Gould St., Verona. For more information, call 228-0090.

For singles only...

O.N.E.S., 12:30 p.m. Feb. 18, Bethany Presbyterian Church, West Passaic Ave. and High St., Bloomfield. Instructions in line dancing after lunch. Donation of \$4 or casserole, salad or dessert of equal value for the buffet. Mature singles of all faiths welcome. For more information, call 338-7692.

Social dancing, 7:30 to 11:30 p.m. every Friday, Franklin Reformed Church, 45 Hillside Crescent, Nutley. For more information, call 284-0639 after 5 p.m.

The Singles Connection, single, widowed, divorced, separated, first and third Thursdays, 7:30 to 10:30 p.m., Grace Episcopal Church, 200 Highfield Lane, Nutley. Rap groups, music, dancing. \$5. Wine, soda, snacks and dessert served. For more information, call 235-1177.

Young Adult Singles, 7 p.m. Tuesdays, Sacred Heart School, Valleybrook Ave., Lyndhurst. 23 to 40. For more information, call Janice at 759-9194.

Essex County Chapter of Widows and Widowers, 8 p.m. second Tuesdays, Reflections Hall, Hillside. All ages. For more information and directions, call 751-3015.

New Jersey Moonrakers, for tall adults, 8 p.m. second Tuesdays, Meadowlands Hilton, 2 Harmon Plaza, Secaucus. Dancing and socializing following meeting. \$3. For more information, call 822-0362.

Ballroom dancing, 7:30 to 11 p.m. Friday nights, 561 Franklin Ave., Nutley. No age limit. \$5. For more information, call 677-2944.

(To be included in this column, items must reach us by 3 p.m. the Friday preceding publication. Sorry, no exceptions and no items taken after the phone. Limited to Belleville, Bloomfield, Nutley primarily. Other towns included only if space permits. No charge. Questions? Call Helen Maguire at 667-2100. Mail to Orechio Publications, Events in the Area, 800 Bloomfield Ave., Nutley, 07110.)

Experience the
Charm of Lancaster,
Harrisburg, and
Hershey

Marriott's Two
For Breakfast
Weekend
starting at

\$69*

per night
not per person

Make the most
of your weekend
at the Harrisburg
Marriott.

To start, complimentary
breakfast for two
is included the morning
of your choice.
Then get ready to
begin your weekend
adventure, because
the hotel is located just
minutes from the
area's most interest-

ing attractions, including: **Hershey Park**, the world famous amusement park; **Chocolate World**, offering an introductory look at how chocolate is made (join on attending a magical Christmas at Hershey); **Indian Echo**, one of the largest limestone displays in North America; **Lancaster**, heart of the picturesque Dutch Amish country; **Gettysburg**, site of one of the most decisive battles in American history; the **State Capitol's** historic sites and much, much more.

After a busy day of sight-seeing, enjoy a luxurious guest room and free use of our indoor/outdoor swimming pools, health club, whirlpool and sauna. Then be sure to stop by our first class restaurant, **Ashley's**, and enjoy live entertainment six nights a week in **Caboots**.

A wonderful weekend is waiting for you at the Harrisburg Marriott.

For reservations call toll-free (800) 343-5982 or (717) 564-5511.

*Not including tax and gratuities. Offer expires March 30, 1990.

HARRISBURG **Marriott**
HERSHEY

4650 Lindle Road • Harrisburg, Pennsylvania 17111

51% OF NEW
HOMEOWNERS
NEED THE
SERVICES OF
A LAWYER...

... That's what they told us in a recent survey. We're Getting To Know You, the experts in welcoming new households in communities across the nation. If you would like new homeowners in your area to have your name and address in their personal address book, become a Getting To Know You sponsor. We're in our third decade of helping professionals and merchants welcome new families effectively, exclusively and with dignity.



GETTING TO KNOW YOU
WELCOMING NEWCOMERS NATIONWIDE
To become a sponsor, call (800) 645-6376
In New York State (800) 632-9400

**POWER 36, OBC-TV
FITNESS GIVEAWAY**

Win A Free One Year Unlimited Membership At
RAQUETBALL PLUS
Health & Fitness Center
83 River Drive, Garfield, NJ

Contest starts February 1 and ends April 11, (10 weeks)
One winner will be announced every Friday on OBC-TV at 6 PM

You can obtain your entry forms at the following locations:
(no obligation, no purchase necessary)

D'ALLESIO IMPORT & EXPORT, 510A Franklin Ave., Nutley	235-0076
ALGERI'S PIZZA, 500 Union Ave., Belleville	751-3577
APM FOOD STORES, 1109 Broad Street, Bloomfield	338-3665
TODAY'S FASHION, 46 Lexington Ave., Passaic	472-2177
MICKEY MUSIC, 200 Main Ave., Passaic Park	773-5051
VILLAGE SHOP 4 LESS, 1A Village Square, Botany Village, Clifton	478-0209
BROOKWOOD LIQUOR & DELI, 545 Boulevard, Elmwood Park	756-9818
PHOTOGRAPHY PLUS FILM LAB WEDDING STUDIO, 800 River Drive, Garfield	772-1102
GOLD & DIAMOND OUTLET, Courtyard Mini Mall, Main St., Lodi	473-3929
CLASSIC OCCASIONS, 159 Boulevard, Hasbrouck Heights	393-4807



Mr. and Mrs. Anthony Calabrese — nee Jeanne Marateo

Jeanne Marateo bride of Anthony Calabrese

Wedding vows have been exchanged by Jeanne Marie Marateo, daughter of Mr. and Mrs. Ernest Marateo of Orange, and Anthony Calabrese, son of Mrs. Josephine Calabrese of Belleville and the late Joseph Calabrese.

Rev. Dante Di Girolamo celebrated the nuptial Mass in St. John's Church, Orange. A reception followed at Friar Tuck Inn, Cedar Grove.

The bride, escorted by her father, wore a white satin gown appliqued with lace and pearls.

Marion Marateo of Orange, sister-in-law of the bride, was the matron of honor. Michael Calabrese of Belleville served as his

brother's best man.

Mrs. Calabrese, an alumna of Our Lady of the Valley High School, Orange, is an executive secretary with The Prudential, Newark.

Mr. Calabrese, a graduate of Belleville High School and New Jersey Institute of Technology, Newark, earned an MBA from Fairleigh Dickinson University, Rutherford. He is a manager, Group Systems, The Prudential, Roseland.

The couple honeymooned in Hawaii following the Sept. 23 nuptials and have made their home in Nutley.

Joanna Martorano, Thomas Martine to wed

Mr. and Mrs. John Martorano of Paterson announce the engagement of their daughter, Joanna, to Thomas Martine, son of Mr. and Mrs. Paul Martine of Belleville.

The troth was announced in Maui, Hawaii. The wedding is planned for September of 1991.

Miss Martorano, an alumna of Clifton High School, is a travel coordinator with Vital Signs, Totowa.

Mr. Martine, a graduate of Belleville High School and Embury-Riddle University, Florida, is a pilot with Continental Airline.



Joanna Martorano — Thomas Martine

STORK CLUB

Victor Manuel Silva

A third child, a son, Victor Manuel, was born to Mr. and Mrs. Victor Silva of Belleville Jan. 23 at Clara Maass Medical Center, Belleville. Birth weight was 7 pounds, 15 ounces. He joins Stephanie, seven and Krystina, four.

Mrs. Silva is the former Laura Reidy, daughter of Mr. and Mrs. Lawrence Reidy of Kearny. Mr. Silva, son of Mr. and Mrs. David Delesus of Newark, is a self employed mason with David & Sons.

Nicolette Castelli

A first child, a daughter, Nicolette, was born to Mr. and Mrs. Jimmy Castelli of Nutley Jan. 22 at St. Joseph's Hospital. Birth weight was 6 pounds, 8 ounces.

Mrs. Castelli is the former Michele Alfano, daughter of Mr. and Mrs. Frank Alfano of Toms River. Mr. Castelli, son of Mr. and Mrs. Robert Castelli of Belleville, is a chemical operator with Hoffmann-LaRoche, Nutley.

AnnMarie and Amanda Algieri

Twin daughters, AnnMarie and Amanda, were born to Mr. and Mrs. William Algieri of Nutley Jan. 8 at Mountainside Hospital, Montclair.

Mrs. Algieri is the former Debra Malato, daughter of Mr. and Mrs. Peter Malato of Belleville. Mr. Algieri is the son of Mr. and Mrs. Fred Algieri of Nutley.

Jacki Lin Amaral

A second child, a daughter, Jacki Lin, was born to Mr. and Mrs. Jose Amaral of Bloomfield Feb. 1 at Clara Maass Medical Center, Belleville. Birth weight was 8 pounds, 9 ounces. She joins Jamie Leigh, 18 months.

Mrs. Amaral is the former Jackie Dragotto, daughter of Mr. and Mrs. Peter Dragotto of Belleville.

Lindsay Elizabeth Ferrara

A second child, a daughter, Lindsay Elizabeth, was born to Mr. and Mrs. Scott Ferrara of Belleville Feb. 6 at St. Barnabas Medical Center, Livingston. Birth weight was 8 pounds, 15 ounces. She joins Ashley, two.

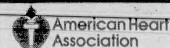
Mrs. Ferrara is the former Daria Christiansen, daughter of Arnold Christiansen of Laguna Beach, Calif. and Annita Christiansen of Las Animas, Col. She is with Midlantic Commercial Corp. Mr. Ferrara, son of Veronica Ferrara of Bloomfield, is a limousine driver. Great grandparents are Arnold Christiansen Sr. of Sioux City, Iowa, Nona Smith of Las Animas and Joe Morrow of Bloomfield.

Daniel Vincent Wendaur

A first child, a son, Daniel Vincent, was born to Mr. and Mrs. Mark G. Wendaur of Kearny Feb. 2 at Clara Maass Medical Center, Belleville. Birth weight was 6 pounds, 2 ounces.

Mrs. Wendaur is the former Mary Ann Yuknals, daughter of Mr. and Mrs. Joseph Yuknals of Belleville. Mr. Wendaur, son of the late Mr. and Mrs. Timothy Wendaur, is a technical representative with Mita Copystar America, Inc.

Volunteer.



WILLIAM H. NORTON

NORTON INSURANCE AGENCY, INC.
For All Your Insurance Needs



Highest
Standards of
Professional Service

369 BROAD STREET, 2nd FLOOR
BLOOMFIELD, NJ 07003
TEL.: (201) 429-7034

FREE BRIDAL SHOWCASE OF BANDS!

WEDNESDAY, FEBRUARY, 21
AT THE GONDOLA IN NUTLEY

•JAZZ •TOP 40
•OLDIES •ROCK
•MOTOWN •CLASSICAL

FEATURING
DYNASTY ORCHESTRAS
Call For FREE Reservations
(201) 985-7577



Mr. and Mrs. Joseph Colella — nee Lisa Ann Rocas

Lisa A. Rocas engaged to marry Joseph Colella

Lisa Ann Rocas, daughter of Mr. and Mrs. Joe Rocas of Belleville, became the bride Nov. 18 of Joseph Colella, son of Mr. and Mrs. Joe Colella of Rivervale.

Rev. Ransom performed the ceremony in St. Mary's Church, Nutley. A reception followed at Landmark II, East Rutherford.

Escorted by her mother, the bride wore a white satin sheath gown accented with sequins and pearls and fashioned with a high neckline and cathedral train trimmed with organza. A sequin, pearl and rhinestone crown held her veil.

Tricia Libertell of Belleville was maid of honor. Bridesmaids included Annemarie Glunk of Belleville, Anna Murano of Carlstadt, Janine McNally of Hillsdale, Michele Nemeth of Cedar Grove and Dana Colucci of New York. Flower girls were Jackie of Paterson and Nicole

of New York.

They were attired in red velvet sheaths accented with taffeta.

John-Michael Vomero of Queens, N.Y., served as best man. Ushering were Michael Rocas and Pete Dasaro of Belleville, Sean McNally of Hillsdale, Vincent Vomero of New York and Frank Garufi and Sam Garufi of Howard Beach.

Mrs. Colella, a Belleville High School alumna, is an executive secretary with Unitemp Inc., Fairfield.

Mr. Colella, a graduate of Pasack Valley High School, attended Rockland Community College. He is in credit and collections with Hygrade Printing, West Caldwell. The couple honeymooned in Aruba and have made their home in Bloomfield.

Sisterhood Sabbath Weekend Feb. 23, 24 at Ahavath Achim.

Sisterhood of Congregation Ahavath Achim of Belleville will hold its Sisterhood Sabbath Weekend Feb. 23 and 24. A sabbath supper will be served 6:30 p.m. Feb. 23 in Sisterhood Hall at the synagogue, followed by Sisterhood sabbath services 8:30 p.m. in the chapel.

Following the services, an Oneg Shabbat will be hosted by Mrs. Bessie Denner in honor of her 83rd birthday.

Sisterhood officers and members will take part in the services Friday night and in sabbath services 9 a.m. Saturday morning. A luncheon Kiddush hosted by Mrs. Denner will follow Sunday services.

Mrs. Frieda Berkowitz is chair-

person for the sabbath supper.

Sisterhood officers include Bessie Denner, Frieda Berkowitz, Clara Creditor and Hannah Persico, president; Anna Beilin, financial secretary; Leona Schreier, recording secretary; Janet Fuchs, corresponding secretary and Estelle Zohn, treasurer.

Creditor is president for the month of February and will present a personal report from "Mother Russia" during Friday night services. Rabbi Kenneth Simkes is spiritual leader of the congregation.

For more information, contact the synagogue at 759-1182 or 759-9394.

ADVERTISE!

MEDICALLY SPEAKING

HOARSENESS

- Q: What is hoarseness?
A: Hoarseness is an alteration in the normal production of the voice by the vocal cords.
- Q: What are the causes of hoarseness?
A: Most cases are caused by infection (laryngitis). Some others are related to voice abuse, environmental exposure, or smoking, which can cause vocal cord nodules and polyps.
- Q: Who should have an examination by a throat specialist?
A: Anyone who has hoarseness persisting for two weeks.
- Q: Have there been recent advances in the diagnosis of hoarseness?
A: Yes. With the FLEXIBLE FIBEROPTIC LARYNGOSCOPE, a complete examination of the voice box can be done in the office without discomfort.
- Q: What if I need surgery?
A: Surgery can be done under general anesthesia on an outpatient (same day) basis. All removed tissue is sent for a biopsy study. Modern techniques such as the OPERATING MICROSUPE and, in indicated cases, LASER, allow accurate and precise surgery. Recovery is rapid with patients able to resume most activities the next day.

MEDICAL & SURGICAL EAR, NOSE & THROAT GROUP

John A. Coss, M.D.
Bruce E. Gordon, M.D.
Arthur I. Lester, M.C.

6 Franklin Avenue
Bloomfield, N.J.
759-4005

562 Kingsland Street
Nutley, N.J.
236-1400

1001 Clifton Ave
Clifton, N.J.
777-5151

RALPH J. PALUMBO

CERTIFIED PUBLIC ACCOUNTANT

- Taxation
- Estate Planning
- Retirement Plans
- Insurance
- Investments
- Business & Personal

For Appointment Call
661-3821

Four Ways You'll Save at Grand Union!

1. Everyday Low Prices!
2. Red Dot Specials!
3. Unadvertised Red Dot Specials!
4. Super Coupons!

354 MAIN AND JORALEMON AVE., BELLEVILLE • OPEN 24 HOURS • STORE DIAL 759-1750

U.S.D.A. Grade 'A' Fresh
**Perdue Chicken
Leg Quarters**

with
Portion
of Backs

57¢

Lb.



Significant Source of Vitamin C

**Fresh
Broccoli**

Large
14 Size

Bunch

99¢

Super **GRAND UNION** Coupon

(601)

Chunk Style - In Oil or Water
**Chicken of the
Sea Light Tuna**

One
6.5-oz. Can

48¢

No Minimum Purchase Required With This Coupon. Good
Feb. 11 Thru Feb. 17. Limit One Coupon Per Family.

Vegetarian Vegetable or
Regular or Special Request
**Campbell's
Vegetable Soup**

10.5-oz.
Can

38¢



Striped (15.5-oz.), Chewy
or Original Chocolate Chip

**Nabisco
Chips Ahoy**

18-oz.
Pkg.

199¢

Super **GRAND UNION** Coupon

(603)

Coke Classic, Regular or Diet Sprite
or Regular or Caffeine Free

**Coca-Cola
or Diet Coke**

One
2-Liter Btl.

89¢

No Minimum Purchase Required With This Coupon. Good
Feb. 11 Thru Feb. 17. Limit One Coupon Per Family.

California - Low in Sodium
**Sunkist
Navel Oranges**

6 Large
88
Size

100¢



U.S.D.A. Choice Ultra Trim Beef

**First Cut
Chuck Steak**

Bone
In

148¢

Lb.

Super **GRAND UNION** Coupon

(602)

Decorator or Colors - Jumbo Sheets

**Brawny
Paper Towels**

One
70-Sheet
Roll

49¢

No Minimum Purchase Required With This Coupon. Good
Feb. 11 Thru Feb. 17. Limit One Coupon Per Family.

U.S.D.A. Choice
**Top Round
Roast Beef**

Half
Lb.

299¢



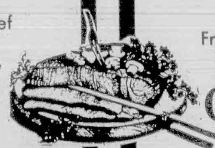
U.S.D.A. Choice Ultra Trim Beef

**Boneless
Chuck Roast**

Lb.

Chuck Fillet Steak...Lb. \$2.19

179¢



Fresh Fried In No Cholesterol Oil
**Buffalo Style
Chicken Wings**

Lb.

399¢

Assorted Varieties - Except Angel Food

**Duncan Hines
Cake Mix**

18, 25-oz.
to 18.5-oz.
Pkgs.

79¢



Kraft - Light Neufchatel or Regular

**Philadelphia
Cream Cheese**

8-oz.
Pkg.

89¢



U.S.D.A. Choice
Boneless Ultra Trim Beef

**Shoulder
London Broil**

Also:
Shoulder
Roast

Lb.

199¢

GRAND UNION

Not Responsible for Typographical Errors. We Reserve The Right To Limit Quantities. For Consumer Information or Assistance, Call Toll Free, 1-800-221-1835.

Prices and Offers Effective Sunday, Feb. 11 thru Saturday, Feb. 17, 1990.

Belleville Times SPORTS

BUC SHOTS

By Mike Lamberti



COACH FABIAN

Two weeks ago, Scott Fabian called a meeting of the 1990 crew team at the High School following the end of classes. Most of the kids who arrived there were expecting the usual pep talk about the upcoming crew season. You know, "the season is just a month away, so get into shape" or something along that line.

What most of the kids didn't expect to hear was that Fabian, the head coach of the crew team from 1987-89, was announcing his resignation to the team.

"It wasn't an easy thing to do," Fabian said. "I convinced myself that I wasn't going to get emotional. I was just going to tell them it was in my best interest to step aside. Needless to say, it wasn't that easy. Some of the kids, especially the senior girls (whom Fabian has been coaching since they were in the eighth grade) got upset and I did, too."

Although Fabian was the head coach for three years, he has been with the team as a coach since the spring of 1974. Back then, he was a college graduate, doing his student teaching at Belleville High.

"I was a volunteer coach in '74 and '75," Fabian said. "I was named a full time assistant in 1976 and served in that capacity until 1987."

Along the way, Fabian was credited with developing those marvelous girls' championship boats that made headlines in 1982, '84 and '85.

"Those were great times," the coach said. "As far as accomplishments go, being a part of those championship teams take the cake."

His greatest memories, however, are the times he spent with the legendary head coach, the late Sam Giuffrida.

"Sam and I were very close," Fabian said. "Having the opportunity to coach all those years under him was a great experience."

Giuffrida served as head coach of the crew team at Belleville from 1966-1986. In the fall of '86, Giuffrida suffered a heart attack. He recovered from that attack, but the doctors told him that his crew coaching career was over.

Fabian was named the head coach for the 1987 campaign, but inside he didn't plan on coaching past that season.

"I stayed in because Sam wanted me to," Fabian said. "I just think that now is the time to move on. My kids are growing up and I want to be there to watch them grow. My son is starting school and I live about an hour away from Belleville. So, after practice is over, it's a long haul to get home. The grind wears you down after a while."

Last spring, Fabian went down with a case of pneumonia, but was able to come back and coach after missing ten days.

Late in the 1989 campaign, the entire township of Belleville was stunned by the news of Giuffrida's sudden death.

"That week was very difficult," the coach said. "We were set for one of our biggest races later that week and the kids really wanted to row well for Sam."

Fabian enjoyed his relationship with the athletes.

"For me to name every kid I've ever coached would take a long time," Fabian said. "I don't want to list a group of kids, because they were all special. Suffice it to say, I'll never forget any of them."

He remembers the opportunity the girls team of '84 and '85 had when it rowed at the Canadian championships.

"That was a great opportunity," he said. "Competing against the top teams in Canada was a thrill. The atmosphere was tremendous."

"I also remember the '82 Mid Hudson Regatta, when the waters were so rough the race was almost cancelled."

Some of the things he won't miss are the 4 a.m. bus rides to the Mid Hudson Regatta.

"I also won't miss those 5 a.m. practices, or practicing in early March when the temperature is 25 degrees and the wind is blowing off the water. It used to take me an hour to thaw out after a practice."

As the new decade begins, Fabian feels the time to change is perfect.

"It's a new decade, it's time for some new leadership," he said. "The kids deserve the best coaching possible, and to be honest, I don't think I have it in me any more to do it day in and day out. The kids will have some outstanding coaches coming back, including Dennis (Villano), Bobby (Cassin) and Maureen (Russo). I hope one of them gets the head coaching job."

Although he will no longer be the head coach, Fabian doesn't plan on leaving the sport all together.

"No, I'll still be at the races, cheering the kids on. But, I'm not going to be in the way. The new coach will run the show. I'll just be there as an interested fan. I really do want to stay involved. Who knows, maybe someday I'll be involved in it again."

Does he have any regrets?

"No, not really. About the only thing I wish I had done was coach crew on the collegiate level. But the chance to work with these kids all these years was truly a great experience. I'll never forget it."

As for the state of the crew program, Fabian said it simply.

"The chances to race in the Flicks at Philly on Sunday's is a good experience for the team. Of course, it meant very little time off. Occasionally, we got a Monday off from practice, but the season is a long one."

"I'm hoping we can bring back the annual Goodwill Regatta (the race between boathouse rivals Belleville, Nutley and Kearny). But with the scheduling and the Flicks, there isn't much time to schedule it."

"We should have some pretty good teams. We don't have the big numbers, but the quality of the kids speaks for itself."

The quality of the coach speaks for itself, also. With the resignation of Scott Fabian, the athletic program at Belleville is losing a class act. Fabian represented our township with class and professionalism and it showed with the type of athlete that wore the Blue and Gold on the waters of the Passaic.

A note of thanks, Scott, for being a super coach and gentleman.

LAST WEEKS QUIZ

The Kansas City Scouts are now the New Jersey Devils of the NHL. The Seattle Pilots are now the Milwaukee Brewers in Major League baseball and the Buffalo Braves are the Los Angeles Clippers of the NBA. In the final year of the ABA, the Oakland Oaks did not have a franchise.

FOR THIS WEEK

Speaking of the ABA, who won the last three ABA titles, in 1974-75-76. Also, what year did the New York Nets first make it to the ABA finals and who was its coach?

FOR THIS WEEK

FOR THIS WEEK

FOR THIS WEEK

FOR THIS WEEK

FOR THIS WEEK

FOR THIS WEEK

FOR THIS WEEK

FOR THIS WEEK

FOR THIS WEEK

FOR THIS WEEK

FOR THIS WEEK

FOR THIS WEEK

FOR THIS WEEK

FOR THIS WEEK

Nardone injured in practice

Grapplers stopped in states

By Joe Piegaro

First the good news. Belleville routed the Bengals of Bloomfield last Wednesday by a 43-18 margin. The victory moved the Bucs to within one victory of a NNJIL title. They need only to defeat Don Bosco of Ramsey this Friday to clinch the championship and cap an undefeated conference season.

Secondly, BH3 recorded shutout No. 3 this season by pitching a 76-0 whitewash at Newark East Side this past Friday. That victory pushed the record for the year to 12-0.

The reward for all these good things was a berth in the State Sectionals. Belleville was ranked No. 5 in North Jersey, Group 3 Section 2, less than one power point behind West Morris Central of Long Valley, ranked No. 4.

Now the bad news. The bout with West Morris was held this past Monday and the Bucs lost a 35-27 decision, ending their undefeated season. The match was an exciting affair, coming down to the final heavyweight bout between our own George Wallace and West Morris' senior Chris Kraft. The Highwayman heavyweight prevailed, scoring a 12-4 major decision and sending West Morris into the semifinal round this evening against top ranked Warren Hills.

The bad news gets worse. Sophomore superstar Junior Nardone injured his knee in practice over the weekend and did not compete

against West Morris. His absence in the lineup left a void which Coach Joe Nisvovica could not fill. X-rays showed a tear in the cartilage. Nardone underwent microsurgery yesterday to repair the damage and will miss a minimum of ten days, possibly the remainder of the season.

Obviously, the injury to Nardone puts a severe damper on an otherwise glittering season. His spot in the lineup is still up for grabs, and if he cannot return for the District 7 championship in two weeks, Belleville's five year reign as title holder could come to a crashing halt. Not many teams can replace a 20-0 record successfully in less than 14 days.

Despite such a jolting development as Nardone's surgery, there were still numerous positive events which occurred this past week.

Dan Hywel, Belleville's best wrestler so far this year at 152 pounds, recorded falls at Bloomfield, East Side and West Morris. Danny now sports a 20-0 record with a team leading 17 pins. Hywel raised his career record to 56-19, with the 56 wins placing him in the No. 12 spot on the all time win list, tied with George D'Alessandro.

Team tri-captain Ralph Perna lost a decision at West Morris to Mike Mulnooney, but scored an 11-4 decision over Bloomfield's Tom Celluro and recorded a fall over Emil Melara of East Side to improve

his record to 19-4. Perna's career record of 64-17-1 puts him all alone in tenth place for varsity career victories.

Belleville's third tri-captain, senior Ken Henry, beat his arch-rival Paul Szap of Bloomfield for the second time in four days by a 9-5 margin. Henry then scored a 17-2 Technical Fall victory over James Osorio of East Side before setting for a 6-6 tie with West Morris' Dan McGuire. Now at 19-2-1, Henry has 48 career wins, good for 16th place, all time.

Freshman Joshua Cardinale appears to have taken over the 103 pound slot from George D'El Grande, winning twice this past week to extend his record to 3-1. Cardinale's pin over Bloomfield's R.J. Galotto was the spark that led BH3 to such an unexpected blowout. The diminutive force is a vital part of next year's team, and could become a star with a little bit of polish and fine tuning.

Let us not forget to mention the trio of Joe Ombalsky (125-130), Lee Hands (135) and Vinnie DeSimone (140). All three are on hot streaks, and all three won at Bloomfield, East Side and West Morris. Ombalsky and Hands own identical 19-4 records, while DeSimone is finally coming into his own, sporting a 14-5-1 record for the year.

BUC NOTES: Wrestler of the Week once again goes to Dan Hywel. The sensational junior has

been so dominating, fans are disappointed if he doesn't record a pin in the first period. Danny's three pins this past week were all the same — works of art... Although the officiating at West Morris had no outcome on the final result, it was in a word, terrible. This was a State Sectional match, pitting two of the top five teams in their respective areas, against each other in what was supposed to be a classic shootout. Too many times wrestlers from both teams were the victims of questionable judgement, poor positioning and erratic performance. Come on guys, the sectionals are supposed to be for the best teams AND the best officials. Congrats to West Morris for such great hospitality. The Long Valley school had noisy, supportive fans, just the way kids are supposed to be. Yet they were all ladies and gentlemen, a refreshing change from last week's fiasco with Bloomfield... See you next week!

Piegaro's Top 10

Last Week	This Week
1. 1. Warren Hills	14-0
2. 2. Madison Central	15-0
3. 3. Delaware Valley	18-2
4. 4. Fair Lawn	10-1
5. 5. Breck Memorial	12-1
6. 6. Westfield	13-1
7. 7. Paul VI Haddon	17-2
8. 8. Belleville	12-0
9. 9. So. Plainfield	15-1
10. 10. Paulboro	15-1

Jim and Andy DuHaime playing well

Buc cagers lose to Hackensack, D.B.

It's been a season of disappointment for the Belleville boys' basketball team. Last week was a prime example as the Bucs lost two games to Hackensack, 72-48 and Don Bosco, 66-53. The two losses dropped the team record to 2-17.

Don Roll's team battled Bloomfield last Tuesday. Tomorrow evening, Belleville will be at St. Joe's of Montvale in a 7:30 p.m. tip off. Next Tuesday, the '89-90 campaign will come to an end when the Bucs play the Mounties of Montclair, at Belleville, in a 4 p.m. start.

Against Hackensack, one of the stronger teams in the NNJIL, Belleville fell behind early and then tried in vain to play catch up.

"We lost it in the first half," Roll said of the Hackensack game.

"They're a real good team and their press really hurt us. We committed 23 turnovers in the game and there isn't anyone in this league you're going to beat with that many mistakes."

Hackensack jumped out to an 18-10 first quarter lead and ballooned the margin to 43-22 by intermission. The Bucs played a stronger second half, with Hackensack outscoring Belleville, 29-26 in the final two quarters.

Despite the loss, some impressive performances were turned in by the Bucs. Sophomore Troy Talmadge continued his strong play of late, scoring 18 points. He also led the Bucs with 14 rebounds.

"Troy has been playing good

basketball," Roll said. "He just needs to learn how to develop consistency, and that will come with maturity."

Another player who has been playing very well is junior forward Jim DuHaime. In the Hackensack game, he scored five points and hauled down eight rebounds.

"Jimmy has been up against some big opponents," Roll said. "We're putting him in the pivot position and since he's 6'2", he will usually be facing a bigger opponent. In the Hackensack game, the guy he was covering was 6'9".

Senior Doug Hoogenyde scored eight, Andy DuHaime, Dennis DeWork and Art Caruso had five points each and Michael Trezza rounded out the scoring with two

points. In the Don Bosco game, Belleville, according to Roll, arrived at the game in good shape physically, but not mentally.

"We just weren't into the game," Roll said. "We fell behind 6-0 early and I called a time out. We were able to cut into the lead for the rest of the first half, but the same thing happened at the start of the second half."

The Bucs came back to cut Don Bosco's lead to 12-9 after one quarter. It was 32-28 at halftime, but some poor shooting in the third quarter gave DB the cushion it needed to pull ahead.

Don Bosco outscored the Bucs, 12-6 in the third quarter and extended its lead to 44-34. In the fourth quarter, the Bergen County team increased its margin, winning by a final count of 13 points.

Jim DuHaime led the Belleville attack with 14 points. He also pulled down 12 rebounds.

Tom Klena had a season high 11 points, Andy DuHaime scored nine, Talmadge finished with eight, Hoogenyde and Caruso scored four each, Sal Straface scored two and Trezza had one.

"The younger kids are getting the necessary playing time," Roll said. "It has to help for the future. We just have to play our last three games as hard as we can and then start preparing for the next season."

Little League applications

Applications for the Belleville Little League will be available from Belleville schools next month, according to American League president Frank Caputo.

Children ages 9 to 12 and Belleville students are eligible to participate.

Tryouts are scheduled for March 12, 14, 19, 21 at Belleville High School, 6:30 p.m. The season is scheduled to begin in early May. Managerial and coaching positions are also available.

A free clinic, coordinating hitting, fielding and pitching will be conducted by Pat Rasi and members of the Belleville Little League at the High School on Feb. 28 and March 7 from 6:30 to 8:30 p.m.

For more information, contact Frank Caputo at 759-3002, or Pat Turi at 751-0190.

Hanos excels for Lady Bucs

Girls' hoopsters drop 2 grades

On a few occasions this season, the Belleville girls' basketball team has narrowly missed that elusive first victory. Such was the case last Tuesday when the Lady Bucs took on conference rival Hackensack. The girls led by as many as ten points, but down the stretch, Hackensack pulled back into the game and in the end, a three point shot at the buzzer gave the Lady Comets a 57-54 victory.

Belleville also dropped games to Immaculate Heart, 49-25 and Walkill Valley, 60-45. Karen Fucello's team was winless in 18 games as it entered this week's action.

Belleville will take on Bloomfield this afternoon in a 4 p.m. tip off at Belleville. Next Tuesday, the Lady Bucs take on Montclair in what could be the season finale. Tip off time is 4 p.m. from Montclair. At press time, Belleville was looking to schedule one more game, but date and time of that contest had not been determined.

The Hackensack game can be labeled a heartbreaker. The girls played well, but down the stretch, they weren't able to hold on to the lead.

"We played real good for the first three quarters," Fucello said. "We let it go in the fourth quarter. The kids got rattled. Our defense could have been better, too."

The big disparity in the contest came at the foul line. Hackensack took an incredible 40 foul shots, converting 30 of them. Belleville,

on the other hand, took 28 shots, hitting just 12.

"That was a big difference," the coach said. "We missed 16 foul shots in a three point loss. As far as Hackensack taking 40 foul shots, I have to attest that to some poor fouls on our part and some not so good officiating."

"But that aside, I don't blame our losses on anyone but ourselves. We should have done the job down the stretch."

A key play in the game came with 43 left in regulation time. The score was tied at 54 and Belleville had the ball under its own basket. As Belleville looked to inbound the ball, the official ruled the Belleville player moved her foot and called a violation.

Hackensack got the ball under its own basket and worked it in for the final shot. As the buzzer sounded, the shot was released and it found the net for the game winner.

Ma Hanos played another solid game for Belleville, scoring 13 points. Colleen Mannion had 12, Jennifer Bridge scored nine, Danielle DeWork finished with eight, Jennifer Abrams tallied five, Jocelyn Sansano scored three and Annalisa Fabiano and Thelma Espirito had two points each.

Versus Immaculate Heart, Belleville fell behind by a bundle in the first quarter and never recovered.

"We have a hard time traveling for a night game, sitting through a JV game first, then playing," Fucello said.

cello said. "We just didn't get into the groove until it was too late."

Immaculate Heart jumped out to a 20-2 first quarter lead and extended that margin to 34-13 by halftime. The second half was a little closer, with IH outscoring Belleville, 15-12.

Mannion led Belleville with five points. DeWork, Hanos, Fabiano and Bridge had four each and Nina Calvi and Zulay Fiallos had two each.

Last Monday, Belleville traveled to Sussex County to face Walkill Valley. A poor second quarter proved to be the difference as the Lady Bucs lost a 15 point decision, 64-45.

"Walkill Valley couldn't miss in that second quarter," Fucello said. "On the other side, we missed too many layups in that quarter."

WV led 15-13 after one but used a 20-7 second quarter to extend its lead to 35-20 by halftime. Belleville cut into the lead in the third quarter, narrowing the margin to 45-35. Walkill Valley took control in the final eight minutes, however, and won by 15.

Hanos led Belleville with 15 points. DeWork had 11. Bridge scored eight, Espirito finished with four, Calvi, Fabiano and Carey Woodruff scored two each and Mannion had one.

In addition to the fine play of Hanos, Fucello also praised Bridge, a senior, for her excellent play the past week.

(continued on page 14)

RECREATION ROUNDUP

Coaches needed

The Belleville Recreation Department is seeking coaches for its boys' baseball and girls' softball leagues. Men or women interested in coaching a baseball or softball team in youth leagues for ages 8 through 14 are urged to contact the Recreation Department at 450-3422 as soon as possible.

Sportsmanship, basic skills and fun are the objectives of the leagues. Every player on each team who attends required practices will play in every game. Come volunteer your time and share your interest and knowledge with the youngsters in town.

All potential coaches will be required to attend a training and certification course given by the Recreation Department.

Participants at these clinics will

be given instructions on psychology of youth sports, first aid, maximizing performance and organization of practice, as well as tips on specific coaching techniques in the sports of baseball/softball. Participants will be certified by the National Youth Sports Coaches Association upon completion of the clinic. An attractive benefit afforded to all Certified Coaches is a \$500,000 liability insurance coverage. The exact dates of the clinics will be announced in late February.

For further information or to register, contact the Belleville Recreation Department at 450-3422 between 8:30 a.m.-4 p.m. Monday through Friday.

Gymnastics program

The Belleville Recreation Department is again offering its always popular gymnastics program for girls on Saturdays at the Friendly House. This activity is now in progress and will continue through March 24. Girls in grades 1-6 can participate from 9:30 a.m. to 11 a.m. at the Friendly House on Frederick Street. There is no fee required but girls must be Belleville residents. Interested participants should wear sneakers and sign up for the program with the instructor when they arrive.

Baseball/softball applications

The Belleville Recreation Department announces that applications for all recreation baseball and softball programs are available in all public and parochial school offices and at the Recreation Department office.

Boys ages 8-9 can play Peanut League Baseball; 10-12 year old boys can play Junior League Baseball; and 13-15 year old boys are eligible for Senior League Baseball. Girls ages 8-14 can apply for all levels of Recreation Softball, including the Suburban team. Specific league structure breakdown for girls' softball will be determined after the registration deadline. In order to qualify for any league, the child must reach the minimum age before Aug. 1, 1990 and he/she cannot exceed the minimum age by July 31, 1990.

All leagues are for Belleville residents only.

High school freshmen or JV team players, or Suburban League team players (7th and 8th grade) are not eligible for the Rec leagues. All applications must be returned to the Rec House with birth certificates by Friday, March 23. Players trying out for the previously mentioned teams should complete Rec applications before the deadline in case they get cut.

In all cases, applications must be completed in full and signed by a parent, and all returning players

must re-apply. Applications accepted after the March 23 deadline will be considered late and will be treated accordingly. The Rec House (407 Joramemon Street) hours for registration are Monday-Friday, 8:30 a.m.-noon and 1 to 4 p.m. Beginning Feb. 26, the office will also be open Monday nights from 6 to 7:30 p.m. for registration. All children attending required practices will play in every game. Our leagues stress sportsmanship, basic skills and fun.

League directors needed

The Belleville Recreation Department is seeking one or two adult men to serve as league directors for spring and fall sports. The part-time positions entail supervision of league games/personnel, assigning umpires/referees, rescheduling rainouts, writing press releases and charting players' participation records.

Anyone interested must reside in Belleville and be available five nights a week and Saturdays. Qualified applicants must be sports-minded, responsible and must work well with people. These positions would also be good experience for a college student majoring in recreation/physical education. For further information or to apply, please contact the Recreation Department at 450-3422.

Buc Shots

(continued from page 13)

SPORTS NEWS

Quickly, how about that Mike Tyson defeat to Buster Douglas last Saturday night? It just goes to show that any fighter can be beaten on any given night. All this will do is enhance the purse for a rematch with millions guaranteed for both men.

All this talk about a baseball lockout is ludicrous. There is too much money to be lost on both sides. Maybe the lockout will extend into next week, but no way will the baseball season be affected by a strike. Baseball will be bigger than ever in 1990.

'Sub varsity' wrestling

By Joe Piegario

While the varsity wrestlers are grabbing all the headlines with an undefeated season, the JV squad has sneaked up on everyone, fashioning a very quiet but successful 8-1 record for the year.

Varsity head coach Joe Nisvoccia prefers to call the jayvee and freshman teams "sub-varsity," so we will do the same. The "sub-varsity" teams are broken down into two groups. The first is all freshmen, headed by first year coach Joe Kramer. The second group wrestles what was traditionally a jayvee schedule, and they are led by Belleville alumnus Mark Savostano.

Since the manpower numbers are not as large as in previous

years, there is a great deal of overlapping by both squads. Many freshmen move up to the JV when necessary, or if the opponent does not have a full freshman roster.

Both squads have done surprisingly well this year. A second place finish in the Rahway JV Tournament was followed by another second place finish in the Elizabeth JV Tournament. Also at Elizabeth, BHS took first place in the Freshman Tournament.

The squads are comprised of 10 freshmen, four sophomores and five juniors. Already two of the "sub-varsity" members have graduated to the big time. Joshua Cardinale, a freshman 103-pounder, was 12-0 when he moved up. Jimmy Mastropalo, a 145-pound junior, now occupies that same weight class on the varsity. Jim was the proud owner of a 9-1 record when the call came up from the varsity team.

Although the teams are called "sub-varsity," the performances are anything but "sub." Soph. Mike Conte is unbeaten at 13-0 with gold medals at Rahway and Elizabeth. Freshman Carlo Ritacco has a 15-1 slate with gold medals in all three tournaments. Both boys are first year wrestlers showing amazing learning ability.

Chris Talbot, a junior, is 13-1 with a gold at Rahway and a silver at Elizabeth. He has a forfeit victory to his credit and a cameo performer on the varsity and the rugged 130-pounder will definitely occupy a varsity spot next year.

Freshman Allan Cruz is 13-4 with a gold at Rahway and a gold medal in the Freshman Tournament. Cruz wrestles in the 135-pound division.

Two future members of the varsity are junior Tom Pontrella (with two "L's" please!) and sophomore Anthony Mastropalo. Pontrella is 12-3 at 112 pounds with a gold medal in the Elizabeth JV tournament. Mastropalo is 11-2 at a heavyweight with a silver medal at Elizabeth JV Tournament and a gold medal in the Rahway and Elizabeth Tournament.

Coach Joe Kramer teaches at BHS and is an alumnus of Hackensack High School. The first year maestro brings new energy and enthusiasm to the practice sessions and fits perfectly into the Nisvoccia regime.

Mark Savostano is an ex-District 7 champ and has developed a solid rapport with the "sub-varsity" members in his second season as assistant coach. Savo's approach is very similar to Nisvoccia's, quiet, professional and efficient.

Here are the remaining "sub-varsity" members:

Aldo Sanchez, soph., 3-5; Orlando Rosado, junior, 1-0; Keith Veltre, freshman, 7-3; Herman Cueto, soph., 5-5; Joe Clay, freshman, 7-6; Vince Barret, freshman, 0-0; Renaldo Deleon, freshman, 3-1; Ricky Constantino, freshman, 4-3; Carmine Tuosto, freshman, 3-2; Joe Gencarelli, freshman, 2-7; Vin Strumolo, junior, 4-4.

WE INVITE
ALL GM
PASSENGER CAR
OWNERS!

CLIP US GOOD!

CUT OUR REGULAR LOW PRICES EVEN LOWER WITH THESE GREAT COUPON SAVINGS!

COUPON SPECIALS FOR ALL GM PASSENGER CAR OWNERS...NOT JUST CHEVROLET & BUICK. YOU'RE ALL WELCOME AT BELLAVIA. COUPONS EXPIRE MARCH 30, 1990

ENGINE TUNE-UP

- Replace Plugs
- Replace PCV Valve
- Replace Fuel Filter
- Check Belts
- Check Dist. Cap and Rotor
- Check Ignition Wiring
- Set Ignition Timing
- Replace Points and Condenser
- For most (6-cylinder) cars with air conditioning

\$149⁹⁵
REG. \$189.00

- Replace Air Filter
- Check Auto Choke Linkage
- Set Idle
- Service Emission Controls

OFFER GOOD UNTIL MARCH 30, 1990

SHOCK ABSORBERS

Install 2 Genuine GM Goodwrench Shock Absorbers with a Lifetime Limited Warranty

\$59⁹⁵
REG. \$89.95

Ask for details.

OFFER GOOD UNTIL MARCH 30, 1990

TRANSMISSION TUNE-UP

- Drain the transmission fluid
- Adjust the throttle linkage
- Replace the pan gasket
- Clean the valve body
- Clean the pan
- Adjust the bands
- Replace/refill transmission fluid

\$72⁹⁵
REG. \$119.00

- Adjust the linkage
- Check the vacuum system
- Conduct a thorough road test.

OFFER GOOD UNTIL MARCH 30, 1990

LUBE, OIL CHANGE
OIL FILTER

\$19⁹⁵
REG. \$33.00

NO APPOINTMENT NECESSARY

FRONT ALIGNMENT

Includes camber/caster adjustments...toe adjustment...steering linkage check...tire check...shock absorber check, on GM passenger cars only.

\$39⁹⁵
REG. \$83.60

Parts extra if required.

OFFER GOOD UNTIL MARCH 30, 1990

BRAKE SPECIAL

- Inspect the wheels
- Inspect the wheel cylinder
- Inspect the grease seals
- Replace the front and/or rear disc pads, if necessary
- Replace the rear brake shoes, if necessary
- Machine rotors and drums, if required
- Inspect the system for leaks

\$198⁹⁵
REG. \$287.30

OFFER GOOD UNTIL MARCH 30, 1990

Mr. Goodwrench



Mr. Goodwrench

Bellavia CHEVROLET / BUICK
GEO
PARK AVE. • RUTHERFORD • 939-2509
SERVICE CENTER OPEN MONDAY TO FRIDAY 8 AM TO 5 PM

**COUPON
SPECIAL
CAR WASH**
\$4.50 + Tax
For Full Service
Exterior **\$3.75** + Tax
(With This Coupon)
EXPIRES 12/31/90
**FRANKIE'S
FUTURMATIC
BRUSHLESS
CAR WASH**
305 Broad St. • Bloomfield
748-9459
Open Mon. - Sat. 8-6
and Sun. 8-3

FEDERAL RESERVE NOTE

THE UNITED STATES OF AMERICA

ONE FULL MONTH OF
**PRESIDENTIAL
SAVINGS!**

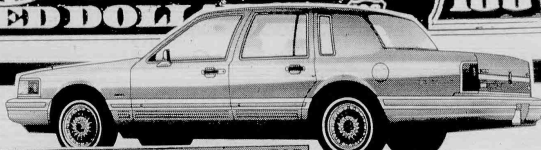
IF YOUR DEALER CAN'T
DELIVER 'EM, WE CAN!

Treasury of the United States



WE'LL TAKE
**THOUSANDS
OFF** YOUR
NEXT
CAR!

LET US PROVE IT!



MOTOR TREND CAR OF THE YEAR

MOTOR TREND CAR OF THE YEAR

NEW 1990 TOWN CAR

MSRP: \$30,207
DISCOUNT: \$3941

\$26,266

Lincoln 4-dr. Twilight Blue w/Std.: V/8, auto. trans., pwr. strng./brks./winds./locks/seat/ant., AIR, AM/FM cass., tilt, crse., plus opt.: dual illum. vis. van. mirr., headlamp conv. sys., pwr. deck lid pulldown, mats, 6-way pwr. pass. seat, lthr. wrap strng. whl., anti. lock brks., Stk. #04036. VIN #LY614645.

NEW 1990 TOWN CAR

MSRP: \$35,306
DISCOUNT: \$5043

\$30,263

Lincoln 4-door SIGNATURE SERIES White with Std.: V/8 eng., auto. trans., pwr. strng./brks./winds./locks/seat/ant., AIR, AM/FM cass., tilt, cruise, illum. vis. van. mirrors, headlamp conv. sys., pwr. deck lid pulldown, styled whls., plus opt.: traction lock axle, anti. lock brks., insta clear w/shield, carriage rf., pin stripes whl. lip midlg., JBL audio sys. Stk. #04020. VIN #LX635128.

WE GOT 'EM!

WE DELIVER!



NEW 1989 TRACER

Mercury 4-door White HATCHBACK with Standard: 4-cylinder, power steering/brakes/mirror, tinted glass, rear defogger, buckets, AM/FM stereo, cloth interior, fold down rear seat, plus optional: AIR CONDITIONING, automatic transmission, Stk. #99016. VIN #KR649071. Price includes \$1500 MFG rebate.

MSRP: \$10,796
DISCOUNT: \$2300

\$8496

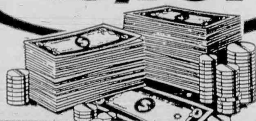


NEW 1990 COUGAR LS

Mercury 2-door Black, with Standard: 3.8L V/6 engine, automatic transmission, power steering/brakes/windows/mirrors, full wheel covers, AM/FM stereo, AIR CONDITIONING, cloth interior, plus optional: tilt steering, cruise, rear defogger, dual 6-way power seat. Stk. #06006. VIN #LH607846. Price includes \$1000 MFG rebate.

MSRP: \$17,209
DISCOUNT: \$3458

\$13,751



WE GOT 'EM!

WE DELIVER!



NEW 1990 MARK VII

Lincoln 2-door BILL BLASS, Crystal Blue with Standard: V/8 engine, automatic trans., power steering/brakes/winds./lks./ant./seat, AIR COND., rear defogger, crse., tilt, leather interior, auto. headlamp sys., wire whls., plus opt.: anti-theft sys., trac lock axle, JBL audio sys. Stk. #02006. VIN #LY633842. Price incl. \$1500 MFG rebate.

MSRP: \$30,652
DISCOUNT: \$5388

\$25,264



NEW 1989 CONTINENTAL

Lincoln 4-dr. SIGNATURE SERIES Current Red w/Std.: V/6 eng., AIR, auto. trans., pwr. strng./brks./winds./lks./seats/ant., rr. defog., t/gls., mag whls., radials, tilt, crse., auto. trk. rel./deck pull down, auto. head lamp sys., lthr. int. plus opt.: pwr. gls. moonrft., JBL audio sys., insta-clear heated windshield, alarm sys. Stk. #93063. VIN #KY806273.

MSRP: \$33,326
DISCOUNT: \$5886

\$27,440



WE GOT 'EM! WE DELIVER! OVER 150 VEHICLES

NOW IN STOCK!

AS LOW AS **6.9%** FINANCING OR UP TO **\$4000 REBATES**

ON SELECT MODELS. SEE US FOR DETAILS.

'88 TOWN CAR

Lincoln 4-dr. drk. titanium, V/8, auto. trans., pwr. strng./brks./winds./locks/seat/ant., AM/FM cass., AIR COND., full vinyl roof, rr. defog., ill., cruise, cloth int. Stk. No. 94034A. VIN No. JY624832. 29,754 ml.

\$16,995

'87 SABLE GS

Mercury 4-dr. driftwood, V/6, pwr. strng./brks./winds./locks/seat/ant., AM/FM stereo, tilt, defog., auto. trans., AM/FM stereo, tilt, cruise, full whl. cov. Stk. No. 88389. VIN No. H618933. 30,765 ml.

\$7695

'88 CONTINENTAL

Lincoln 4-dr. black, auto. trans., V/6, pwr. strng./brks./winds./locks/seat/ant., cruise, tilt, cons., AIR COND., AM/FM cass., lthr., t/gls., rr. defog., 31,158 ml., Stk. No. X89. VIN JY769925

\$17,995

'87 TOPAZ GS

Mercury 4-dr. white, 4-cyl. auto. trans., pwr. strng./brks./winds./locks/seat/ant., AIR COND., AM/FM cass., coach roof, ill., cruise, rr. defog. VIN No. H6633175. Stk. No. 89X89. 31,750 ml.

\$5995

'87 GRAND MARQUIS

Mercury 4-dr. black, V/8, auto. trans., pwr. strng./brks./winds./locks/seat/ant., AIR COND., AM/FM cass., coach roof, ill., cruise, rr. defog. Stk. No. 5X90. VIN No. HX689742. 21,700 ml.

\$10,995

'85 TOWN CAR

Lincoln 4-dr. blue, auto. trans., V/8 eng., AIR COND., pwr. strng./brks./winds./locks/seat/ant., rr. defog., AM/FM stereo, inter. wipers, whl. covts., tilt, cruise. Stk. No. 04042A. VIN No. FY681115. 65,481 ml.

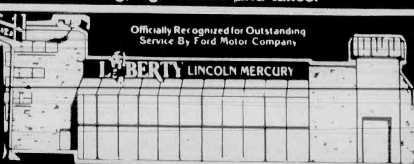
\$8995

Price(s) include(s) factory incentives & all costs to be paid by a consumer, except for licensing, registration and taxes.

WINNER OF GOLD & SILVER DISTINGUISHED SERVICE AWARDS



LE BERTY
LINCOLN-MERCURY MERKUR



Officially Recognized for Outstanding Service By Ford Motor Company

"Don't Leave Home Without Us!"

790 ROUTE 3, CLIFTON, N.J. • (201) 473-7800

Open Daily till 9 p.m. • Saturday til 5 p.m.

1990 LER GRAPHICS

OPPOSITE
HOFFMAN
LA ROCHE



Belleville Chamber of Commerce 1990-1991 — (seated from left); MaryAnn Flor, executive secretary; Kay Lewis (People's Bank), Donna DeVito (Not Just Nails), President Rita Troise (Troise Insurance), Mary Perry (Provident Savings Bank) and Sharon Jordan (Clara Maass Medical Center), 2nd row, standing: Michael Casale, Esq. (Gaccione, Pomace & Beck), Rev. Gerald Fortunato (Belleville Ministerium), Shirley Carbone (K-Mart), David Worral (Belleville Post), Dr. Ralph DiMalo (Belleville Ministerium), Jaye Tarantino (Belleville Times), Lou Paraboschi (Palmer Video), 3rd row, standing: Paul Goldman, CPA, David Bryant (Belleville Public Library), Frank Marmo (Verg, Inc.), Joe McGuire (Trust Co. of N.J.), J. Michael Layton (Wallace & Tiernan), Don Galgano (First DeWitt Savings), Henry B. Rosenberg (Ever Ready Label). Also in attendance: Michael Casale Esq., Kay Lewis (People's Bank), Commissioner Joe Fornarotto, and Shirley and Anthony LoPoma (Washington Motel).



Surrounded by beauty — Sheriff Tom D'Alessio stands tall amongst the new officers of the chamber. Shown from left are: Chairman of the Board, Jaye Tarantino; President, Rita Troise, and outgoing chairman and board director, Shirley Sherman.

Photos by Jaye Tarantino and Anthony Buccino

Chamber of Commerce installs new officers



Newly installed Chamber President Rita Troise being congratulated by Essex County Sheriff Tom D'Alessio at the luncheon.



Looking on at the ceremony of installing the Board of Director are Rev. Gerald Fortunato with Sheriff Tom D'Alessio.



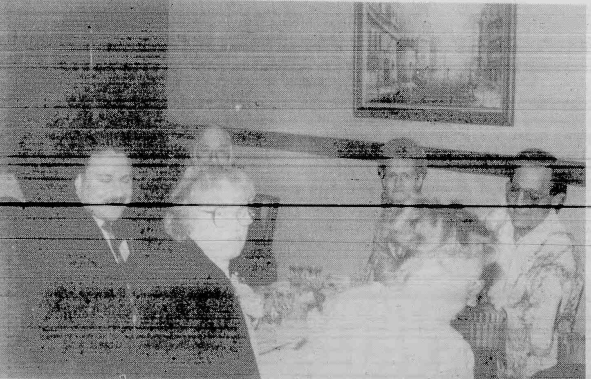
Being installed as the new president of the Belleville Chamber of Commerce — Rita Troise, while outgoing president, Jaye Tarantino looks on.



In recognition of his outstanding job as General Chairman of Belleville's 150th Anniversary Committee, David Bryant (V.P. of the Chamber), was presented with a plaque from the Belleville Chamber of Commerce, presented by chairman Jaye Tarantino.



Chamber Treasurer Joe McGuire having a friendly chat with Belleville Times Editor Anthony Buccino at the luncheon held at Three Guys From Italy Restaurant in Belleville.



Also in attendance — Michael Casale, Esq., Kay Lewis (People's Bank), Commissioner Joseph Fornarotto, and Shirley and Anthony LoPoma (Washington Motel).



Listening attentively to fellow chamber members at the luncheon are directors Donna DeVito and Shirley Sherman.

USE HUNDREDS OF NEW & USED CARS AND TRUCKS!

BUICK WELCOMES CHEVROLET TO ROUTE 17!



NEW '90 SKYLARK CUSTOM

Buick 4-dr. w/Std. pwr. strng brks, auto. trans., pwr. winds, 4-way man. seat adj., carpet savers, b/s mldgs, whl. open locks, rr. defog, AIR, 2-sp. wprs, rem. mirrs, crse, 3.3L MFI V6 3000 eng, tilt, custom long wire whl. cvrs, all season w/radials, AM/FM stereo cass, w/seek/scan, accent stripe, SE opt. pkg. Stk. #4040 VIN #L018887. Price incl. \$1250 factory rebate.

MSRP: \$15,053 DISC.: \$2658

\$12,395

NEW '90 CENTURY CUSTOM

Buick 4-dr. w/Std. pwr. strng brks, auto. trans., AIR, plus opt.: pwr. winds, ant. 6-way seat/lks, carpet savers, dr. grds, elec. rr. defog, delayed wprs, van. vis. mirr, crse, 3.3L MFI V6 eng, tilt, cust. locking wire whl. cvrs, accent stripe, SE/45 seat, SE opt. pkg. Stk. #2000 VIN #L444556. Price incl. \$1250 factory rebate.

MSRP: \$16,549 DISC.: \$3154

\$13,395

NEW 1989 SPECTRUM

Geo 2-dr. HATCHBACK, Coupe w/ Std.: pwr. brks, plus opt.: all seas. stl. bld. radials, fr./rr. mats, AIR, 1.5L 2-BBL L4 eng, 5-spd. man. trans., AM/FM ster. w/seek/scan, dig. clk, cloth buckets. Stk. #9111 VIN #K7522534.

MSRP: \$8639 DISC.: \$794

\$7845

NEW 1990 CAVALIER VL

Chevy 4-dr. w/Std. pwr. brks, plus opt.: rr. defog cloth buckets, auto. trans., 2.2L EFI L4 eng, AM/FM cass, w/seek/scan, dig. clk, AIR COND., all seas. stl. bld. w/w radials, pwr. strng, tlgls, b/s mldgs, fr./rr. mats. Stk. #2066 VIN #LT140819. Price incl. \$500 MFG rebate.

MSRP: \$10,390 DISC.: \$945

\$9445

NEW 1989 BERETTA

Chevy 2-dr. CPE, w/Std. pwr. strng/brks, plus opt.: cloth buckets, 2.8L MFI V6 eng, rr. defog, auto. trans., stl. bld. radials, AM/FM stereo, tilt, crse, int. wprs, aux. light, fr./rr. mats, h/d batt, AIR. Stk. #9020 VIN #KE145170. Price incl. \$750 MFG rebate.

MSRP: \$12,491 DISC.: \$1750

\$10,741

NEW '90 REGAL LIMITED

Buick 2-dr. w/Std. auto. trans., V/8 eng, pwr. strng brks, AIR, plus opt.: pwr. winds, trk. rel. locks, fr./rr. mats, rr. defog, int. wprs, vis. van. mirr, crse, wire whl. cvrs, pwr. ant., AM/FM cass, 6-way pwr. seat, SD pkg. Stk. #1973 VIN #L116621. Price incl. \$1000 factory rebate.

MSRP: \$18,129 DISC.: \$3134

\$14,995

NEW '90 LESABRE CUSTOM

Buick 4-dr. SEDAN w/Std. V/8 eng, auto. trans., pwr. strng brks, AIR, plus opt.: pwr. winds, lks, trk. rel. 6-way seat/ant., fr./rr. mats, dr. edge grds, seat back recl., rr. defog, elec. mirr, tilt vis. van. mirr, int. wprs, crse, AM/FM cass, w/constant sound, custom long wire whl. cvrs, w/radials, SE pkg. Stk. #2093 VIN #LH63677. Price incl. \$1250 factory rebate.

MSRP: \$18,933 DISC.: \$3438

\$15,495

NEW 1990 PRIZM

Geo 4-dr. NOTCHBACK w/Std. pwr. brks, plus opt.: all seas. stl. bld. b/w tires, 1.6L MFI L4 Toyota eng, auto. trans., no a/c, AM/FM ster. w/seek/scan, dig. clk, full whl. cvrs, rem. mirr, pwr. strng, cloth buckets. Stk. #9182 VIN #L2012939.

MSRP: \$10,972 DISC.: \$1577

\$9395

NEW 1990 LUMINA

Chevy 4-dr. SEDAN w/Std.: pwr. strng brks, plus opt.: AIR, cloth bench seats, rr. defog, 3.1L MFI V/6 eng, auto. trans., steel belted radials, AM/FM Stk. #2081 VIN #L1171143. Price incl. \$1000 MFG rebate.

MSRP: \$14,492 DISC.: \$2547

\$11,945

NEW 1990 S-10 BLAZER

Chevy 4WD, w/Std. pwr. strng brks, plus opt.: 4.3L EFI V/8 eng, 4-spd. auto. 3d trans, crse, n. spare carrier, off road stl. bld. tires, shield pkg, sport equip, AIR COND., rr. fold seat, AM/FM ster, cass seek/scan dig. clk, pwr. winds, lks, alum. whls, tlgls, rr. defog, tilt, w/wash, int. wpr, w/ tire, cloth bucket seats. Stk. #207X VIN #L018811. Price incl. \$1000 factory rebate.

MSRP: \$19,872 DISC.: \$2877

\$16,995

I'm always looking for ways to save our customers money! Come look at N.J.'s largest selection of Brass Hat cars & trucks. And remember, the only previous owner of these vehicles was GM! *Joe Bellavia*

'90 PRIZM (LSI TRIM)

Geo NOTCHBACK 4-dr. w/Std. all seas. stl. bld. radials, 1.6L MFI L4 Toyota eng, 5-spd. man. trans., pwr. strng brks, cloth buckets, plus opt.: AM/FM stereo w/seek/scan, dig. clk, no a/c, LSI trim, fr./rr. mats, pwr. winds, sunroof, 3.164 Brass hat miles. VIN #K2302527 Stk. #993.

ORIG. MSRP: \$13,201 DISC.: \$3265

\$9995

'89 SKYLARK

Buick CUSTOM COUPE 2-dr. w/ 6-cyl, auto. trans., pwr. strng/brks, winds/locks/seats, AIR COND., AM/FM stereo cass, tilt, crse, rr. defog, tlgls, console. VIN #JM023577. Stk. #3028. 8,193 brass hat miles.

ORIG. MSRP: \$13,832 DISC.: \$3337

\$10,495

'89 CAMARO RS

Chevy 2-dr. COUPE, 5.0L V/8 fuel inj, eng, auto. trans. w/O, tbar w/locks, cust. int. whls, AIR COND., pwr. strng brks/winds/locks/seats, AM/FM Bose cass, tilt, crse, U, gls, limited slip diff., Stk. #835 VIN #KL197871. 3,783 brass hat miles.

ORIG. MSRP: \$16,004 DISC.: \$3599

\$11,495

'89 BERETTA GT

Chevy 2-dr. Coupe w/6-cyl, auto. trans., pwr. strng brks/winds/locks, AIR COND., AM/FM stereo cass, equal, tilt, crse, rr. defog, b/s mldgs, tlgls, console, alum. whls. VIN #KE307353. Stk. #828. 3,623 brass hat miles.

ORIG. MSRP: \$15,318 DISC.: \$3623

\$11,695

'89 CELEBRITY

Chevy 4-dr. sedan w/6-cyl, auto. trans., pwr. strng brks/winds/locks/seats/ant., AIR COND., AM/FM stereo cass, tilt, crse, rr. defog, b/s mldgs, tlgls. VIN #K218011. Stk. #809. 3,143 brass hat miles.

ORIG. MSRP: \$15,288 DISC.: \$4293

\$11,995

'89 CELEBRITY WGN.

Chevy 4-dr. w/6-cyl, auto. trans., pwr. strng brks/winds/locks, AIR COND., AM/FM stereo cass, tilt, crse, rr. defog, tlgls, 3-seats. VIN #KZ116694. Stk. #824. 8,351 brass hat miles.

ORIG. MSRP: \$16,918 DISC.: \$4723

\$11,995

'89 CENTURY

Buick LIMITED 4-dr. w/6-cyl, auto. trans., pwr. strng brks/winds/locks/seats, AIR COND., AM/FM stereo cass, tilt, crse, rr. defog, tlgls. VIN #K1493367. Stk. #9104. 11,613 brass hat miles.

ORIG. MSRP: \$16,022 DISC.: \$4698

\$11,995

'89 CAPRICE

Chevy CLASSIC 4-dr. w/8-cyl, auto. trans., pwr. strng brks/winds/locks/seats, AIR COND., AM/FM stereo cass, tilt, crse, rr. defog, pin stripes, b/s mldgs, tlgls. VIN #KA114834. Stk. #813. 5,266 brass hat miles.

ORIG. MSRP: \$17,404 DISC.: \$4771

\$12,495

'89 ESTATE WGN.

Chevy CAPRICE w/8-cyl, engine, automatic transmission, pwr. strng brks/winds/locks/seats/ant., AIR COND., tilt, crse, rr. defog, tlgls, 3-seat. VIN #KA140337. Stk. #829. 12,336 brass hat miles.

ORIG. MSRP: \$18,929 DISC.: \$5434

\$13,495

'90 REGAL

Buick CUSTOM COUPE 2-dr. w/6-cyl, auto. trans., pwr. strng brks/winds/locks, AIR COND., AM/FM stereo cass, tilt, crse, rr. defog, tlgls, wire whls. VIN #LT1402838. Stk. #1918. 8,618 brass hat miles.

ORIG. MSRP: \$17,229 DISC.: \$3724

\$13,495

'89 CUTLASS SUPREME

Olds 2-dr. rr. defog, 2.8L V/6 MFE eng, auto. trans., w/O, lugg. carrier, AM/FM cass, pwr. strng brks/winds, 6-way pwr. seat, b/s mldg, door edge grds, AIR COND., strng. whl. touch cont., opt. pkg. 1SC. Stk. #5164. VIN #KA19700. 1,040 brass hat miles.

ORIG. MSRP: \$19,634 DISC.: \$5639

\$13,995

'89 CAPRICE LS

Chevy 4-dr. BROUHAM 5.0L V/8 fuel inj, eng, auto. trans. w/O, vinyl roof, cust. int. wire whls, ext. AIR COND., pwr. strng brks/winds/locks seat, rr. defog, AM/FM cass, tilt, crse, tlgls, w/w tires. Stk. #814. VIN #KA19473. 6,805 brass hat miles.

ORIG. MSRP: \$20,250 DISC.: \$4738

\$15,495

'89 ASTRO VAN LT

Chevy 4-dr. 4.3L V/6 fuel inj, eng, auto. trans. w/O, cust. int. ext. alum. whls, AIR COND., pwr. strng brks/winds/locks, AM/FM stereo, tilt, cruse, tlgls, 8-pass, elec. instrum, velour buckets. Stk. #773. VIN #K8227368. 8884 brass hat miles.

ORIG. MSRP: \$20,993 DISC.: \$4898

\$15,995

'89 RIVIERA

Buick 2-dr. elec. trk. pull down, 6-way pwr. seat, strng brks/winds/locks, 6 cyl, keyless entry sys., auto. rr. mirr., twilight sentinel, AM/FM cass, AIR COND., thr. tilt, cruse, lumbar supp, SD group, auto. trans. Stk. #9053 VIN #KU40068. 5,325 brass hat miles.

ORIG. MSRP: \$26,276 DISC.: \$7281

\$18,995

'89 REATTA

Buick 2-dr. Coupe w/6-cyl, auto. trans., pwr. strng brks/winds/locks/seats/ant., AIR COND., AM/FM stereo cass, tilt, crse, rr. defog, pin stripes, thr. int. electr. instrum. VIN #K8906640. Stk. #3318. 987 brass hat miles.

ORIG. MSRP: \$27,315 DISC.: \$7220

\$19,995

'89 SUBURBAN

Chevy K2500 w/8-cyl, auto. trans., pwr. strng brks/winds/locks, AIR COND., AM/FM stereo cass, tilt, crse, rr. defog, b/s mldgs, tlgls, 8-pass. VIN #KF181031. Stk. #881. 4,365 brass hat miles.

ORIG. MSRP: \$25,793 DISC.: \$4797

\$20,995

'89 CORVETTE

Chevy 2-dr. hatchback Coupe w/8-cyl, auto. trans., pwr. strng brks/winds/locks/seats/ant., AIR COND., AM/FM stereo cass, tilt, crse, rr. defog. VIN #K5118054. Stk. #5179. 9,715 brass hat miles.

ORIG. MSRP: \$34,463 DISC.: \$10,468

\$23,995

'89 CONVERTIBLE

Chevy CORVETTE w/8-cyl, automatic transmission, power strng brks/winds/locks, AIR COND., AM/FM stereo cass, tilt, crse, console. VIN #K5117094. Stk. #849. 4,074 brass hat miles.

ORIG. MSRP: \$39,640 DISC.: \$11,646

\$27,995

Mr. Goodwrench + GM Parts + Mr. Goodwrench

Price(s) include(s) factory incentives & all costs to be paid by a consumer, except for licensings, registration and taxes.

©1990 LER GRAPHICS

Bellavia CHEVROLET/BUICK

939-6800 • ROUTE 17, E. RUTHERFORD

JUST NORTH OF ROUTE 3 ON ROUTE 17 • OPEN DAILY 9-9; SAT. 9-6 • CALL FOR EASY DIRECTIONS



PHARMACIST BILL LYNCH EXPLAINS SUBSTANCE AWARENESS AT SCHOOL 3 — Lynch's presentations are in conjunction with Substance Awareness Coordinator Debbie Meola and the Belleville Alliance for Substance Education.



A MONK COMFORTS ROMEO — during a School 7 presentation of Shakespeare for Children. The school's 4th 5th and 6th grade AT's have been studying the bard, and raised the money themselves to bring in the New York Actors to town to see scenes from Romeo and Juliet, and the Taming of the Shrew.

ADVERTISE!



REAL CUT UPS — Mr. Wodopuja's fifth grade science class dissected piglets recently. Not the least bit squeamish, the students were delighted when they were able to identify parts of the piglet anatomy.



St. Patrick's Day BARGAINS

RETAIL ADVERTISING
ROP SPECIAL PAGES

Publication Date March 8, 1990
Space Reservation March 2, 1990

RATE: \$16.00 per column inch

MECHANICALS: 6 columns x 21 inches
2 inches per column
1/4" between columns

Advertisements will be published in all three newspapers
(The Nutley Sun, Belleville Times, Bloomfield Life).

On March 8th Retail Advertising will publish its Special Pages...

"ST. PATRICK'S DAY BARGAINS"

RESERVE YOUR SPACE NOW! Reach our \$392 MILLION MARKET — the 100% PAID CIRCULATION, where your advertising dollars work for you (our newspapers don't land on the lawns, nor in the trash; they're not blown away by the wind — they're delivered by the US MAIL and sold in over 125 newsstands).

201-667-2100

Retail Advertising
Orechio Publications & TV

800 Bloomfield Avenue, Nutley, New Jersey 07110

REACH THE READERSHIP THAT CAN & DOES BUY!



LEARNING IS FUN — PEP-C members Valerie Hutchinson and Danielle Italiano address Mrs. Lo Coco's 2nd grade class at School 3. The two teens are members of the Peers Educating Peers Club, a substance awareness program.



MANY HANDS MAKE LIGHT THE WORK — Little helpers at School 5's Tricky Tray night, from left, Christina Crescenzi, Christina Jimenez, and Geanine Gialanella.



Orechio
Publications & TV
The Nutley Sun
Belleville Times
Bloomfield Life
667-3000

FIND YOUR WORLD IN THE

CLASSIFIEDS

The Nutley Sun
Belleville Times
Bloomfield Life

THE CLASSIFIEDS

Call:

667-3000

THE WORLD AT YOUR FINGERTIPS

667-3000
Mon. thru Fri.
9:00 AM to 5:00 PM
Deadline - Tues. 12 Noon

CLASSIFIED

CHECK YOUR AD THE
FIRST DAY OF
PUBLICATION.

The Nutley Sun, Belleville
Times & Bloomfield Life
are responsible for
MAJOR errors in the first
day's insertion.

CREDITS:
Credits and adjustments
are to be made only for errors
which significantly
alter the effectiveness of the
ad, such as a wrong tele-
phone or price. Credits will
not be issued for typo-
graphical errors or mis-
spelled words. The news-
papers can assume respon-
sibility only for MAJOR
errors in the first day's
publication.

Classified line ads appear
in all three newspapers.
NUTLEY SUN
BELLEVILLE TIMES
BLOOMFIELD LIFE

and will appear once, free
of charge, on OBC-TV
Channel 36 during "The
Community Bulletin
Board" time frame.

INDEX



EMPLOYMENT



FINANCIAL



INSTRUCTION



MERCHANDISE



PETS & LIVESTOCK



WHEELS



REAL ESTATE



RENTALS



ANNOUNCEMENTS



CHILD CARE

AUTO SALES

1988 OLDS ROYALE
BROUGHAM. 4 dr sedan.
V6 suspension. 12,000
miles. Excel. cond.
\$11,000.
Call 235-9289 eves.

1989 NISSAN SENTRA 2
dr., white, loaded,
automatic, only 3700 mi.
must sell, moving. \$8500.
667-9280

1980 Chevy Camaro
best offer takes it.
Call 338-7014 aft. 6pm

AUTO WRECKERS

JUNK CARS WANTED
*Free Tow-Away
*Same Day Pick-Up
(In Most Cases)
S.O.S. TOWING, INC.
429-8471 Bloomfield
481-2610 Newark

GENERAL NOTICES

FUND RAISER
American Legion Post 105
holding a Tupperware
Fund Raiser on Wed.
Feb 21 at 7:30 PM.
Loc. 621 Washington
Ave., Belleville.

AUTO INSURANCE

743-5582

INCOME TAX

Thomas Delaney

Delson Associates

AUTO INSURANCE CENTER

CHECK OUR RATES

Immediate Coverage Minimum Down Payment
Mon. - Friday, 10 a.m. - 5 p.m. & 7 p.m. - 8:30 p.m.,
Saturday 10 a.m. - 3 p.m.

138 BLOOMFIELD AVE. BLOOMFIELD

BIB'S

ATTENTION! AUTO PARTS

Will pay cash for any junk
car in any condition

Highest prices paid for late models.

USED CARS & TRUCKS

USED PARTS

991-4246 or 991-0081

54 Stover Ave., Kearny

USED PARTS

FREE TOWING & ROAD TESTS

Kraks

STANDARD & AUTOMATIC

4 WHEEL DRIVE TRUCKS & CARS

FREE ESTIMATES **998-9666**

(Across from North Arlington Diner)

20 RIVER ROAD, NORTH ARLINGTON

GENERAL NOTICES

**A WONDERFUL
FAMILY EXPERIENCE**
AUSTRALIAN,
EUROPEAN,
SCANDINAVIAN,
JAPANESE HIGH
SCHOOL EXCHANGE
STUDENTS ARRIVING
IN AUGUST. BECOME
A HOST FAMILY/
AMERICAN INTER-
CULTURAL STUDENT
EXCHANGE.
CALL 1-800-SIBLING

PERSONAL NOTICES

**DO IT
YOURSELF
DIVORCE KIT**
Monday-Friday
9 AM to 5 PM
(201) 782-5540

**PRAYER OF
APPLICATION
TO THE HOLY SPIRIT**
Holy Spirit you who solve
all problems, who light all
roads so that I can attain
my goal. You who give me
the Divine gift to forgive
and forget all evil against
me and that in all in-
stances of my life you are
with me. I want the short
prayer to thank you for all
things and to confirm
once again that I never
want to be separated from
you, even in spite of all
material illusion. I wish
to be with you in eternal
Glory. Thank you for your
mercy toward me and
mine. The person must say
this prayer for 3 consecu-
tive days. After 3 days the
favor request will be
granted even if it may ap-
pear difficult. This prayer
must be published im-
mediately after the favor
is granted, without men-
tioning the favor, only
your initials should appear
at the bottom.

G.C.S.

PERSONAL NOTICES

NOVENA ST. JUDE
This novena has never
been known to fail. This
novena must be said for 9
consecutive days. Publi-
cation must be promised.
Oh, Holy St. Jude,
Apostle and Martyr great
in virtue and rich in
miracles, near kinsman of
Jesus Christ, faithful in-
tercessor of all who invoke
your special patronage in
time of need, to you I
have recourse from the
depth of my heart and
humbly beg to whom God
has given great power to
come to my assistance.
Help me in my present ur-
gent petition. In return, I
promise to make your
name known and call you
to be invoked. St. Jude,
pray for us all who invoke
your aid, Amen.
Say 3 Our Fathers, 3 Hail
Marys and 3 Glorias.

NOVENA TO ST. JUDE
This novena has never
been known to fail. This
novena must be said for 9
consecutive days. Publi-
cation must be promised.
Oh, Holy St. Jude,
Apostle and Martyr, great
in virtue and rich in
miracles, near kinsman of
Jesus Christ, faithful in-
tercessor of all who invoke
your special patronage in
time of need, to you I
have recourse from the
depth of my heart and humbly
beg to whom God has
given great power to come
to my assistance. Help me
in my present urgent
petition. In return, I
promise to make your
name known and call you
to be invoked. St. Jude,
pray for us all who invoke
your aid, Amen.
Say 3 Our Fathers, 3 Hail
Marys and 3 Glorias.

G.C.S.

CHILD CARE
Childcare - P/T - F/T, for
5 mos. child in Nutley
home. Responsible, exp.
ref. req. 667-1195

CHILD CARE

**RESPONSIBLE
MOTHER** will love &
care for your child in her
home. F/T days, exp & ref
sup. Call 743-4994

NURSERY SCHOOLS

**NANNY'S
INFANT CARE CENTER**
Full Day Sessions
6 weeks to 2 Yrs. Old
204 Washington Ave.
Belleville 759-1524
Director: Dolores Arlt

**THE MAGIC COTTAGE
NURSERY SCHOOL**
A Place Where Learning
is fun
State Certified School &
Teachers. Balanced
Lunch. Year round half or
all-day sessions.
*Arts & Crafts
*Science
*All Day Kindergarten
Registration accepted now
759-8758
393 Washington Ave.
Belleville (Cor. Essex St.)

DOMESTIC

MOTHERS HELPER
13 yr. old girl, who loves
children, will watch your
children while you
houseclean, shop, or just
take a nap. Available
Saturdays & Sundays
or 4 to 9 pm weekdays.
Amperse center of Bldg.
only. Unless you can
provide trans. \$3.00 per
hour. Call Jamie
680-1807 or 748-8729
after 4:00 weekdays,
anytime weekends.

GENERAL OPPORTS.

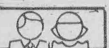
\$\$\$
EARN \$5 to \$10 an hr.
Set your own hrs. P/T or
F/T Sell Avon
Call Claire 429-0301

**ALL PHASE
EMPLOYMENT
SERVICE**
382 Franklin Ave.
Nutley, N. J.
661-W.O.-R-K
997-W.O.-R-K

Permanent & Temporary
F/T & P/T positions
Vacation Plan

**OBC TV
CHANNEL**

36



EMPLOYMENT

SECRETARY

SECRETARY/ADMIN ASST

Belleville. Self starting
team player with good
steno skills to assist
President of small
engineering firm.
Knowledge of Multimate
or equal a must. Com-
petitive salary. Reply to:
The Nutley Sun
Box 293
800 Bloomfield Avenue
Nutley, N.J. 07110
429-5733

EMPLOYMENT WANTED

Computer CRT Oper. &
Clerical - Experienced,
Organizing Work -
Accounts Payable and
Receivable, Payroll, Cash
Balance, Etc. Correc
Report Codes, Updat-
Files, Typing, Phone
Orders, Calculator, Good
at Figures, Program,
Debug, Word Processor.
429-5733

YOUNG WOMAN will
clean homes in Belleville
area. Call 759-5630

GENERAL OPPORTS.

\$\$\$
EARN \$5 to \$10 an hr.
Set your own hrs. P/T or
F/T Sell Avon
Call Claire 429-0301

**Terri Cimelowski
SHEFFIELD INC.**
2013 McCarter Highway
Newark, NJ 07104
201-484-5000

CUSTOMER SERVICE
Heavy phones, Typing, PC
exp. helpful, mature, F/T.
Salary open. 661-2718

GENERAL OPPORTS.

Assembly Work at home.
Computer parts, Creative
crafts, Wooden Novelties.
Excellent Income!
1-504-646-2335
AD# 7869

BE YOUR OWN BOSS
National manufacturer
needs local person to ser-
vice 100% natural juice
route. Best one-man busi-
ness ever. No selling. No
overhead. Must have
\$14,400 secured 100% by
inventory. \$55,000 very
possible first year. This
could make you indepen-
dent. First time
offer, for details call
9am-9pm.
1-800-633-1740

Collections/Credit Clerk

Leading manufacturer of
corrugated container
products has an immed-
iate opening in our Account-
ing Dept.

As a Collections/Credit
Clerk you will be respon-
sible for all chargebacks &
heavy telephone work in
accounts receivable
collections.

Successful candidate must
have 2-4 years experience
with credit & collections
able to type 40 WPM and
have general computer
knowledge.

We offer a competitive
salary and comprehensive
benefits package. For con-
sideration, send resume
indicating salary require-
ments or call:

**Terri Cimelowski
SHEFFIELD INC.**
2013 McCarter Highway
Newark, NJ 07104
201-484-5000

CUSTOMER SERVICE
Heavy phones, Typing, PC
exp. helpful, mature, F/T.
Salary open. 661-2718

GENERAL
OPPORTS.

Circulation Service Reps. (mornings). The Star Ledger has early P/T work start Sat 5:00 plus car expenses & route profits, fringe bnf's incl: vision, dental, life insurance & vacation. Rapid increases in salary & days per week.
Call 1-800-242-0850.

FEMALE MODELS

For 1990 fashion show. 18 to 25 yrs old. Picture, height, weight, measurements, address, & phone #. Send to: Mark Lorenz Fashion Show, PO Box 2587, Bloomfield, NJ 07003.

Hairdresser/Manicurist wanted for established business. Moving to newly designed location.
667-3311. Leave message if phone machine is on.

HOMEWORKERS

NEEDED
Earn up to \$500.00 per week accomplishing our projects. Free home. 24-hr. Recorded. FREE DETAILS.
1 (709) 556-6130, Ext. #114

LIGHT HAND assembly position open, pleasant environment, \$3.60 hr., 751-0871 Mon-Fri, 9-3PM

Medical Assistant Needed Previous experience in medical office required. Call 667-8212

NURSES AIDES

FREE HOME HEALTH AIDE TRAINING PROGRAM

JOBS IN NUTLEY & VICINITY. CLASSES STARTING FEB 20, FOR 2 WEEKS ONLY. TO RESERVE YOUR SEAT CALL DIRECTOR OF PROFESSIONAL SERVICES.
772-1114
Limited Seating
EOE

P/T EARLY MORNING Newspaper routes 5-6:30 AM, 7 days avail in your area. Earn \$400 to \$500, per mo. Plus cash incentives. A reliable car is a must. Call toll free 1-800-242-0850

Receptionist/Assistant mornings & afternoons. Mon-Fri. Typing required. Call Nutley Chiropractic Center at 667-8118

TEXAS REFINERY

CORP

needs mature person now in this area. Regardless of experience, write:
N.W. Hopkins
Box 711
Fl. Worth, TX 76101

We're looking for a few good men and women. If you're a high school graduate seeking education, travel and a valuable job skill.
Call 1-800-MARINES

YOUR Expressive Face in Print Advertising Earns Steady Income. Children, Teenagers, Adults, NO FEES. Details:
Models Studio A
Box 93-427
Hollywood, Ca 90093

PART-TIME
HELP

Part time
BANK TELLERS
Nutley

We have openings available for part time tellers in our Nutley Branch. Will consider trainees. Clerical or cashier experience a plus. For information call or visit between 9am-3pm.

THE
TRUST
COMPANY
OF

NEW JERSEY
474 FRANKLIN AVE
NUTLEY, NJ 07110
661-0300

EOE M/F/H/V

PART-TIME
HELPMEDICAL
TRANSCRIBER

Clara Maass Medical Center, a 475-bed acute care facility located in suburban Belleville, NJ, currently has a part time opening in its busy Medical Records Department for an experienced Medical Transcriber.

The successful candidate will possess excellent typing skills, transcribing and dictaphone experience. Medical terminology is necessary. This part time position entails weekends and evenings.

For further information and interview, please send resume or apply in person to:

HUMAN RESOURCES
DEPARTMENT

CLARA MAASS MEDICAL CENTER

One Franklin Avenue
Belleville, NJ 07109

Equal Opportunity Employer

PART-TIME

Earn \$5.00 to start! Frequent raises, paid vacation/holidays, bonuses/incentives. Responsible people needed to work for RTV Rental Co. in a Bloomfield area hospital. Year-round days from 12PM to 5PM. Call 858-0331

Receptionist Wanted immed. P/T.
482-0455

Telephone Solicitor
P/T Thurs & Fri even.
6:30-9:30 per hr. 751-5500

SALES

ATTENTION
Sales Reps for Star Ledger. \$4 per hr. guaranteed. Top commissions. 14-17 yrs. exp. Paid training. For more information call 877-5762

Have you ever wanted to...
*Be your own boss?
*Have your own business?
*Give yourself a raise?
*Earn all you want!

Shakee Opportunity
338-7585

BUSINESS
OPPORTS.

MANICURIST Be your own boss. Approx 100 sq ft. avail in busy beauty salon. Rent neg. 338-9013

OWN YOUR OWN

business handling Frito Lay, Nabisco and other name brand food products. Service accounts set up and owned by parent company. Nationwide census shows outstanding return on investment. Requires approximately eight hours per week and \$15,000 cash. Call 1-800-527-0033 anytime. Operator #2.

—WORK AT HOME

\$1000 A WEEK

Send Self Addressed

Stamped Envelope to:

Best Systems

1405 Avenue Z

Suite 180K

Brooklyn, New York

11235

LOANS
PARTNERS
DEALERSHIPS

ANYONE CAN APPLY! \$5,000 COLD-START. Guaranteed! Even bad credit. As seen on TV. Also VISA/MC, no deposit! Easy, fast qualify! Cash advances!
1 (800) 677-5103, anytime

LOANS
PARTNERS
DEALERSHIPS

\$5000 CREDIT LIMIT Absolutely guaranteed. No gimmicks! Establish or reestablish your credit. Cash advances - VISA/MASTERCARD available.
Call 1-900-386-6638
Operator 6
\$1.95 per minute @ 12A

UNSECURED LOANS

TO \$50,000
No Collateral, No Co-Signers, Bad credit and Bankruptcy OKAY! Send Self Addressed Stamped Envelope to:

LOANS
Suite 188

7027 West Broadway Blvd.

Plantation, FL 33317

GUARANTEED CREDIT

Regardless of Credit History. Get VISA/MASTERCARD, Signature Loans, Interest-Free Credit, Consolidate & Lower Monthly Payments.

1-900-456-6639

\$2/min.

24 hour service

LOANS
PARTNERS
DEALERSHIPS

BAD CREDIT Stop creditors cold-learn exactly how to fix your credit report, get loans, credit cards, etc. Amazing recorded message reveals details.
Call 1-702-598-5519

TAX

INCOME TAX PREPARATION
Low Cost
Free Pick Up & Delivery
Evening Hours Avail

Henry F. Wawroski, CFP
Certified
Financial Planner

Essex County 748-9893

INCOME TAX

TAX PREPARATION AT AFFORDABLE PRICES

CALL FOR APPT. 338-9824

APPLIANCES

GAS GE DRYER

Almond color, large, heavy duty. Like new.

\$250. Call 472-3282 after 7PM. Leave message.

ARTICLES
FOR SALE

PURPLE MARTIN BIRDHOUSES ORDER FACTORY DIRECT

Ship anywhere. Aluminum, hinged doors, guard rails, telescoping pole, VISA/MC. For information:

1-800-869-2828

COATES

MANUFACTURING INC.

Shrewport, LA

STANLEY PRODUCTS

Long lasting brooms, mops, wall brush. Health care. Cleaning house, car, patio. Concentrated kills germs.

Call 429-5733

WANTED

USED AIR CONDITIONERS

CASH

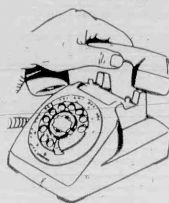
482-3681

WOLFE TANNING BEDS

Commercial-Home Units From \$199.00 Tampo-Lotions-Accesories.

Monthly Payments Low As \$18.00. Call Today

FREE! Color Catalog 1-800-228-6292

Get Personalized
Help With YourClassified Ads
by Phone

Special Line for Classified ads Only

(201) 667-3000

9 - 5, 5 days a week

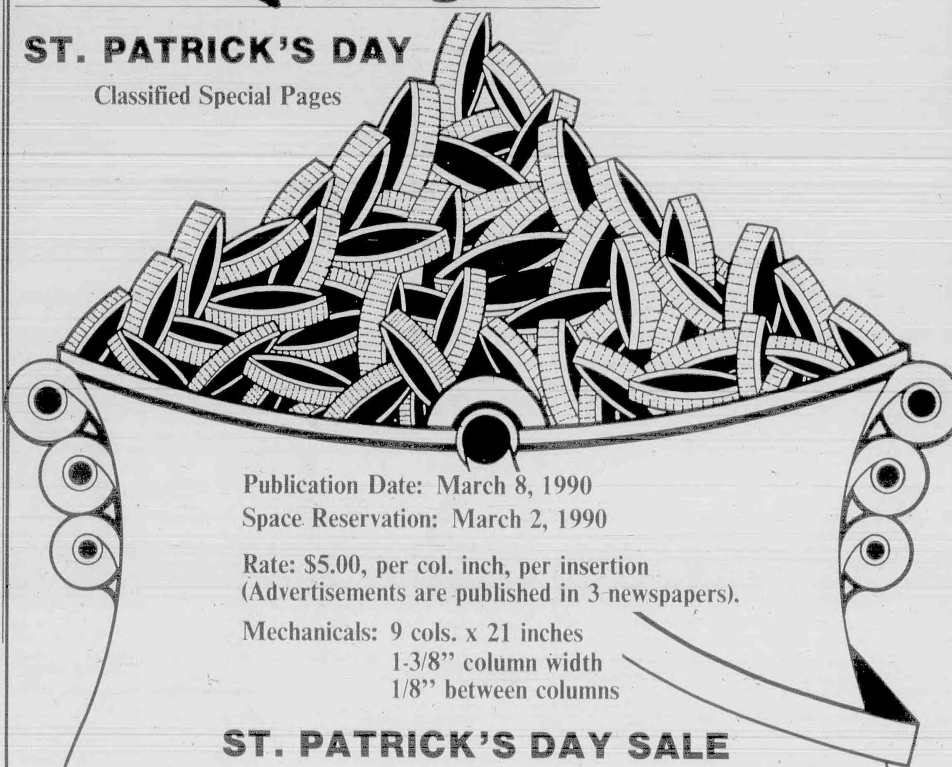
An experienced Ad-visor will explain rates, optional features and discounts.



What
Bargains!

ST. PATRICK'S DAY

Classified Special Pages



Publication Date: March 8, 1990

Space Reservation: March 2, 1990

Rate: \$5.00, per col. inch, per insertion
(Advertisements are published in 3 newspapers).

Mechanicals: 9 cols. x 21 inches
1-3/8" column width
1/8" between columns

ST. PATRICK'S DAY SALE

On March 8th

For the low rate of \$5.00, per column inch, per insertion, you can reach our \$392* MILLION MARKET — the 100% PAID CIRCULATION, where your advertising dollars work for you (our newspapers don't land on the lawns, nor in the trash; they're not blown away by the wind — they're delivered by the US MAIL and sold in over 125 newsstands).

So if you want to reach this powerful readership —
CALL NOW AND RESERVE YOUR SPACE!

201-667-3000

Classified Advertising Dept.

ORECHIO PUBLICATIONS & TV

The Nutley Sun — Belleville Times

& Bloomfield Life

800 Bloomfield Avenue

Nutley, New Jersey 07110

REACH THE READERSHIP
THAT CAN & DOES BUY!

Watch
Power 36

Join the Boy Scouts

Call 622-2488

9:00 AM - 4:30 PM

Monday through Friday

ARTICLES WANTED

Gun Collector
Lic #234
Wants to buy for cash:
"Quick" Swords "Daggers"
"Bayonets" "Especially"
Military Items
Call 783-6145

FM BUYING TOOLS
New "Used"
Any Type "Any Quantity"
Call "GENE"
696-4908 4-6 PM
7-9 weekdays
After 6:30 PM weekends.

LIONEL AND OTHER TRAINS
COLLECTOR
PAYS TOP PRICE
CALL 334-0709
635-2058

USED TV'S & VCR'S BOUGHT & SOLD
CALL 673-3845

FURNITURE

"Used" Dining Cabinets
"Chairs" "Dressers"
EDELSTEIN OFFICE
FURNITURE WISE
946 Market St.-Paterson
Cor.Lakeview Ave. R180
2 BR. 3 1/2 BATHS
335-4153

Contemporary LR
Broom, 3pc set. \$600. Oak
dinette set, pedestal table,
4 chairs. \$600. 5pc con-
temporary BR set. \$600.
All furniture brand new.
Prices neg. 338-5754

LEATHER ARM CHAIRS, ETC.

Reduced to \$35. HR Riser
\$25 667-7667

Moving house sale every-
thing must go! 67 Bel-
leville Ave. anytime at 1:30 751-6071

HOBBIES & CRAFTS

Entire Contents
2 Fairfax off Washington
Ct, Nutley, Sat & Sun,
Flt 7:15, 10:40pm.
2 BR, 3 AC, bar, items,
dolls, ceramic skill kiln,
w/df, refrig, 2 kit sets,
hummels, paragon/garden
tools, clocks, jewelry,
60 year old satin wedding
gown, etc.

CONDOS FOR SALE

A JOURNEY OF A 1000 MILES
Begins with one small
apartment. 600 sq. ft. in
smart condominium. Spic-
ious rooms includes
Living room, Dining
Room, 2 1/2 kitchens and
two great bedrooms. Also
has a beautiful private
balcony. Say goodbye to
your landlord, and move
right in. \$13,000

CENTURY 21 STANFORD AGENCY

235-9000
Each office is
independently owned and
operated

NUTLEY CONDO

• \$1500 DOWN
• \$763 MONTHLY
FOR 30 YEARS

Totally refurbished 1 br.
condo featuring central
air, kitchen, New
appliances, upgraded
bath, plush wall to wall
carpeting, balcony and
private swim club.

**To Qualified Buyer

\$1500 down payment
based on \$84,900 sales
price. Monthly P I
based on 360 month
mortgage term, \$83,400
repayment and 10.982%
A.P.R. terms subject to
change & mortgage
approval.

by prospectus only

402 River Rd. Unit 442A

SAT 12:30 PM
Call broker at 773-6262

CIRKUS

HOUSES FOR SALE

AFFORDABLE WATERFRONT

Three Bedroom, One
Bath Ranch with gas heat
on 50x100 bulkheaded lot
in Mystic Islands. \$79,900.
Call 1-609-296-3100
Bayside Agency

BELLEVILLE

FOR SALE BY OWNER

Custom built 1 family on
Bel/Nutley line

LR, DR, 3 1/2 BRS, tile
bath on 1st, LR, kit,
dining area, 2 BRS, tile
bath on 2nd. Full basement
incl. great room w/
fridge, kit w/laundry area.
Oak hardwood floors
throughout. Inlaid gas
heaters for each floor.
New roof in '88. Den, new
chairs, new chandeliers,
trans. private & public
schools.

Shown by appt. only
751-3699

JEWELRY

BLOOMFIELD JEWELERS

306 Glenwood Ave., Bloomfield, N.J. 07003
429-2211

Highest Cash Prices

PAID FOR OLD GOLD AND DIAMONDS
2018 HILLTOP RD. N.J.

HOUSES FOR SALE

BELLEVILLE

• TWO (13 RMS)
FAMILY •

LR, FDR, bth, 2 BR, 1/2
EIK on 1st & 2nd & 4 gar.
Bth & bth on 3rd & 4 gar.
sep heat, alkld \$189,500.
Apt Jim Dasso/REILLY
REALTORS/759-1682

Bloomfield 23 Rawson St.

Colonial LR w/frpce, DR,
natural trim, mod kit, 1 1/2
baths, 2 BRS, fin attic &
bent, pool w/patio & grill.
Move in cond. Only \$170.
By appointment.
429-8059

BLOOMFIELD -

By owner. Landlord!
Three bedrooms: 1 1/2
baths; Eat; Kitchen;
Living Room; Full
basement; Two car
detached Garage! Lot size
55 x 142. Excellent
transportation to NYC by
train & bus. Price
\$145,000. Call weekdays
9-5, 748-3600 Ext 19.
Sales Price \$145,000. Lot
size 55 x 142 LR.

BLOOMFIELD

Unfinished
New or 2 family, charm-
ing 1st & 2nd floor, 4
bath, 2 car, bath in
bent. Also 2 BRS & bath in
bent. CA, substantial
basement. From 2nd fl.
entr. Parking for 4 cars.
Inspection a must.
\$239,000.
Realtors Marie 429-7372

Mc Donald

BLOOMFIELD

• PRIDE OF
OWNERSHIP •
688 Bessida St. (off
Boulevard) Spacious 4
BDR, mod kit, fam rm,
1 1/2 bths, 3 BRS, fin
bath, 2 car, gar, new w/w,
H/W heat.
\$174,500.
Apt Jim Dasso/REILLY
REALTORS/759-1682

Cedar Run Honeycomb

Cottage!
Escape to Landlord!
A Home you can afford.
Move-In condition.
Stafford School district.
\$79,000.
Weichert Realtors
1-609-494-6000
Ask for Carol
Eves. 669-597-7700

FANTASY ISLAND

KITCHEN
Bring your cookbooks be-
cause gourmet cooking
comes natural in this to-
tally ceramic tile, large
eat-in kitchen. A real
cook's dream! These
serve your creations in
great style in formal dining
room. Additional features
are aluminum siding, 1 1/2
baths and more. This gem
is in excellent condition.
Belleville area for
only...\$135,000

CENTURY 21 STANFORD AGENCY

235-9000
Each office is
independently owned and
operated

LITTLE EGG HARBOR

TOWNSHIP
STYLISHLY COLONIAL
LIFESTYLES OF THE RICH
AND FAMOUS CAN BE YOURS.
On location, 2.5 bath.
\$124,500.
WEICHERT REALTORS
1-609-494-6000

NUTLEY NEW LISTING

EXP. CAPPE, Spacious Grdn
area, A-1 condition, 4
lot 3 BRS, lg mod kit, lg
rec rm. Space for 4th BR.
Call to see it today!

Call us on our many other homes in Nutley, Bloomfield & Belleville -

they're going fast!
RECORDS REALTY
3 High St, Nutley
667-5508

PENNSYLVANIA

Penns, 2 BR ranch on
4 acres & 3 separate rental
units. Commercially lo-
cated near Delaware
Water Gap. Close to all
trans. Must sell by owner.
Asking only \$325,000.
893-1160 or 893-1155.

STEAL THIS HOUSE!

SHORE RETREAT!
Owner transferred.
\$15,000 down, no points
or closing costs. 4br, 2ba,
Lantern, 20x40 pool, satel-
lite dish. \$199,000 bank
approved. Only \$150,000.
8 1/2% Assumable
mortgage.
1-609-597-4362

These share units

DISTRESS SELLERS
CHEAP! CHEAP!
World wide selections
Call Vacation Network
today.
1-800-826-7844 NATL
1-800-826-1847 in NJ or
1-305-771-6296

WEST CALDWELL - 3

BR, LR, DR, Den, New
kitchen & bath, full bath,
60 x 160. Near schools &
trans.
228-4432 226-6847

JEWELRY

APARTMENTS UNFURNISHED

BELLEVILLE

3 rms, 3rd fl, all util. incl.
\$375

3 mod rms, 2nd fl, H/W
incl \$650

3 1/2 mod rms, gard apt,
H/W & gas incl \$535

1 1/2 mod rms, gard apt,
H/W & gas incl \$505

4 lg rms, 1st fl, H/W
incl \$580.

5 mod rms, 1st fl, H/W
incl \$550

NEWARK/BELLEVILLE

LINKE
6 lg mod rms, 1st fl, sup
own util (Columbus Hosp
loop) \$700

METRO AGENCY

751-3400
BLOOMFIELD 4 large
rooms with yard.
\$650. + util.

284-1736 or 667-5489

BLOOMFIELD 2 1/2

fl rms 3 1/2 rms in 6500
all util incl. Cov. to GSP.
New York bus at door.
Call Susan 429-8444

BLOOMFIELD 4 rms,

A/C, W/D, H/W,
429-6630

BLOOMFIELD 3 rms

mod apt, 1 1/2 bath, A/C,
\$600 + util. April 1, 429-
9004 aft 4PM.

BLOOMFIELD

1 & 2 BR Garden Apts in
Brookdale. From \$380
incl heat & G/A.

6 rms (3BRS) in new 2

flm, W/W, C/A, \$950 +
util.

GLENWOOD REAL

ESTATE AGENCY
429-7380

Bloomfield - 6 rms, 2nd fl.

Available. Move-in-
cond. No pets. Call
680-4528 aft. 5:30 PM.

NO-NEWARK 4 rms, avail

now. Forest Hill near ten-
nis courts, 9PM-8527

NUTLEY

4 mod rms, \$775 h/w
BLOOMFIELD
3 mod rms, \$750 + util.
BELLVILLE
3rd Grdn, mod, 5004 h/w
1br Grdn, mod, \$610 h/w
5 rms, \$850 + util.
2br Condo, mod, \$900 +
MONTPELLIER AGENCY
759-6900

Nutley 1 BR, DR, DW,

W/W, 24 security. \$750.
667-4688

NUTLEY - 4 rms, 2 BRS,

LR, EIK, Laundry Rm.
Excel Cond. \$900, plus
util. Call Matt 667-1759

COM.BUS. RENTALS

BELLEVILLE-Store for
rent. Avail Mar 1, H/W
incl, newly dec.
Tony at 751-7417

INDUSTRIAL SPACE

FOR RENT
SUITABLE FOR LIGHT
MANUFACTURING.
194.50 SQ. FT. INCLUDES
OFFICE SPACE.
CALL 3 P.M.
AFTER 3 P.M.

BELLEVILLE-Store for

rent. Avail Mar 1, H/W
incl, newly dec.
Tony at 751-7417

INDUSTRIAL SPACE

FOR RENT
SUITABLE FOR LIGHT
MANUFACTURING.
194.50 SQ. FT. INCLUDES
OFFICE SPACE.
CALL 3 P.M.
AFTER 3 P.M.

BELLEVILLE-Store for

rent. Avail Mar 1, H/W
incl, newly dec.
Tony at 751-7417

INDUSTRIAL SPACE

FOR RENT
SUITABLE FOR LIGHT
MANUFACTURING.
194.50 SQ. FT. INCLUDES
OFFICE SPACE.
CALL 3 P.M.
AFTER 3 P.M.

BELLEVILLE-Store for

rent. Avail Mar 1, H/W
incl, newly dec.
Tony at 751-7417

INDUSTRIAL SPACE

FOR RENT
SUITABLE FOR LIGHT
MANUFACTURING.
194.50 SQ. FT. INCLUDES
OFFICE SPACE.
CALL 3 P.M.
AFTER 3 P.M.

BELLEVILLE-Store for

rent. Avail Mar 1, H/W
incl, newly dec.
Tony at 751-7417

INDUSTRIAL SPACE

FOR RENT
SUITABLE FOR LIGHT
MANUFACTURING.
194.50 SQ. FT. INCLUDES
OFFICE SPACE.
CALL 3 P.M.
AFTER 3 P.M.

BELLEVILLE-Store for

rent. Avail Mar 1, H/W
incl, newly dec.
Tony at 751-7417

INVESTMENT INCOME PROPERTIES

BELLEVILLE

3500 SQ FT
Bldg w/3 off, 1 1/2 bths,
storage, B/g gar, new roof
sale/lease. Reduced!
\$240,000.
Apt Jim Dasso/REILLY
REALTORS/759-1682

RES-COM LOTS

LOTS FOR SALE
POCONO MTS.
NO MONEY DOWN
Take over payments. Bank
repossessed lot. Wooded
vacation community.
Main extras. Call Tom
evenings
1 (717) 992-5414

APARTMENTS UNFURNISHED

Basement apt \$250.
759-3410

BELLEVILLE 1/2 & 4

1/2 lg rms mod rms w/
w/c carpeting. H/W & H/W
incl. Laundry facilities on
premises. Pkg space.
Call 759-8379

BELLEVILLE 5 1/2 rms,

1st fl. 2 of 2 fam house. \$625
+ util. Prof. couple pref.
Call 751-7496 aft 6PM.

BELLEVILLE 4 rms.

2 BRS. Brand new kitchen
& bth. \$700. H/W heat
supplied. 759-5830

BELLEVILLE 3 rms apt,

2nd fl. 2 of 2 fam house. \$625
+ util. Prof. couple pref.
Call 751-7496 aft 6PM.

BELLEVILLE 3 rms apt,

2nd fl. 2 of 2 fam house. \$625
+ util. Prof. couple pref.
Call 751-7496 aft 6PM.

BELLEVILLE 3 rms apt,

2nd fl. 2 of 2 fam house. \$625
+ util. Prof. couple pref.
Call 751-7496 aft 6PM.

BELLEVILLE 3 rms apt,

2nd fl. 2 of 2 fam house. \$625
+ util. Prof. couple pref.
Call 751-7496 aft 6PM.

BELLEVILLE 3 rms apt,

2nd fl. 2 of 2 fam house. \$625
+ util. Prof. couple pref.
Call 751-7496 aft 6PM.

BELLEVILLE 3 rms apt,

2nd fl. 2 of 2 fam house. \$625
+ util. Prof. couple pref.
Call 751-7496 aft 6PM.

BELLEVILLE 3 rms apt,

2nd fl. 2 of 2 fam house. \$625
+ util. Prof. couple pref.
Call 751-7496 aft 6PM.

BELLEVILLE 3 rms apt,

2nd fl. 2 of 2 fam house. \$625
+ util. Prof. couple pref.
Call 751-7496 aft 6PM.

BELLEVILLE 3 rms apt,

2nd fl. 2 of 2 fam house. \$625
+ util. Prof. couple pref.
Call 751-7496 aft 6PM.

BELLEVILLE 3 rms apt,

2nd fl. 2 of 2 fam house. \$625
+ util. Prof. couple pref.
Call 751-7496 aft 6PM.

BELLEVILLE 3 rms apt,

2nd fl. 2 of 2 fam house. \$625
+ util. Prof. couple pref.
Call 751-7496 aft 6PM.

BELLEVILLE 3 rms apt,

2nd fl. 2 of 2 fam house. \$625
+ util. Prof. couple pref.
Call 751-7496 aft 6PM.

BELLEVILLE 3 rms apt,

2nd fl. 2 of 2 fam house. \$625
+ util. Prof. couple pref.
Call 751-7496 aft 6PM.

BELLEVILLE 3 rms apt,

2nd fl. 2 of 2 fam house. \$625
+ util. Prof. couple pref.
Call 751-7496 aft 6PM.

BELLEVILLE 3 rms apt,

2nd fl. 2 of 2 fam house. \$625
+ util. Prof. couple pref.
Call 751-7496 aft 6PM.

BELLEVILLE 3 rms apt,

2nd fl. 2 of 2 fam house. \$625
+ util. Prof. couple pref.
Call 751-7496 aft 6PM.

BELLEVILLE 3 rms apt,

2nd fl. 2 of 2 fam house. \$625
+ util. Prof. couple pref.
Call 751-7496 aft 6PM.

BELLEVILLE 3 rms apt,

2nd fl. 2 of 2 fam house. \$625
+ util. Prof. couple pref.
Call 751-7496 aft 6PM.

BELLEVILLE 3 rms apt,

2nd fl. 2 of 2 fam house. \$625
+ util. Prof. couple pref.
Call 751-7496 aft 6PM.

BELLEVILLE 3 rms apt,

2nd fl. 2 of 2 fam house. \$625
+ util. Prof. couple pref.
Call 751-7496 aft 6PM.

BELLEVILLE 3 rms apt,

2nd fl. 2 of 2 fam house. \$625
+ util. Prof. couple pref.
Call 751-7496 aft 6PM.

BELLEVILLE 3 rms apt,

2nd fl. 2 of 2 fam house. \$625
+ util. Prof. couple pref.
Call 751-749

HOME BUYER'S

Guide

180 Centre St.
Nutley, N.J. 07110
667-3440

GEORGE E. MACMUNN CO.

REALTORS

100 Woodport Road
Sparta, N.J. 07871
729-8727



BELLEVILLE - JUST LISTED - BRICK construction. Dead-end St. above Franklin Ave. Big & Beautiful, 4 bedrooms, 1 1/2 baths, laundry on 1st fl., attached garage with extra parking, oversized lot. ASKING \$239,900.

**DO YOU KNOW
WHAT YOUR
HOUSE IS
WORTH
TODAY?**

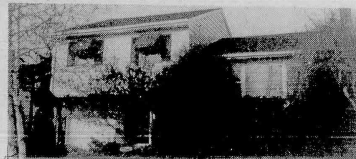
We offer a current market
value analysis...
Just pick up the phone & call.



SPARTA - JUST LISTED - over 12 acre level property in Lake community. Tastefully decorated, 4 bedrooms, 1 1/2 baths, patio. Great for kids. ASKING \$159,900.



SPARTA - 2 acre level property with inground pool & lovely distant views. Mature trees, stone fences & private prestigious dead-end road. 3 BR's, 2 baths, 2 Frp's, 2 car gar. ASKING \$239,900.



NUTLEY - Extra large split, 3 BR's, 1 1/2 baths, contemp. Fam. Rm. on main level & Rec. Rm. lower level, CA, dark rm., sprinkler system. PRICED AT \$215,000 for fast sale.



Quarter Century Club — pictured above, at a recent Board of Realtors meeting, are 25-year members of the board who were each given a pin in honor of their accomplishments. Pictured (bottom row, left to right) are: Lucietta Monteleone, President; Margie McDonald, Jeanne Elderkin Watson, Margaret Monaco, Past President. (Top row, from left: George T. Bowes, Joseph T. Baumgardner, Eugene J. Reilly, Norman H. Thompson, George B. Pifer, Lionel Bal and Richard Marashlian. Also recognized were: George E. MacMunn, Maria MacMunn, James Delisio (absent), Albert G. Fiore (absent), and Hugh F. Murphy (absent).

Nina Kaeser, Chairman of the Community Service Committee accepts a plaque on behalf of the Bloomfield, Glen Ridge, Belleville and Nutley Board of Realtors for second place in New Jersey American Home Week Community Service projects.

**The Nutley Sun
Belleville Times
Bloomfield Life**

Experience Shows

Hi, my name is Isabelle Cantupe. I am an experienced professional real estate person for the past five years. For all your buying or selling needs, call me at 667-0006 or just stop by.

Remember, experience is what counts and gets results.

DE PIRO

Realtors

366 Passaic Avenue
Nutley, New Jersey 07110 667-0006

CUT YOUR HOUSING COSTS

in half by sharing your home with someone you love, or with a friend. You'll have plenty of your own space in this 4 bedroom home, and you'll love the way this brother/sister team has altered the floor plan to give you company when you want it, and privacy when you need it! \$179,900.



628 Valley Road • Upper Montclair • NJ • 07043
201/746-5811 • Fax: 201/746-3157

**The Home
Front**

By Nina Kaeser



Did You Know??

You'll get more information when you apply for home equity loans and credit lines since tougher disclosure regulations went into effect last fall. Lenders must disclose more about their terms and fees.

Two advantages of today's multi-purpose spray lubricants: they displace moisture and they don't leave a greasy film to catch dirt.

Laundry day is easier with a chute that leads directly from a hamper near the bedroom area to the laundry room. Roll-out bin holds the clothes until laundry day.

If an electrical appliance runs for a while but then the fuse blows or circuit breaker trips, the electric circuit is overloaded. Unplug some of the other appliances on that circuit or check to be sure that the appliance you're trying to use is within amperage limits for that circuit.

Planning to move? Three months ahead is not too soon to start selecting a mover and deciding on a date. Get competing estimates, but make sure they're all based on the same services.

Planning to move? Let us help you find the home you'll be proud to move into. We're tops for service at Century 21 Stanford Agency, 86 Union Ave., Nutley. 235-9000.

REAL ESTATE FORUM

By Jim Farese

Q: I am currently trying to sell my house on my own. I have heard the importance of qualifying the buyers before I accept an offer. How could I do this?

A: The most common method used by most real estate companies and lending institutions is the 28/36 qualifying ratio. Here is an example: Say you are asking \$200,000 for your home and you find a buyer who is willing to pay that. You must find out what their downpayment will be and how much they earn first. For example, the buyers will be putting down 20% or \$40,000. The \$40,000 should be verifiable, including the money for closing costs and the first few payments.

Your buyers will be looking to qualify for a \$160,000 mortgage. Their total income is \$70,000 per year. The 28/36 ratio will work in this way. The total payment of principle, interest, tax and insurance can not be more than 28% of their monthly gross or 36% off their monthly net, after their fixed expense obligations, loan payments, credit cards, etc. Do not include living and housing expenses.

Now to complete our example: 28% of their monthly gross or \$70,000 ÷ 12 is \$5,833 x 28% = \$1,633. This figure is the maximum they will be permitted to spend. Secondly, deduct their monthly obligation from \$5,833 and multiply that by 36% and the resulting figure should also be greater than the proposed payment.

To find what the payment will be, you must find out what interest rate their bank will give them. It should range from 7% adjustable mortgage up to 10% fixed mortgage. Here is an abbreviated amortization table to use at 30 year terms. Multiply the dollar value times the mortgage amount per thousand. In our example, it would be 160.

7% - \$6.66; 8% - \$7.34; 9% - \$8.05; 10% - \$8.78.

So the payment of principle and interest for a \$160,000 mortgage at 9% for 30 years would be \$1,288. Now add on the real estate tax (monthly figure) and a monthly insurance amount and that will be the figure they must qualify for.

Q: What are your feelings on modular homes as far as quality, price and overall benefits or negatives?

A: I've had some experience in putting up modular homes in our area. I like them. The quality of construction is very good. Naturally, some companies are better than others, but overall they are made very well. I've been to the plants and have seen them assembled, in a dry, climate controlled supervised building. Average costs run about 30% less than on-site construction. However, if you hire a general contractor to do the foundation, grading and utilities plus set up and finishing of the home, much of the 30% could be cut into.

(Some of the questions may contain legal or accounting matters. Mr. Farese is not an attorney and advises you to consult the proper authority before any decision is made.)

Send your questions to:

Jim Farese
Century 21 A CV Real Estate
1170 Broad Street
Clifton, N.J. 07013

LARGE AND SMALL

SPRING GARDEN LARGE

9 room Colonial with central air conditioning, built-in pool, 2 1/2" deep yard. Asking \$249,500.

YANTACAW LARGE

Early American Colonial with 5 bedrooms, 2 1/2 baths, family room and rear porch overlooking park.

SMALL

Cozy 4 1/2 room starter home in prime condition. Living room with fireplace. Asking \$159,500.

SMALL

Small price for this updated 3 bedroom Colonial with new kitchen and baths.

EVERYONE KNOWS

GEORGE T. BOWES
YOUR NUTLEY REALTOR SINCE 1933
681 FRANKLIN AVE. NUTLEY 667-3376



ShopRite
Does It RIGHT!™

1/2 PRICE SALE

OVER 80 ITEMS On Sale At HALF PRICE

FINAL WEEK!



YOUR SCHOOL CAN RECEIVE FREE APPLE COMPUTERS
COURTESY OF ShopRite
RETURN YOUR YELLOW REGISTER TAPES TO YOUR LOCAL SCHOOL. THESE TAPES ARE VALID THRU SAT. FEB. 17, 1990.

1/2 PRICE

Flavor King Vanilla Flavored Ice Cream

ASSORTED FLAVORS

OR SHERBET

.99

CHOC. COVERED FUDGE STRIPS, PARTY GRAHAMS, STRIPED COOKIES, WAFFLES OR PEANUT BUTTER NUTTER

Nabisco Cookies 9-12/16 oz. pkg. **94**

REG. OR LOW SALT Keebler Club Crackers 1-lb. box **99**

STORE SLICED, IN THE APPY Wunderbar Bologna 1-lb. **79**

ShopRite Turkey Sliced, IN THE APPY, PETITE Turkey Breast 1-lb. **2.99**

CONTINENTAL PASTA, SW. POTATOES, PASTA MARINARA, PASTA SALAD, KIDULEES, WICHESSE OR POTAGES AU GRATIN

Birds Eye Classics 10-oz. pkg. **74**

LYNDEN FARMS Shoestring Potatoes 4-20-oz. pkgs. **99**

ASSORTED VARIETIES Vegetables 16-oz. bag **74**

OH BOY! WICHESSE OR CHIVE Stuffed Potatoes 12-oz. pkg. **64**

REGULAR OR BUTTERMILK Downyflake Waffles 12-oz. pkg. **79**

WHY PAY MORE?™ Hygrade's Hot Dogs 1-lb. pkg. **69**

THORN APPLE VALLEY Turkey Ham 1-lb. pkg. **1.44**

1/2 PRICE

Hi-Dri 15 Roll Bundle Pack

PAPER TOWELS

LESS THAN .34 PER ROLL

96-ct. sheets per roll

4.99

WHY PAY MORE?™ Red Rose Tea Bags 48-ct. box **74**

FFV REGAL GRAHMS, TANGO OR Striped Shortbread 7-10 oz. pkg. **69**

NESTLE Raisinets or Goobers 7-oz. bag **79**

CREME DE MENTHE Assorted Andes Mints 12-oz. bag **1.29**

ALL VAR. CONDITIONER OR Rave Shampoo 15-oz. bil. **99**

100% COTTON, ShopRite Cotton Swabs 400-ct. box **99**

ALL VAR. AEROSOL OR PUMP Rave Hair Spray 7-oz. can **74**

REG. OR EXTRA DRY SKIN Jergens Lotion 10-oz. bil. **1.34**

MINI FRESH Signal Mouthwash 24-oz. bil. **1.69**

AMERICAN ShopRite Singles 12-oz. pkg. **99**

ASST. VAR. REG. OR LIGHT La Yogurt 6-oz. conts. **2.00**

1/2 PRICE

Purex Laundry Detergent

HEAVY DUTY (1/2-GAL. 1.49)

CASE OF 3 GALS. 8.94

1-gal. bil. **2.98**

CASE OF 8 1/2-GALS. 8.94

ASSORTED VARIETIES H-O Instant Hot Cereal 10-pk. box **99**

RUBENSTEIN'S Pink Salmon 7 1/2-oz. can **99**

WHY PAY MORE?™ Purina Cat Chow 12-lb. bag **4.99**

WHY PAY MORE?™ Hefty Trash Bags 30-ct. box **1.99**

REG. SIZE A & B L'eggs Pantyhose 1-pr. pkg. **94**

ShopRite SM., MED. OR LG. Rubber Gloves 1/2-pr. pair **59**

SYLVANIA 30-100 OR 50-150 WATT 3-Way Light Bulbs 2-pk. **2.49**

POWER STRIP #201 O' Cedar Sponge Mop each **4.49**

BASKET STYLE Mr. Coffee Filters 200-ct. pkg. **1.09**

PRIME SOURCE OF VITAMIN 'K' Fresh Carrots 5-lb. bag **89**

JEWEL GREEN, 30 SIZE Kiwi Fruit 6-oz. can **99**

1/2 PRICE

Ssips 3 Pack Drinks

ASSORTED VARIETIES

CASE OF 9 3.96

25.35-oz. 1-w. pkg. **.44**

DELUXE FUDGE Pillsbury Brownie Mix 15-oz. box **74**

RALSTON HONEY Graham Chex 14-oz. box **1.24**

DRY DOG FOOD Come 'N Get It 40-lb. bag **9.99**

WHY PAY MORE?™ Glad Poly Wrap 200-ft. roll **1.44**

APPLE, COG, CUSTARD, PUMP OR LEMON MERINGUE Rittenhouse 10" Pies 38-40 oz. box **1.89**

MANISCHIEF SEEDED, UNSEEDED, PUMP OR SWIRL Rye Bread 16-oz. loaf **.69**

ShopRite 6-PACK English Muffins 12-oz. pkg. **.44**

ShopRite REG., KRINKLE OR NO SALT Potato Chips 11-oz. bag **.64**

IN FRESH BAKE SHOPPE (WHERE AVAILABLE) Corn Muffins 6-pk. 15-oz. 1-w. **.99**

HOLLY FARMS WHOLE OR HALF Roasted Chicken 1-lb. **1.19**

PERDUE DONE IT, CHICKEN Breast Nuggets 12-oz. pkg. **1.59**

Additional Savings In Every Aisle!

PLACE ORDER NOW! AVAIL. FEB. 11-14 TH LONG STEMMED

1-Dozen Red Roses

24.95

When Avail. While Supplies Last

AQUACULTURED, STORE SLICED Fresh Salmon Steak* 1-lb. **5.99**

FROZEN OR THAWED Orange Roughy Fillet 1-lb. **4.99**

REGULAR OR CALCIUM PLUS Citrus Hill Orange Juice 1/2-gal. conts. **2.30**

BUTTERMILK, COUNTRY STYLE OR TENDER LAYER Pillsbury Biscuits 7 1/2-oz. pkgs. **4.99**

WHY PAY MORE?™ Farm Flavor Apple Juice

1/2-gal. bil. **.89**

PLAIN OR FLAVORED 4C Bread Crumbs 1-lb. 8 oz. can **99**

ASST. GRINDS (EX. DECAF) SPECIAL ROAST Folgers Coffee 2-lb. 7 oz. can **4.99**

WHY PAY MORE?™ Bertolli Olive Oil 3-qt. 15 oz. can **8.99**

ELASTIC LEG SM. 66'S, MED. 44'S OR LG. 32'S ShopRite Diapers pkg. **5.99**

THOMPSON GREEN OR RED Imported Seedless Grapes

1-lb. **.99**

VITAMIN 'C' LARGE 88 SIZE Sunkist Navel Oranges 5 99

WASHINGTON STATE EXTRA FANCY Red Delicious Apples 100 SIZE 1-lb. **69**

FRESH CHICORY, ESCAROLE OR Romaine Lettuce 1-lb. **79**

VITAMINS 'A' & 'C' California Broccoli Rabe 1-lb. **99**

U.S.D.A. CHOICE Beef Shoulder London Broil

1-lb. **2.29**

U.S.D.A. CHOICE BEEF CHUCK Boneless Pot Roast 1-lb. **1.99**

ANY SIZE PKG., FRESH Holly Farms Chicken Thighs 1-lb. **79**

ANY SIZE PKG., WHOLE WITH BONES Holly Farms Chicken Legs 1-lb. **89**

ShopRite Fresh Turkey Breast Cutlets 1-lb. **3.49**

VALUABLE COUPON

WITH THIS COUPON

One Dozen Red Roses

21.95

Limit one. Good at any ShopRite. Sun. Feb. 11 thru Sat. Feb. 17, 1990.

ENTER **SAVE 3.00**

ShopRite Coupon

WITH THIS COUPON

Campbell's Home Cookin' Soups

.34

Limit one. Good at any ShopRite. Sun. Feb. 11 thru Sat. Feb. 17, 1990.

ENTER **SAVE .35**

ShopRite Coupon

WITH THIS COUPON

Reg. or Diet Coke or Sprite

.49

ASST. VAR. 2 LTR. BTL. PLUS DEP. WHERE REQ. Limit one. Good at any ShopRite. Sun. Feb. 11 thru Sat. Feb. 17, 1990.

ENTER **SAVE .50**

VALUABLE COUPON

WITH THIS COUPON

Victoriana Gravy Boat

8.99

Limit one. Good at any ShopRite. Sun. Feb. 11 thru Sat. Feb. 17, 1990.

ENTER **SAVE 1.00**